

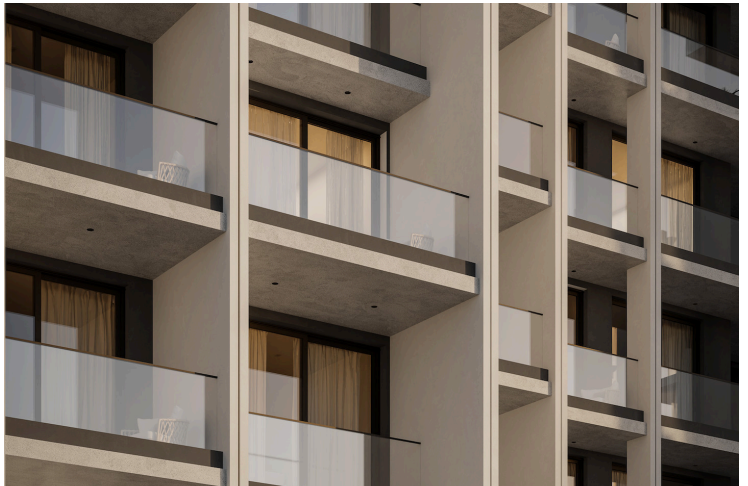
183335

TWO BEDROOM APARTMENT IN THE HEART OF LIMASSOL HISTORIC CENTER

 Limassol, City Center, Limassol

€445,000 +VAT





Overview

Specifications

Bedrooms

 2

Bathrooms

 2

Covered

 82 m²

Type

Apartment

Status

Off plan

Description

Two bedroom Apartment Limassol's Premier Investment Opportunity in the Historic City Center

Welcome to a landmark residential development set in the very heart of Limassol's historic center—just steps from Anexartisias Fashion Street and moments from the Old Port and Limassol Marina and just 600 meters distance to the seafront. This project redefines city living and presents what is arguably the most attractive real estate investment opportunity in central Limassol today.

The project comprising 70 contemporary studio, 1-, and 2-bedroom apartments, each unit has been intelligently designed to cater to the demands of today's urban lifestyle, offering functional layouts, modern aesthetics, and high-quality finishes and exceptional return on investment.

With direct proximity to top-tier amenities—including retail, fine dining, entertainment, and Limassol's most wellknown fashion street—The Collection is uniquely positioned to attract both local and international tenants, making it an ideal high-yield rental investment.

Residents enjoy exclusive access to an array of lifestyle facilities, including:

- Fully equipped gym
- Indoor and outdoor lounges
- Rooftop swimming pool
- Barbecue area and panoramic rooftop bar overlooking the Old Port and Marina

This is not just a place to live—it's a hub of connectivity, culture, and long-term value.

For investors seeking strong returns, capital appreciation, and a premium location in Cyprus' most dynamic city, The Collection stands out as a rare and unmissable opportunity.



Floor plans

Third Floor



Fourth Floor



Additional information

Facilities

Aircondition, Provision

Gym

Pool, Communal

Elevator

Heating, Provision

Solar water heater

Gated complex

Parking, Covered

Features

Barbeque

Door screen

Heart of city center

Rental potential

Bright

Double glazing

Near amenities

Veranda

City view

Easy access to main roads

Near bus route

Walking distance to beach

Distances

Amenities

 100 m

Airport

 60 km

Sea

 1 km

Public transport

 100 m

Schools

 200 m


Resort

 500 m

Contact us



Office Properties

 (+357) 25871010

 info@vivorealty.com.cy

