

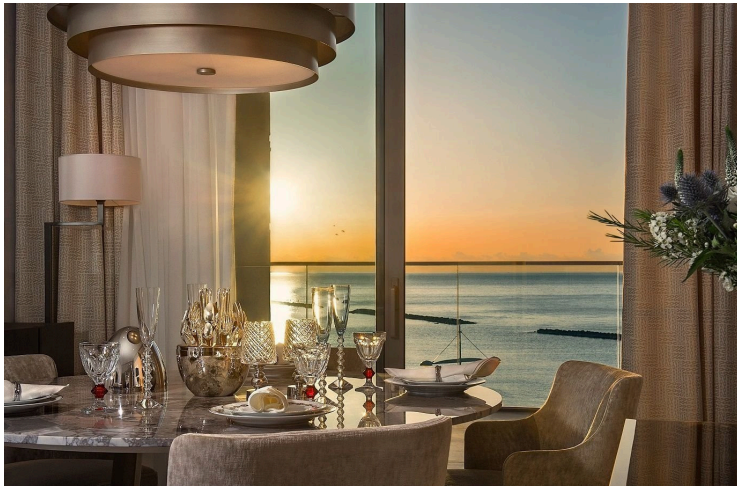
182380

MODERN ONE BEDROOM APARTMENT ON THE SEAFRONT

📍 Neapolis, Limassol

€740,000 +VAT





Overview

Specifications

Bedrooms



Covered

 57 m²

Type

Apartment

Status

Under construction

Structure

Concrete

Energy efficiency rating



Description

Modern luxury one bedroom apartment located on the seafront, in Neapoli area, in Limassol. Located on a building with large terraces extend the living room and main bedrooms, to celebrate the alfresco outdoor space of the undeniably enviable Cyprus climate.

Features include: Apartments of discerning taste, spectacular layouts, sea views, high standards of quality and design, member access to resident-only areas, 24-hour concierge and security, three dedicated elevators, private underground parking, swimming pool, pool bar, tennis court, children play area, spa, gym, landscaped gardens.

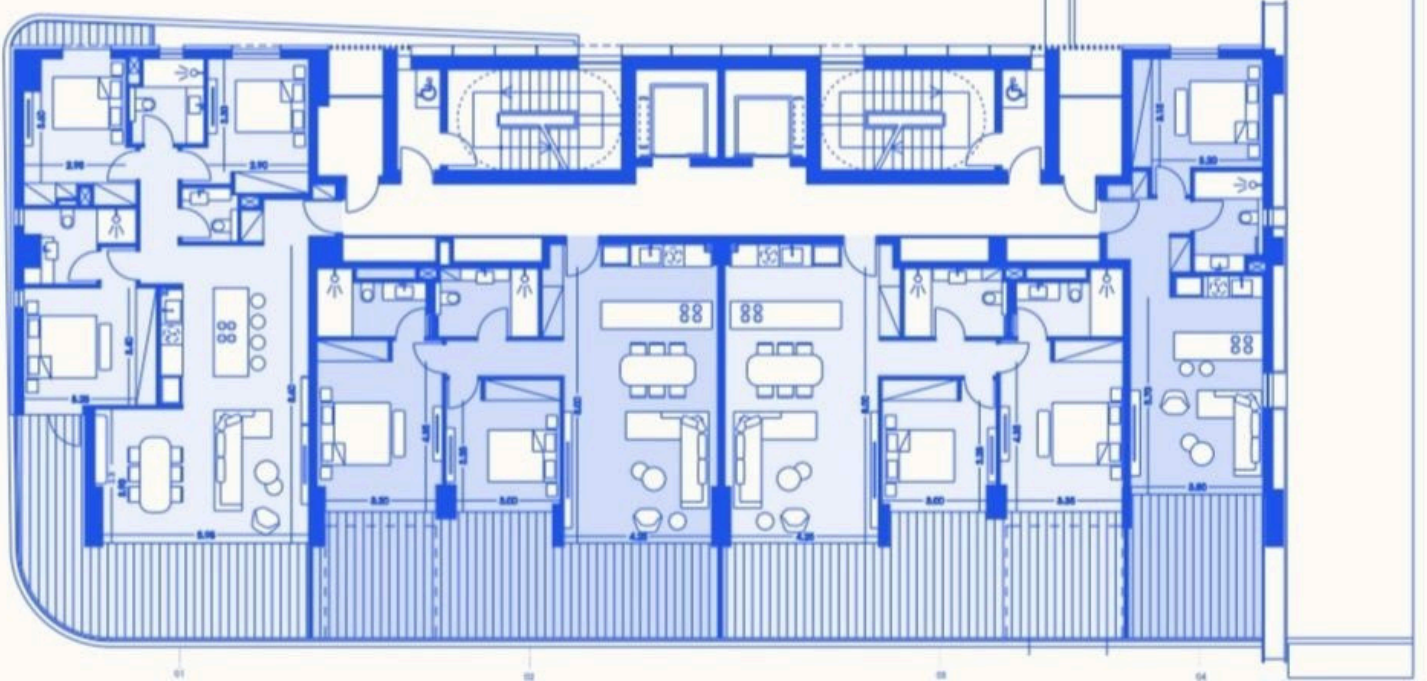
Enjoy high-end beachfront living, with the sophistication of urban cool, astonishing design flair as well as unsurpassed levels of finish.

Every interior design decision has been considered at length, resulting in exquisite choices that provide effortless delight. Tactile, indulgent and visceral, this futuristic residence thrills on every level.



Floor plans

Level 3



Additional information

Facilities

Aircondition, Split system

Gated complex

Indoor pool, Communal

Pool, Communal

Solar water heater

Tennis court

Childrens playground

Gym

Landscaped garden

Sauna

Spa

Elevator

Heating, Underfloor

Parking, Covered

Solar photovoltaic panels

Storage

Features

24-hour security

Ceramic tiles

Easy access to highway

Luxury specifications

Mountain view

Parquet flooring

Sea view

Veranda

Bright

City view

Easy access to main roads

Marble flooring

Near amenities

Pressurized water system

Smart home automation

Walking distance to beach

CCTV

Double glazing

Garden

Modern design

Panoramic view


Sea front

Thermal insulation

Contact us



Office Properties

 (+357) 25871010

 info@vivorealty.com.cy

