

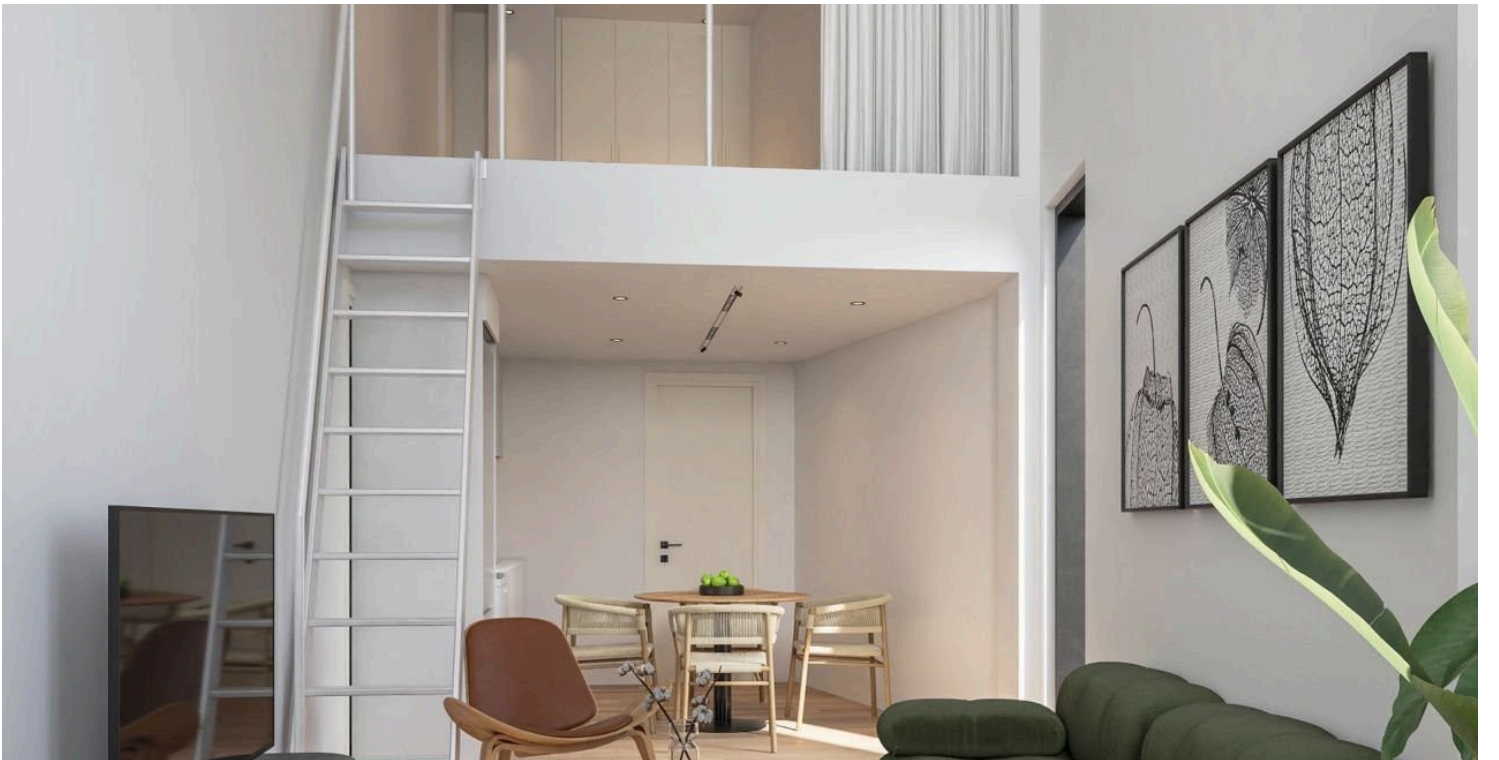
182060

# STUDIO APARTMENT IN HISTORICAL CENTRE

 Limassol, City Center, Limassol

**€198,000** +VAT





# Overview

## Specifications

Bedrooms

 **Studio**

Covered

 **35 m<sup>2</sup>**

Type

**Apartment**

Furnished

**Unfurnished**

Status

**Off plan**

Energy efficiency rating

 **A**

## Description

Studio apartment a premier investment opportunity located in the heart of Limassol's Historical Centre, unit tailored for contemporary living and strong rental demand.

Resident can stroll in the elegant streets of Limassol's charming seafront.

Optional private parking adds an extra layer of convenience for homeowners and tenants alike.

With a prime location, high ROI potential, and excellent rental yields, this residence is designed to attract both investors seeking lucrative returns and homebuyers looking for lifestyle and value.

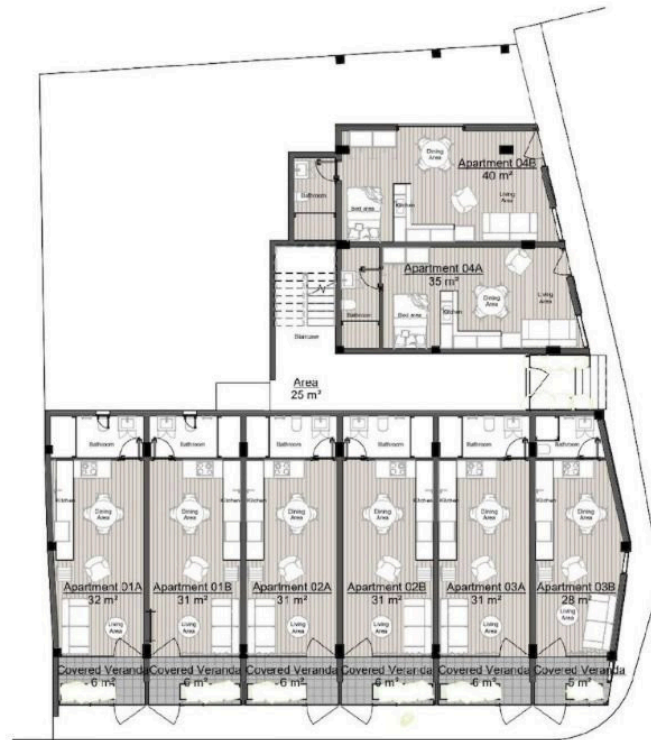
Nestled in Limassol's bustling Historical Centre, surrounded by markets, cafes and shops, the residence blends the city's rich cultural character with modern living.

This off-plan development combines contemporary comfort

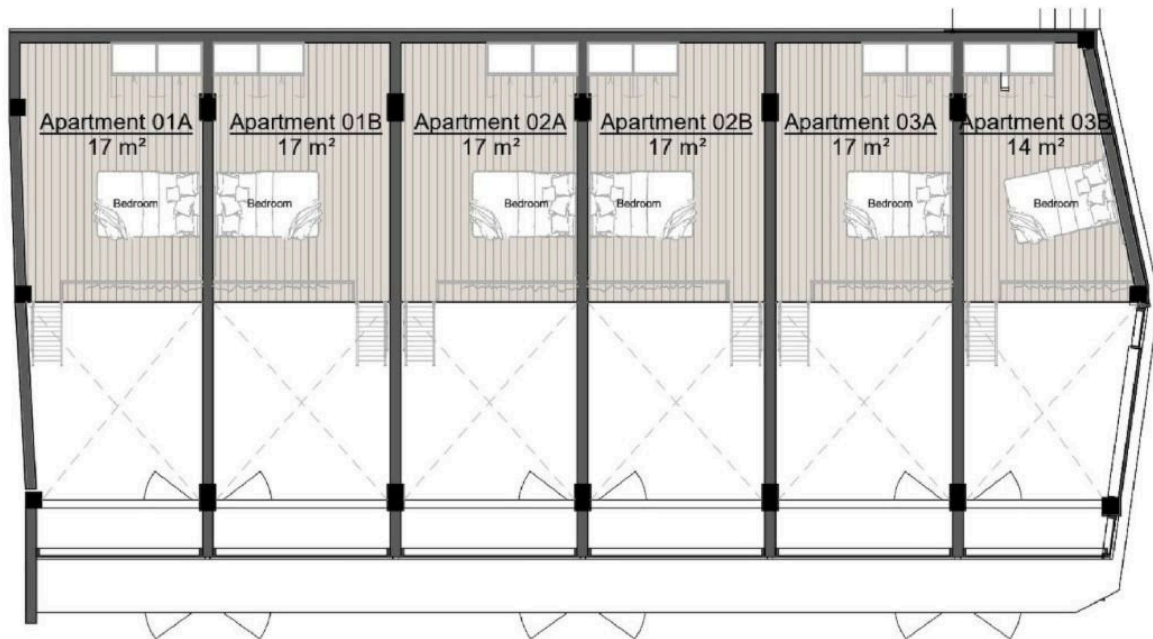


# Floor plans

## Ground Floor



## Mezzanine



# Additional information

## Facilities

Aircondition, Provision

Heating, Provision

Solar water heater

## Features

Bright

Double glazing

Easy access to main roads

Near amenities

Near bus route

Quiet area

Rental potential

Veranda

Walking distance to beach

## Distances

Amenities

 100 m

Airport

 60 km

Sea

 200 m

Public transport

 200 m

Schools

 300 m


Resort

 3 km

## Contact us



### Office Properties

 (+357) 25871010

 [info@vivorealty.com.cy](mailto:info@vivorealty.com.cy)

