

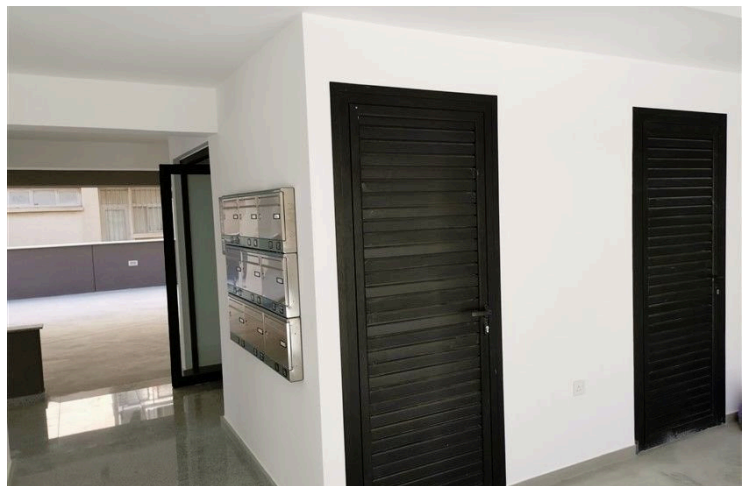
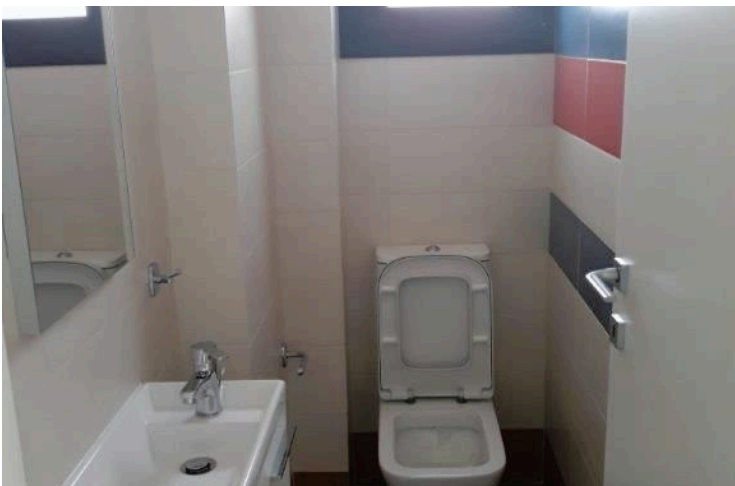
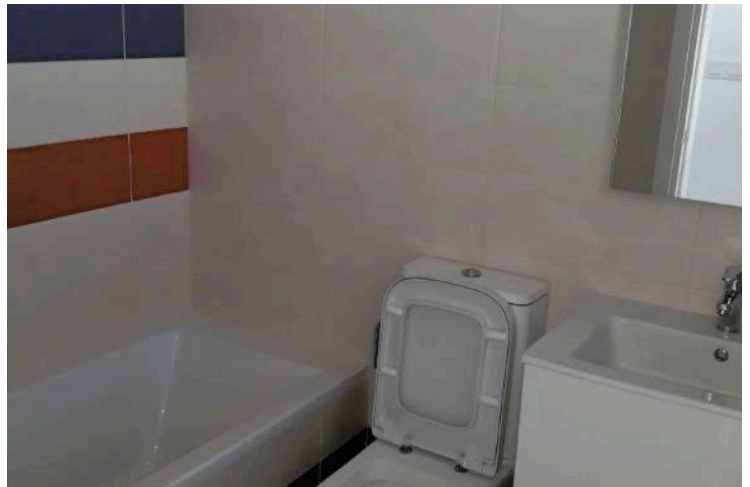
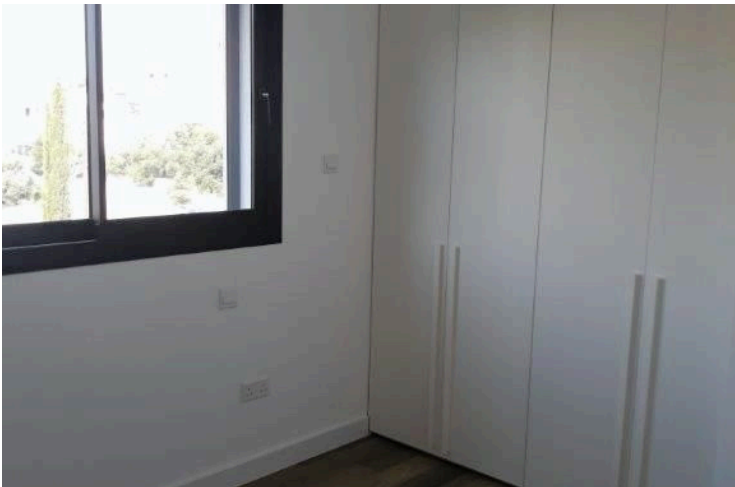
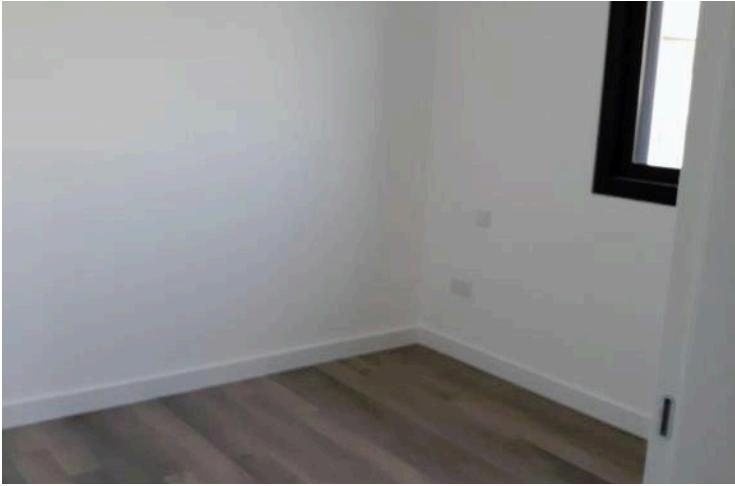
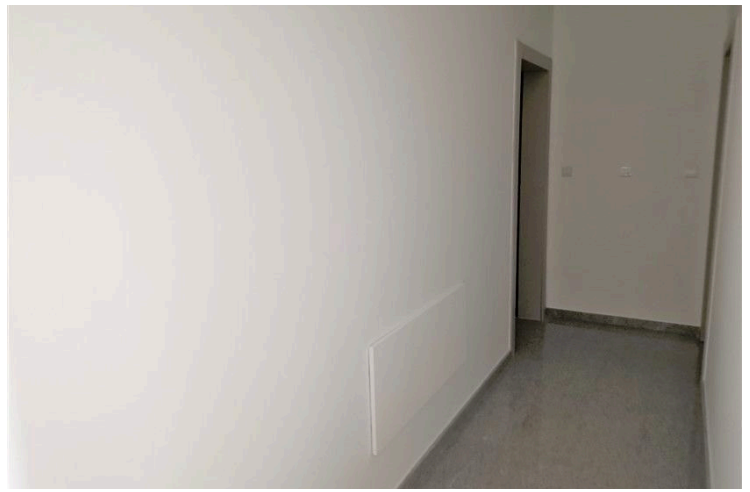
181547

NEW TWO BEDROOM APARTMENT IN PETROU & PAVLOU

 Petrou & Pavlou, Limassol

€1,750 /month





Overview

Specifications

Bedrooms



2

Covered

77 m²

Type	Apartment	Status	Key ready
Toilets	2	Furnished	Unfurnished

Description

A brand-new Apartment in building with 9 apartments, located in a quiet residential area in the center of town, close to ERA Apollon .

The Apartment consists of 2 bedrooms, main bathroom, guest toilet, kitchen, living and dining area, and two balconies. The apartment is fully with electrical appliances and fully Air conditioned. Also, has one parking place and one storage room on the ground floor.

The total covered area for the apartment is 77 sq. m and total covered verandas is 22 sq. m.

In price is included everything - common expenses, garbage fees, insurance, property taxes, and sewerage taxes.

Additional information

Facilities

Aircondition, Split system

Elevator

Parking, Covered

Features

Double glazing

Guest WC

Kitchen appliances

Near amenities

Veranda

Contact us



Office Properties

 (+357) 25871010

 info@vivorealty.com.cy