



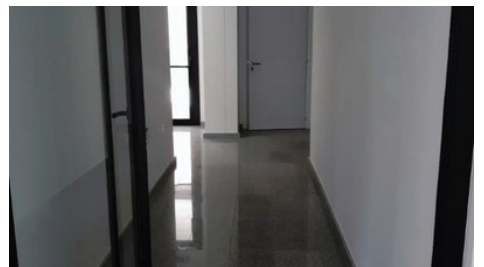
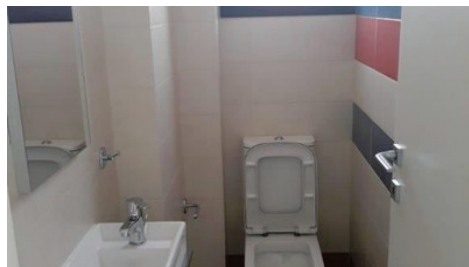
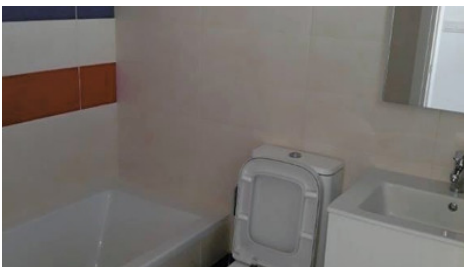
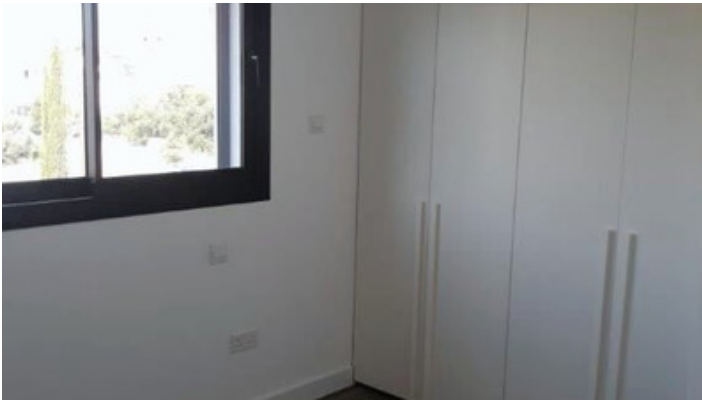
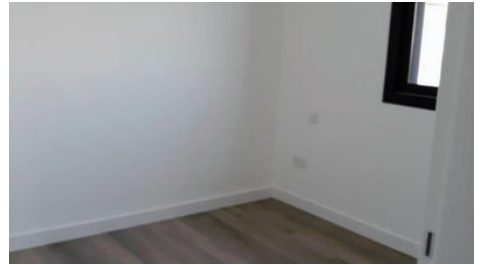
VIVO
REALTY



NEW TWO BEDROOM APARTMENT IN PETROU & PAVLOU

 [Limassol, Petrou & Pavlou](#)

181301



Rent	€1,750 /month	Type	Apartment
Bedrooms	2	Bathrooms	1
Covered	77 m ²	Covered veranda	22 m ²
Area	Limassol, Petrou & Pavlou		

Description

A brand-new Apartment in building with 9 apartments, located in a quiet residential area in the center of town, close to ERA Apollon .

The Apartment consists of 2 bedrooms, main bathroom, guest toilet, kitchen, living and dining area, and two balconies. The apartment is fully with electrical appliances and fully Air conditioned. Also, has one parking place and one storage room on the ground floor.

The total covered area for the apartment is 77 sq. m and total covered verandas is 22 sq. m.



Office Properties

Office Administrator

✉ info@vivorealty.com.cy

☎ (+357) 25871010

Facilities

Aircondition, Split system

Parking, Covered

Storage

Heating, Split system

Elevator

Solar water heater

Features

Easy access to main roads

Double glazing

Quiet Area

Near amenities

Bright

Guest WC

Near bus route

Kitchen appliances