

181251

# TWO BEDROOM TOP FLOOR APARTMENT WITH ROOF GARDEN IN COLUMBIA AREA

 Columbia Area, Limassol

**€479,000** +VAT







# Overview


## Specifications

Bedrooms

 2

Covered

 75 m<sup>2</sup>

Type	Apartment	Status	Under construction
Covered veranda	19 m <sup>2</sup>	Furnished	Unfurnished
Roof garden	65 m <sup>2</sup>	Energy efficiency rating	 A

## Description

The project located in Limassol's Columbia area, comprises eight apartments spread across a three-story building.

The apartments are available in one and two-bedroom layouts, catering to various lifestyle needs. Positioned near modern amenities such as shopping centers and restaurants, Residences offers convenience to its residents.

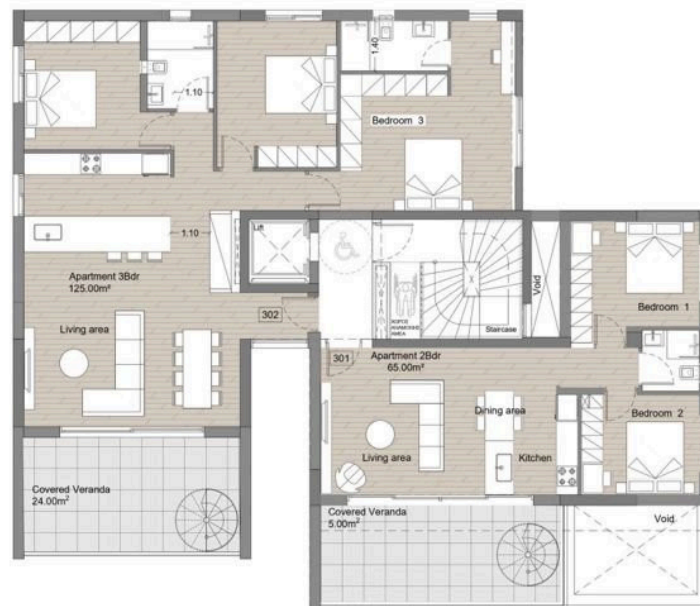
Each apartment is designed with a blend of contemporary architecture and practicality, providing comfortable living spaces. Whether enjoying the views from the balconies or accessing nearby facilities, residents can expect a balanced lifestyle at Residences.

With upscale residential developments and continued strong rental yields, Columbia presents an attractive investment opportunity in Limassol's thriving real estate market.

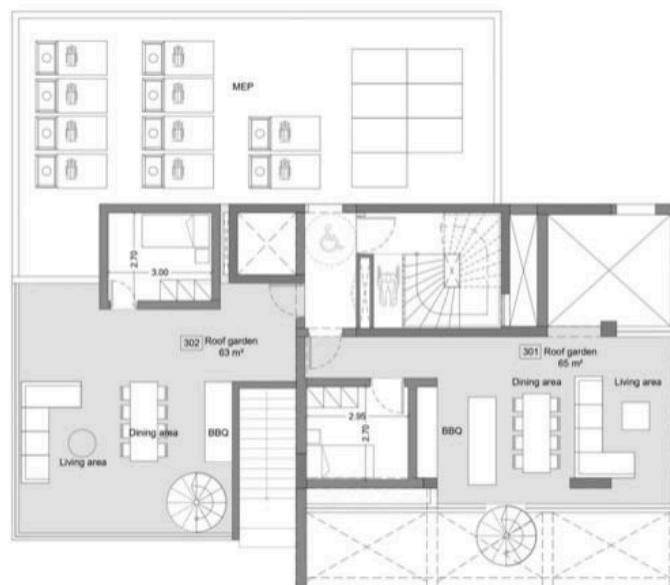


# Floor plans

## Third Floor



## Roof Garden



# Additional information

## Facilities

Aircondition, Provision

Elevator

Parking, Covered

Solar water heater

Storage

## Features

Bright

Double glazing

Easy access to highway

Easy access to main roads

Near amenities

Near bus route

Quiet area

Rental potential

Roof garden

Veranda

## Distances

Amenities



1 km

Airport



50 km

Sea



2 km

Public transport



1 km

Schools



1 km

Resort




1.8 km

## Contact us



**Office Properties**

 (+357) 25871010

 [info@vivorealty.com.cy](mailto:info@vivorealty.com.cy)