

181246

ONE BEDROOM TOP FLOOR APARTMENT WITH ROOF GARDEN IN COLUMBIA AREA

 Columbia Area, Limassol

€303,000 +VAT





Overview

Specifications

Bedrooms



1

Covered

50 m²

Type	Apartment	Status	Under construction
Uncovered veranda	11 m ²	Furnished	Unfurnished
Roof garden	29 m ²	Energy efficiency rating	A

Description

The project located in Limassol's Columbia area, comprises eight apartments spread across a three-story building.

The apartments are available in one and two-bedroom layouts, catering to various lifestyle needs. Positioned near modern amenities such as shopping centers and restaurants, Residences offers convenience to its residents.

Each apartment is designed with a blend of contemporary architecture and practicality, providing comfortable living spaces. Whether enjoying the views from the balconies or accessing nearby facilities, residents can expect a balanced lifestyle at Residences.

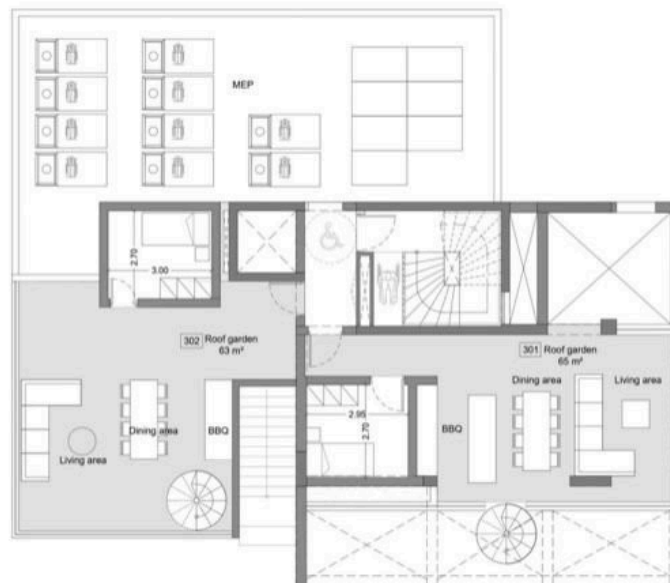
With upscale residential developments and continued strong rental yields, Columbia presents an attractive investment opportunity in Limassol's thriving real estate market.

Floor plans

Third Floor



Roof Garden



Additional information

Facilities

Aircondition, Provision

Elevator

Parking, Covered

Solar water heater

Storage

Features

Bright

Double glazing

Easy access to highway

Easy access to main roads

Near amenities

Near bus route

Rental potential

Roof garden

Veranda

Distances

Amenities



1 km

Airport



50 km

Sea



2 km

Public transport



1 km

Schools



1 km

Resort




1.8 km

Contact us



Office Properties

 (+357) 25871010

 info@vivorealty.com.cy