

181035

# MODERN ONE BEDROOM APARTMENT IN THE HEART OF PAREKKLISIA, LIMASSOL

 Pareklisia, Limassol

**€192,000** +VAT







# Overview

## Specifications

Bedrooms



1

Bathrooms



2

Covered



56 m<sup>2</sup>

Type

**Apartment**

Status

**Off plan**

Year of construction

**2024**

Furnished

**Unfurnished**

Energy efficiency rating



## Description

Modern one bedroom first floor apartment located in Pareklisia, Limassol.

It is a brand-new modern design development located in the heart of Pareklisia, close to all amenities, Supermarket, Pharmacy, schools just 1' minutes' walking distance drive to the highway and yet only 6' minutes' drive to the Mediterranean sea.

The development consists of 12 spacious apartments (one-two-three bedrooms).

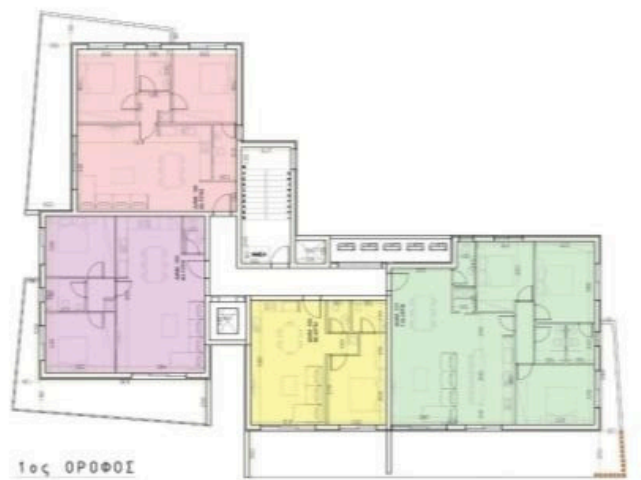
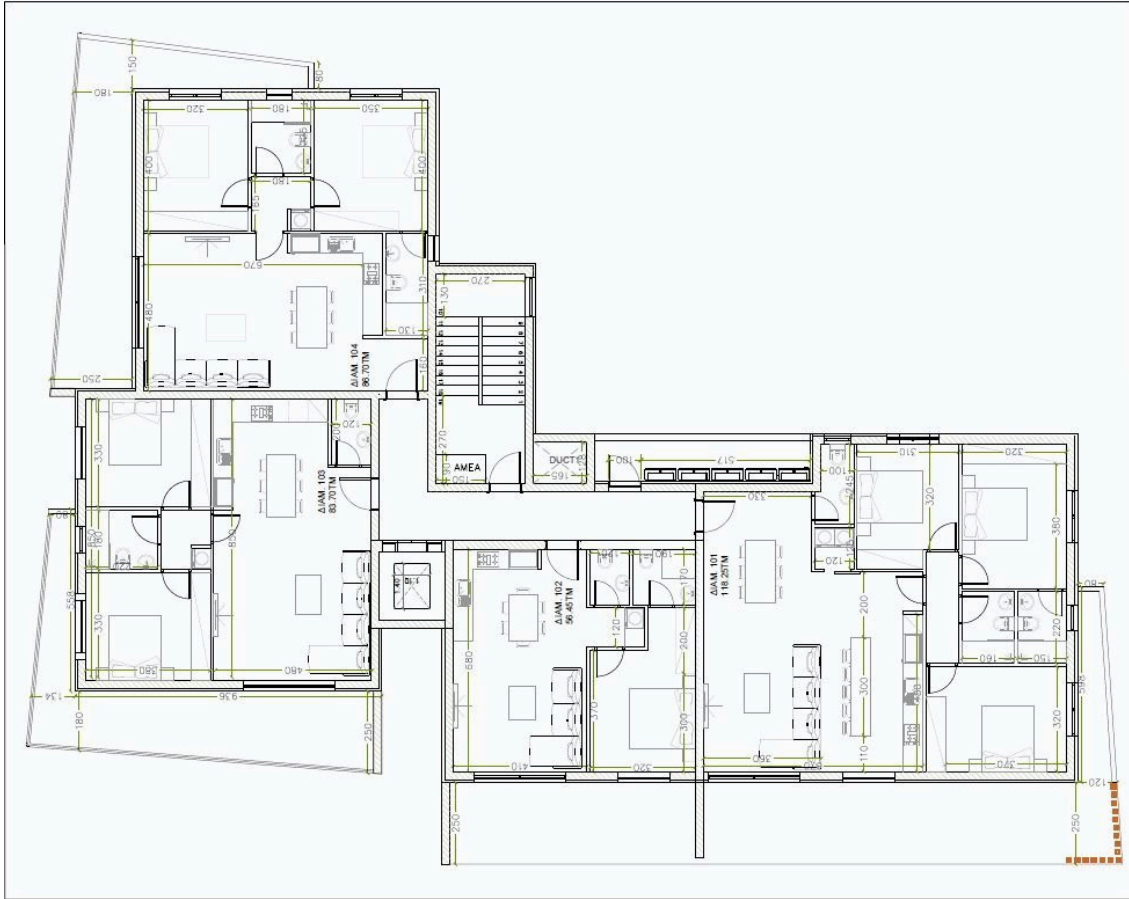
All apartments will be constructed to the highest standards using the latest techniques and the finest quality building materials with high-end finishes, climate control system, private covered parking area and storage room for each flat.

Property Features:

- . Close proximity to highway
- . Storage room
- . Guest toilet
- . Double glazed windows
- . Provision for flyscreen
- . Elevator
- . Mountain view
- . Quiet location
- . Covered Parking
- . Provision electrical shutters only in bedrooms
- . Provision alarm system
- . Electric heating provision
- . Air Condition provision



# Floor plans



# Additional information

## Facilities

Aircondition, Provision

Elevator

Heating, Provision

Parking, Covered

Storage

## Features

Alarm system (provision)

CCTV

Double glazing

Easy access to highway

Easy access to main roads

Guest WC

Modern design

Mountain view

Near amenities

Quiet area

Thermal insulation

Veranda

Village view

## Distances


Sea

 4 km

## Contact us



### Office Properties

 (+357) 25871010

 [info@vivorealty.com.cy](mailto:info@vivorealty.com.cy)