

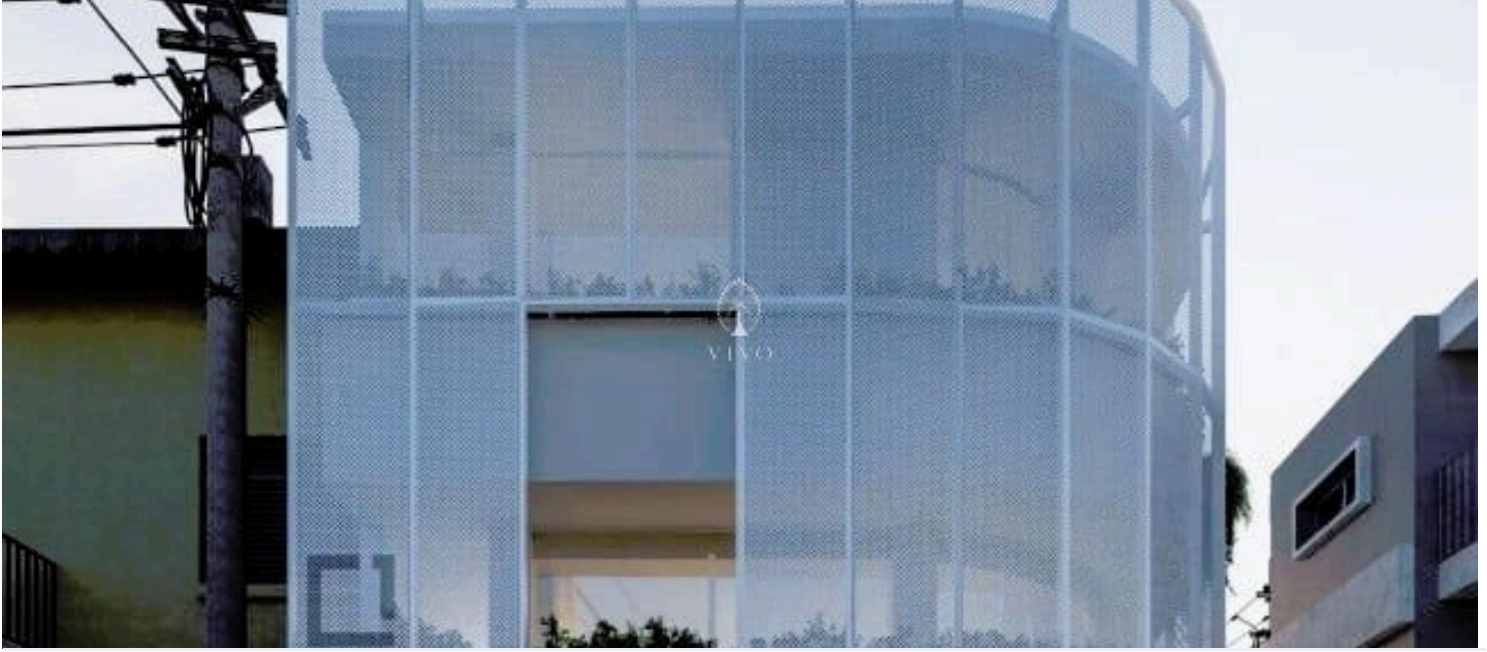
181013

MODERN RESIDENTIAL BUILDING FOR SALE IN THE HISTORIC AREA

📍 Limassol, City Center, Limassol

€1,270,000





Overview

Specifications

Bedrooms

 6

Bathrooms

 6

Covered

 308 m²

Type

Apartment Building

Status

Under construction

Year of construction

2023

Furnished

Unfurnished

Energy efficiency rating

 **A**

Description

A modern apartment building located in the heart of Limassol's historic old town With a total of 6 units

Located just a few minutes' walk from the main streets and key attractions in Limassol a central unbeatable location. and only a 700 meter distance from the sea, connectivity throughout the city and offering immense opportunities for commercial success.

Key-Benefits:

- Expected ROI = 10%
- Asset Belongs to SPV (Separate company thus / No VAT & Transfer Fees Applicable)
- Roof Garden

UNITS:

Flat 101 - 1bed - Total Area: 60sqm (duplex)

Flat 102 - 1bed - Total Area: 54sqm (duplex)

Flat 103 - 1bed - Total Area: 57sqm (duplex)

Additional information

Facilities

Aircondition, Split system

Solar water heater


Features

Bright	Combined kitchen and dining area	Connected to electric mains
Double glazing	Easy access to main roads	Granite countertops
Heart of city center	Laminate flooring	Luxury specifications
Modern design	Near amenities	Near bus route
Open plan	Pressurized water system	Rental potential
Roof garden	Thermal insulation	

Contact us



Office Properties

 (+357) 25871010

 info@vivorealty.com.cy