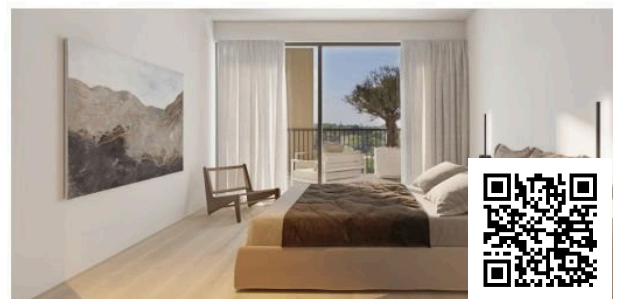
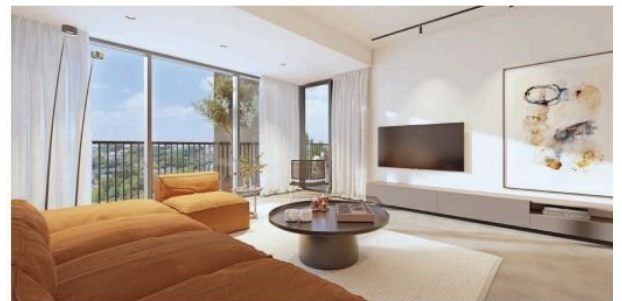


180648

CONTEMPORARY 1 BEDROOM APARTMENT IN LIMASSOL CITY CENTER

📍 Limassol, City Center, Limassol

€365,000 +VAT





Overview

Specifications

Bedrooms



1

Covered

51 m²

Type

Apartment

Status

Off plan

Furnished

Unfurnished

Structure

Concrete

Energy efficiency rating



Description

This fantastic brand new project exemplifies structural quality, modern design, elegant interiors and the latest technologies, all harmoniously balanced to resonate with those who value a vibrant urban lifestyle, just steps away from the city center's action.

Delivery date: November 2026



Floor plans

building B
Floors 1, 2, 3, 4, 5

B101
B201
B301
B401
B501

B106
B206
B306
B406
B506

B102
B202
B302
B402
B502

B103
B203
B303
B403
B503

B105
B205
B305
B405
B505

B104
B204
B304
B404
B504

A107
A207
A307



building A
Floors 1, 2, 3

A101
A201
A301

A102
A202
A302

A103
A203
A303

A104
A204
A304

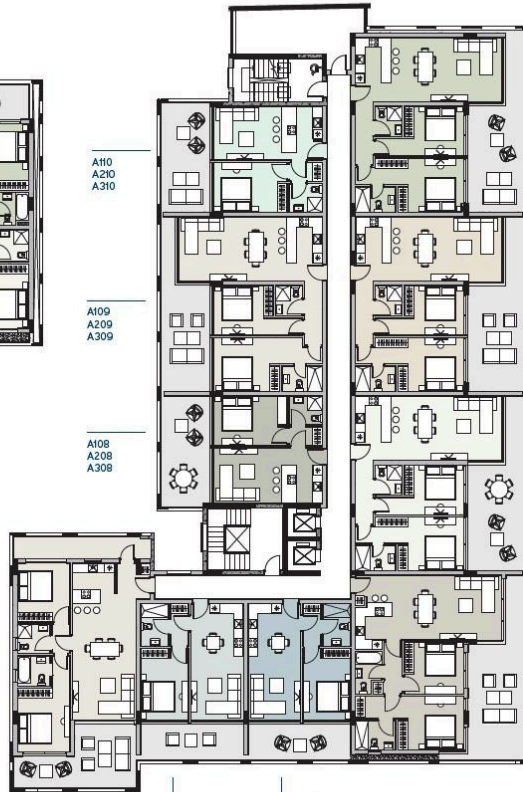
A110
A210
A310

A109
A209
A309

A108
A208
A308

A106
A206
A306

A105
A205
A305



NOTE:
In Building A, the terraces of apartments
on floor 1 differ from those on other floors.

CENTRO LIMASSOL

ground floor



- A** Pedestrian entrance
- B** Parking entrance / exit
- C** Building A entrance
- D** Building B entrance
- E** Disabled parking space
- F** Parking space
- G** Lift
- H** Staircase



Additional information

Facilities

Aircondition, Split system

Elevator

Heating, Underfloor

Parking, Covered

Solar photovoltaic panels

Solar water heater

Features

Central TV system

Ceramic tiles

Double glazing

Easy access to main roads

Heart of city center

Irrigation system

Luxury specifications

Marble flooring

Modern design

Near amenities

Near bus route

Parquet flooring

Quiet area


Rental potential

Thermal insulation

Contact us



Office Properties

 (+357) 25871010

 info@vivorealty.com.cy

