

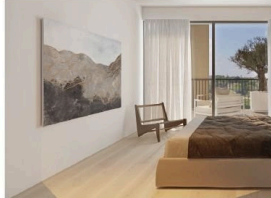
180629

CONTEMPORARY 1 BEDROOM APARTMENT IN THE HEART OF LIMASSOL

📍 Limassol, City Center, Limassol

€350,000 +VAT





Overview

Specifications

Bedrooms



Covered

 50 m²

Type

Apartment

Status

Off plan

Furnished

Unfurnished

Structure

Concrete

Energy efficiency rating



Description

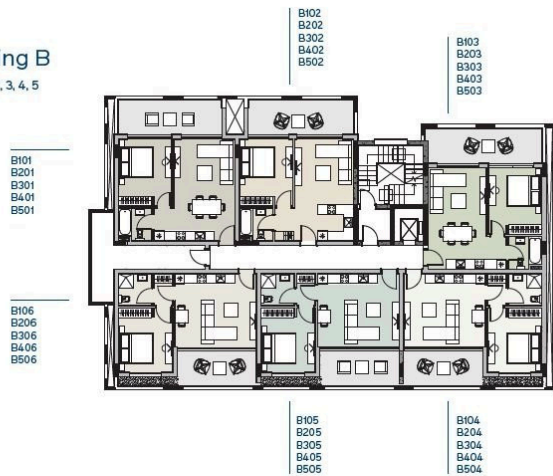
This fantastic brand new project exemplifies structural quality, modern design, elegant interiors and brand new technologies, all harmoniously balanced to resonate with those who value a vibrant urban lifestyle, just steps away from the city center's action.

Delivery date: November 2026

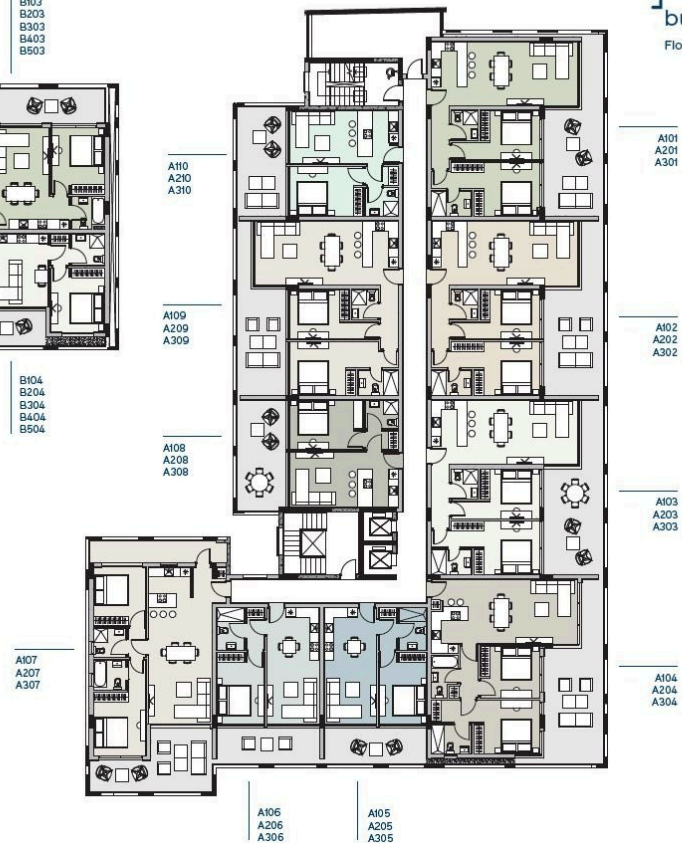


Floor plans

building B
Floors 1, 2, 3, 4, 5



building A
Floors 1, 2, 3



NOTE:
In Building A, the terraces of apartments
on floor 1 differ from those on other floors.

CENTRO LIMASSOL

ground floor



Additional information

Facilities

Aircondition, Split system

Elevator

Heating, Underfloor

Parking, Covered

Solar photovoltaic panels

Solar water heater

Features

CCTV (provision)

Central TV system

Ceramic tiles

Double glazing

Easy access to main roads

Heart of city center

Investment opportunity

Irrigation system

Kitchen appliances

Luxury specifications

Marble flooring

Modern design

Near amenities

Near bus route

Parquet flooring


Quiet area

Thermal insulation

Contact us



Office Properties

 (+357) 25871010

 info@vivorealty.com.cy

