

180368

WHOLE BUILDING OF 11 APARTMENTS FOR SALE IN THE KATO POLEMIDIA

 Kato Polemidia, Limassol

€2,949,000 +VAT





Overview

Specifications

Bedrooms

 18

Bathrooms

 18

Covered

 1113 m²

Type

Apartment Building

Status

Under construction

Furnished

Unfurnished

Description

Nestled in the heart of Limassol, the building stand as a testament to tranquil living amidst a bustling cityscape. Comprising of an elegant three-storey building, this residential block beckons with its attractive architecture, offering a haven of privacy and comfort to its residents.

A total of eleven apartments, thoughtfully designed to cater to the diverse needs of its occupants. Among them are four inviting 1-bedroom apartments and seven spacious 2-bedroom apartments, with the master bedrooms boasting ensuite bathrooms for added convenience.

Every unit within the building has been crafted with generous spaces and home comfort in mind. The open-plan kitchen, living room, and dining area create an inviting and airy ambiance, ideal for both relaxation and entertaining. Additionally, the apartments feature large verandas, extending the living space outdoors and allowing residents to savour Limassol's pleasant weather.

The residential block ensures that its residents' needs are catered to comprehensively. A private car park guarantees hassle-free parking, while private storage rooms on the ground floor offer ample space to stow away belongings. For those seeking moments of peaceful contemplation, a common roof garden awaits, providing a serene escape amidst nature's embrace.

The building strategic location seamlessly blends the best of both worlds. Situated just a few minutes' drive from the city centre, with immediate access to the island's highway network, residents enjoy ease of movement to all major cities. Yet, the serene surroundings create a calming suburban atmosphere, offering the perfect respite from the city's hustle and bustle.

Within proximity, residents are spoiled with everyday conveniences, such as a shopping centre, local school, ship management offices, and other major companies. The allure of Limassol Marina and the main commercial port, along with the city's popular mall and the renowned casino resort – City of Dreams Mediterranean, lies just a stone's throw

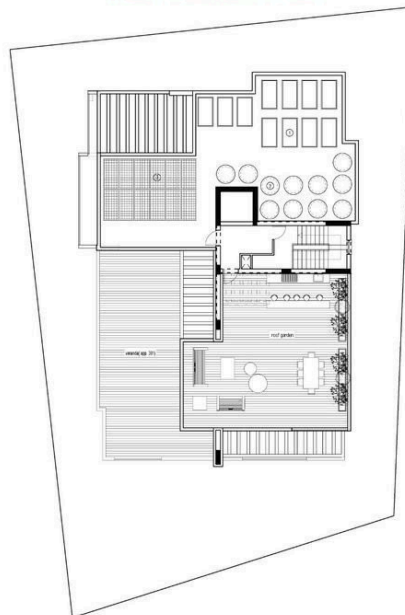


Floor plans

Second Floor Plan



Roof Garden Plan



Additional information

Facilities

Aircondition, Central system

Elevator

Heating, Central

Parking, Covered

Storage

Features

Bright

Ceramic tiles

Double glazing

Easy access to highway

Easy access to main roads

En suite bathroom

Entrance gate

Fitted wardrobes

Modern design

Near amenities

Near bus route

Next to green area


Roof garden

Veranda

Contact us



Office Properties

 (+357) 25871010

 info@vivorealty.com.cy

