

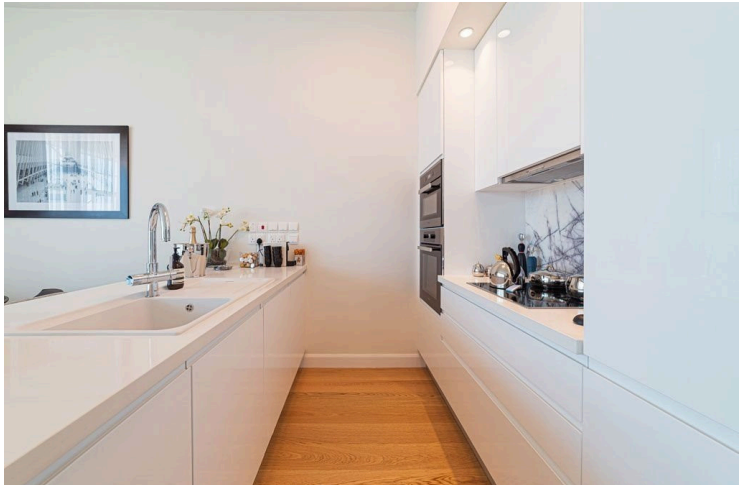
180207

LUXURY 1-BEDROOM APARTMENT IN POTAMOS GERMASOGEIAS AREA

 Potamos Germasogeias, Limassol

€426,000 +VAT





Overview

Specifications

Bedrooms



1

Covered

55 m²

Type	Apartment	Status	Under construction
Covered veranda	8.9 m ²	Furnished	Unfurnished
Uncovered veranda	0 m ²	Energy efficiency rating	A

Description

For sale a cozy one bedroom apartment located in one of the most popular areas of the city - Germasogeia, Limassol. The gated complex is designed using the best high-quality materials and high standards of finishing, where premium aesthetics are combined with increased comfort and functionality. The apartment offers panoramic mountain views, Residents will be able to enjoy the luxury of spacious living rooms with floor-to-ceiling windows that allow natural light to penetrate into the space, making the stay as comfortable as possible. Warm water floors, VRV-conditioning. The complex will have a communal swimming pool, gym and indoor parking for each apartment.

INTERIOR SPECIFICATION

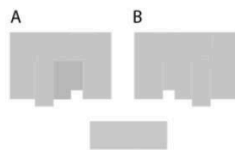
- . Semi-solid parquet floors in each room
- . Marble floor and walls in the toilets and bathrooms
- . High ceilings (3.15 m)
- . Security entrance doors
- . Intercom system
- . Under floor heating and central VRV conditioning
- . High-standard sanitary ware from European brands
- . Thermal aluminum window frames with double glazing
- . High-standard kitchen cabinets and wardrobes from European brands

Completion date: June 2026

Floor plans

block A

APARTMENT A203



master plan

ground floor



Additional information

Facilities

Aircondition, Split system

Gym

Pool, Communal

Elevator

Heating, Underfloor

Gated complex

Parking, Covered

Features

Bright

Easy access to highway

Luxury specifications

Near amenities

Veranda

City view

Easy access to main roads

Marble flooring

Semi-solid parquet flooring

Walking distance to beach

Double glazing

High ceilings

Modern design

Spacious rooms

Contact us



Office Properties

 (+357) 25871010

 info@vivorealty.com.cy