



VIVO
REALTY

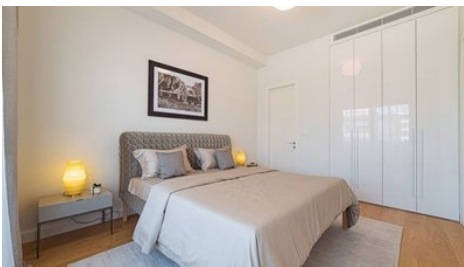


LUXURY 4-BEDROOM PENTHOUSE APARTMENT WITH PRIVATE POOL AND ROOF GARDEN IN POTAMOS GERMASOGEIAS AREA

[📍 Limassol, Potamos Germasogeias](#)

180205





Price	€1,340,000 +VAT	Type	Apartment
Bedrooms	4	Covered	128 m ²
Roof garden	96 m ²	Covered veranda	50 m ²
Uncovered veranda	0 m ²	Status	Off plan
Energy efficiency rating	A	Floor	Penthouse / 4
Area	Limassol, Potamos Germasogeias		

Description

For sale a cozy 4 bedroom penthouse apartment located in one of the most popular areas of the city - Germasogeia, Limassol. The gated complex is designed using the best high-quality materials and high standards of finishing, where premium aesthetics are combined with increased comfort and functionality. The apartment offers panoramic mountain views, Residents will be able to enjoy the luxury of spacious living rooms with floor-to-ceiling windows that allow natural light to penetrate into the space, making the stay as comfortable as possible. Warm water floors, VRV-conditioning. The complex will have a communal swimming pool, gym and indoor parking for each apartment. The apartment has its own private swimming pool and roof garden as well.

INTERIOR SPECIFICATION

- . Semi-solid parquet floors in each room
- . Marble floor and walls in the toilets and bathrooms
- . High ceilings (3.15 m)
- . Security entrance doors
- . Intercom system
- . Under floor heating and central VRV conditioning
- . High-standard sanitary ware from European brands
- . Thermal aluminum window frames with double glazing
- . High-standard kitchen cabinets and wardrobes from European brands

Completion date: June 2026



Office Properties

Office Administrator

✉ info@vivorealty.com.cy

☎ (+357) 25871010

Facilities

Aircondition, Split system

Parking, Covered

Elevator

Gated complex

Heating, Underfloor

Pool, Private

Gym

Features

Easy access to main roads

Spacious rooms

Bright

Semi-solid parquet flooring

Veranda

Luxury specifications

Walking distance to beach

Roof Garden

Easy access to highway

High ceilings

City view

Double glazing

Marble flooring

Modern design

Near amenities

Floor plans

• master plan

ground floor



• block a

floor 4



roof garden

