

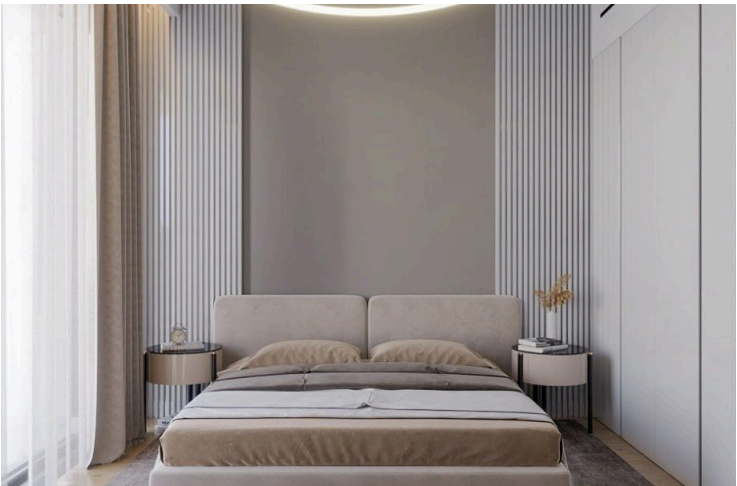
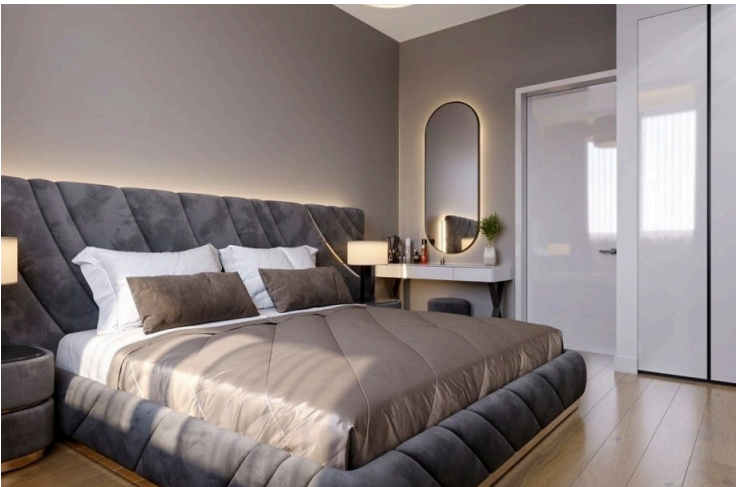
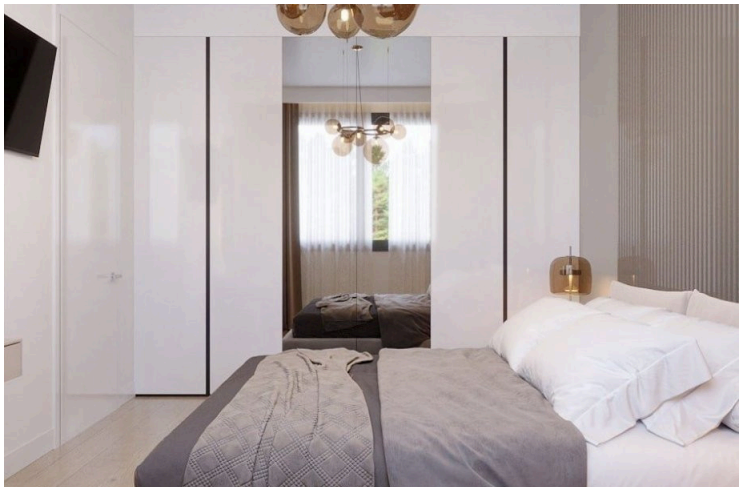
179820

2-BEDROOM APARTMENT WITH MOUNTAIN AND CITY VIEW IN LIMASSOL TOURIST AREA

 Potamos Germasogeias, Limassol

€870,000 +VAT





Overview

Specifications

Bedrooms

 2

Bathrooms

 2

Covered

 110 m²

Type

Apartment

Status

Under construction

Furnished

Unfurnished

Energy efficiency rating

 **A**

Description

Two bedroom apartment within a contemporary residential project in Potamos Germasogeia tourist area of Limassol, just 600 meters from the beach. It is conveniently located within walking distance to all necessary city amenities, yet tucked away from the hustle and bustle of the seafront road.

The common facilities include a swimming pool, barbecue area, covered and uncovered parking areas, storage area, an electric vehicle charging point and green areas.

The complex benefits from secure gated entrance and video intercom entry system to all units. The apartment has a storage room and a parking space.

Major advantages:

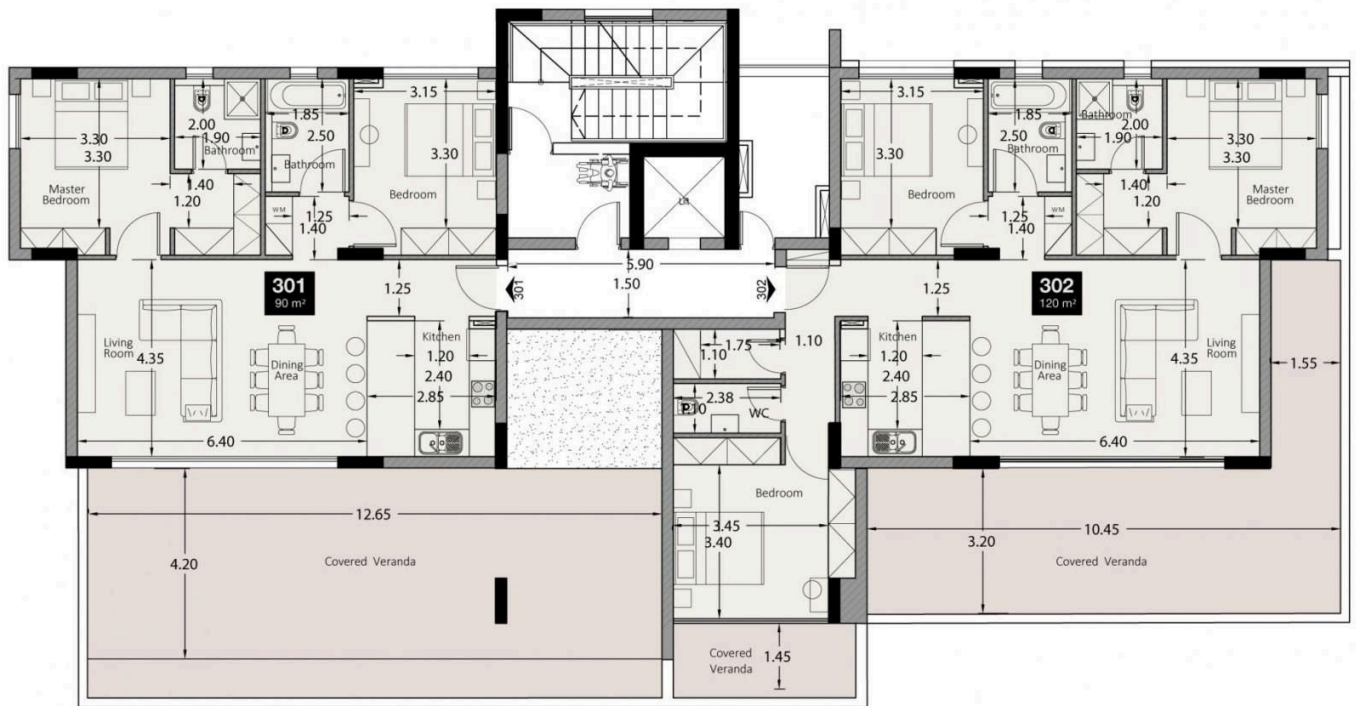
- . Walking distance to city's amenities and the beach
- . Gated entrance to the complex
- . Common swimming pool
- . Electric vehicle charging point
- . Photovoltaic electricity producing system
- . Built-in wardrobes and kitchens (manufactured in Italy)
- . VRV air conditioning system
- . Underfloor water heating system
- . Security fireproof entrance doors
- . Aluminum double glazed windows of a high thermal and sound insulation

Features:

- . Parking
- . Air conditioning



Floor plans



Additional information

Facilities

Pool, Communal

Storage

Features

Bright

City view

Combined kitchen and dining area

Double glazing

Easy access to highway

Easy access to main roads

Modern design

Mountain view

Near amenities

Open plan

Thermal insulation


Veranda

Walking distance to beach

Contact us



Office Properties

 (+357) 25871010

 info@vivorealty.com.cy

