



VIVO
REALTY

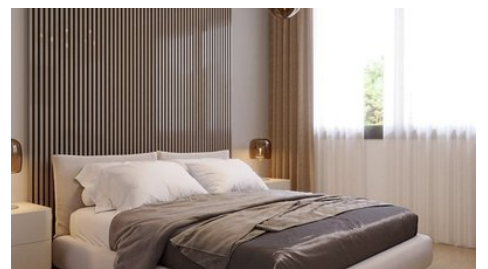
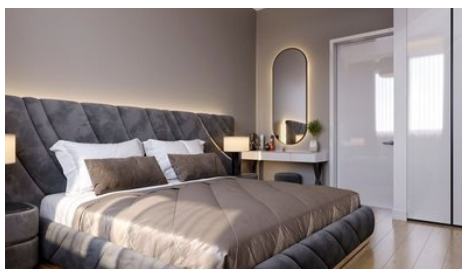
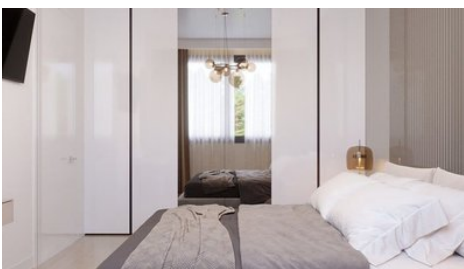


2-BEDROOM APARTMENT WITH MOUNTAIN AND CITY VIEW AT POTAMOS GERMASOGEIA AREA

📍 Limassol, Potamos Germasogeias

179813





Price	€585,000 +VAT	Type	Apartment
Bedrooms	2	Bathrooms	2
Covered	89 m ²	Covered veranda	41 m ²
Status	Off plan	Energy efficiency rating	A
Floor	1 / 5	Area	Limassol, Potamos Germasogeias

Description

A 2 bedroom apartment within a contemporary residential project in Potamos Germasogeia tourist area of Limassol, just 600 meters from the beach. It is conveniently located within walking distance to all necessary city amenities, yet tucked away from the hustle and bustle of the seafront road.

The common facilities include a swimming pool, barbecue area, covered and uncovered parking areas, storage area, an electric vehicle charging point and green areas.

The complex benefits from secure gated entrance and video intercom entry system to all units. The apartment has a storage room and a parking space.

Major advantages:

- . Walking distance to city's amenities and the beach
- . Gated entrance to the complex
- . Common swimming pool
- . Electric vehicle charging point
- . Photovoltaic electricity producing system
- . Built-in wardrobes and kitchens (manufactured in Italy)
- . VRV air conditioning system
- . Underfloor water heating system
- . Security fireproof entrance doors
- . Aluminum double glazed windows of a high thermal and sound insulation

Features:

- . Parking
- . Air conditioning
- . Under floor heating
- . Common garden
- . Storage
- . Common swimming pool
- . Gated complex
- . Intercom system

Estimated Completion: Dec 2024



vivorealty.com.cy



Office Properties

Office Administrator

✉ info@vivorealty.com.cy

☎ (+357) 25871010

Facilities

Pool, Communal

Storage

Features

Thermal insulation

Easy access to highway

Bright

Open plan

Double glazing

Modern design

Near amenities

Easy access to main roads

Combined kitchen and dining area

City view

Mountain view

Veranda

Walking distance to beach

Floor plans

