

179733

# 2-BEDROOM APARTMENT WITH PANORAMIC VIEW OF THE SEA AND CITYSCAPES OF PAPHOS!

 Paphos-City Center, Paphos

**€350,000** +VAT







# Overview

## Specifications

Bedrooms

 3

Bathrooms

 2

Covered

 106 m<sup>2</sup>

Type

**Apartment**

Status

**Under construction**

Furnished

**Unfurnished**

## Description

This 2-bedroom apartment has spacious bedrooms, living room and open plan kitchen, as well as mesmerizing panoramic views of the sea and cityscapes!

It is built at a park of 32000m<sup>2</sup> in the center of Paphos and is comprising of sporting grounds, a children's playground and a botanical garden, a cafeteria, a basketball court, a small football court, locker rooms, a climbing wall, a skate-park and an outdoor exhibition space.

It has custom made kitchen cupboards of high quality, provision for cooker, re-circulation hood, washing machine and refrigerator (appliances included) and custom made floor to ceiling wardrobes.

PRICE INCLUDES: Concealed A/C system in Living Areas, split units A/C provision in other areas, Intercom, provision for Security System, provision for Central Heating

Also can have central heating, CCTV/alarm system, smart house (lights, curtains, thermostat), concealed A/C, furnished and store room but it will cost some extra charge.

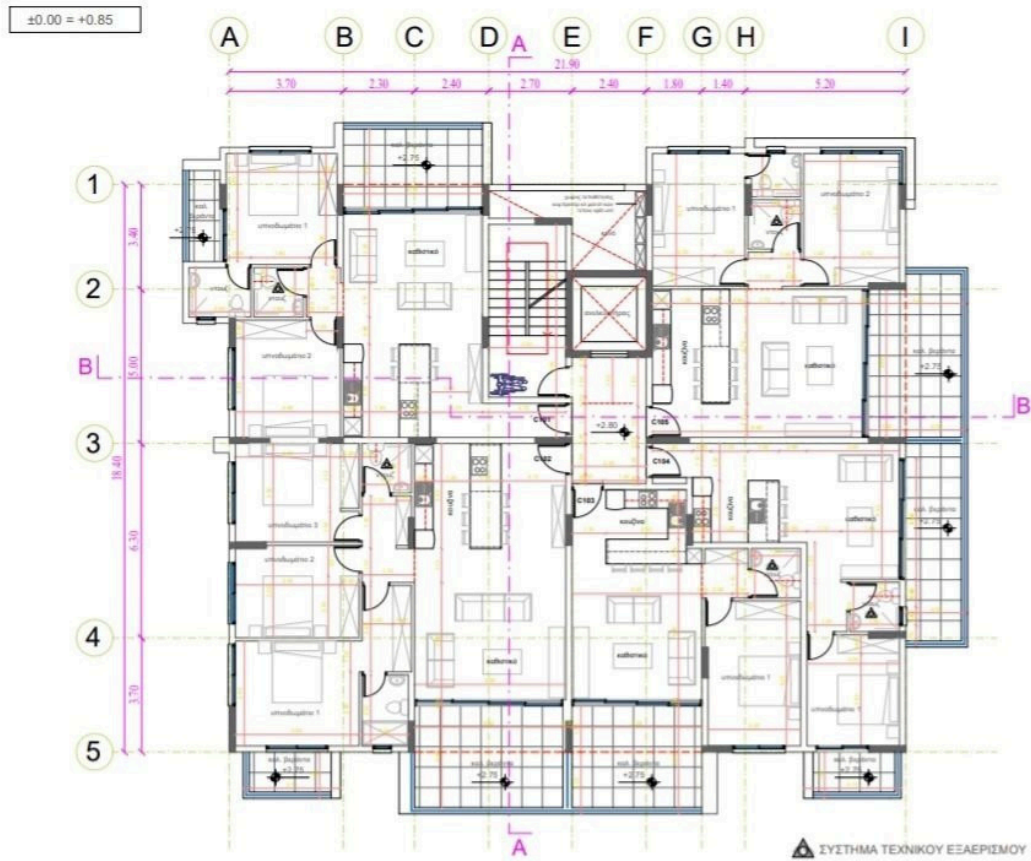
Key transport:

- . City Center: 0km
- . Airport: 10km
- . Supermarket: 100m
- . Sea / Beach: 3km
- . School: 100m
- . Restaurant: 200m
- . Golf Courses: 5km

Completion Date: JUNE 2025



# Floor plans



# Additional information

## Facilities

Aircondition, Split system

Elevator

Heating, Provision

Indoor pool, Communal, heated

Parking, Uncovered

Sauna

## Features

Alarm system (provision)

Bath

Bright

City view

Combined kitchen and dining area

Country view

Double glazing

Easy access to highway

Easy access to main roads

Elevated

Entrance gate

Heart of city center

High ceilings

Luxury specifications

Modern design

Near amenities

Next to green area

Panoramic view

Parquet flooring

Sea view

Sound insulation

Spacious rooms

Thermal insulation

Veranda

## Distances

Airport



10 km

Sea




3 km

## Contact us



### Office Properties

 (+357) 25871010

 [info@vivorealty.com.cy](mailto:info@vivorealty.com.cy)