

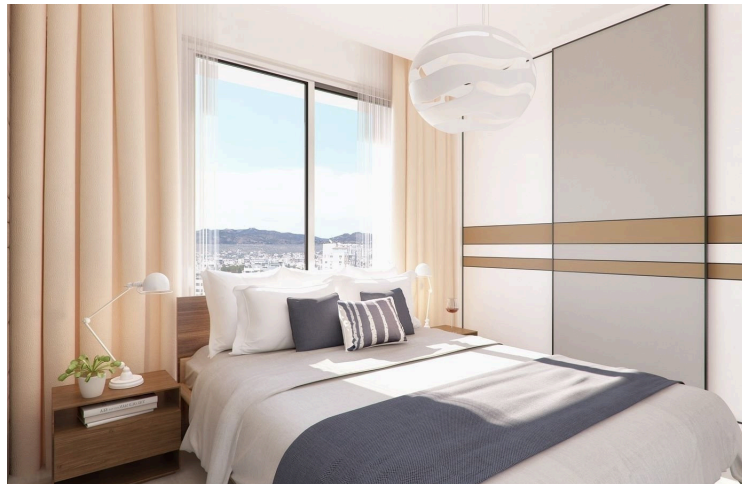
179668

2-BEDROOM APARTMENT ON THE 2ND FLOOR IN KATO POLEMIDIA

 Kato Polemidia, Limassol

€297,000 +VAT





Overview

Specifications

Bedrooms

 2

Bathrooms

 2

Covered

 78 m²

Type	Apartment	Status	Under construction
Toilets	2	Furnished	Unfurnished

Description

This property is located in a quiet road in a residential area in the heart of Limassol.

The location of the building offers the best of all worlds: while it is only a short drive from the city center and has easy access to the highway system connecting to all of the island's major cities, the peaceful neighborhood gives off a cozy suburban vibe. Residents benefit from the convenience of being nearby a shopping center, a local school, ship management offices, and other significant businesses. The prominent mall in the city and the upcoming casino resort, City of Dreams Mediterranean, are all just a short drive. Limassol Marina and the city's main commercial port are also nearby

Overview:

2-bedroom apartment (master bedroom with ensuite bathroom)

Spacious open-plan kitchen, living room and dining area

Large verandas

Private car park

Private storage room on the ground floor (2.25 m2)

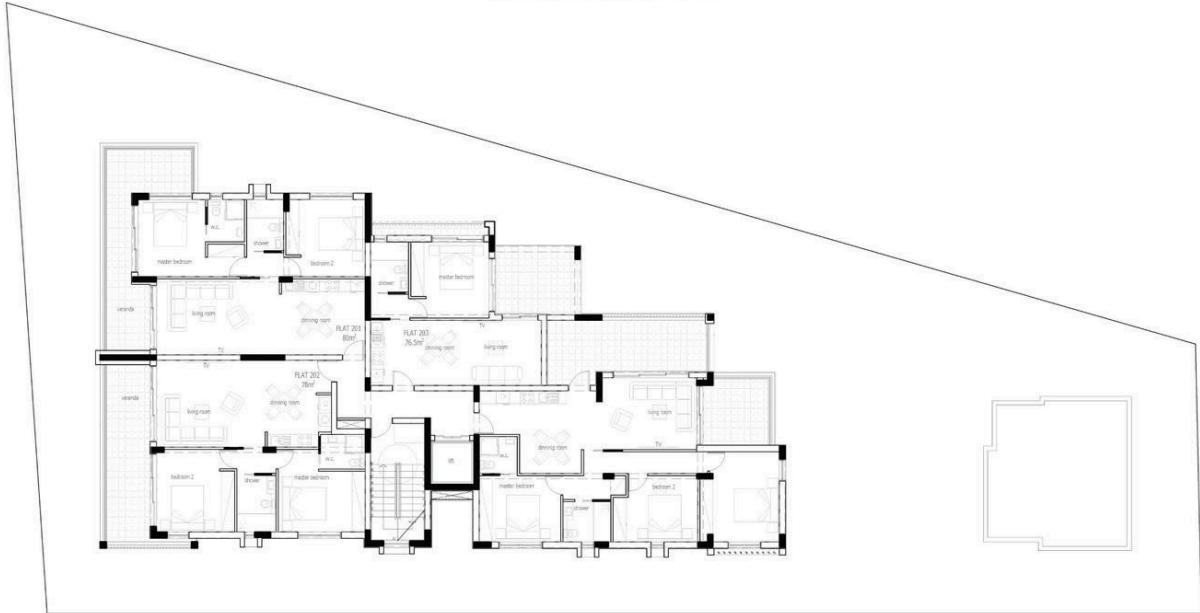
Special features:

Built-in wardrobes

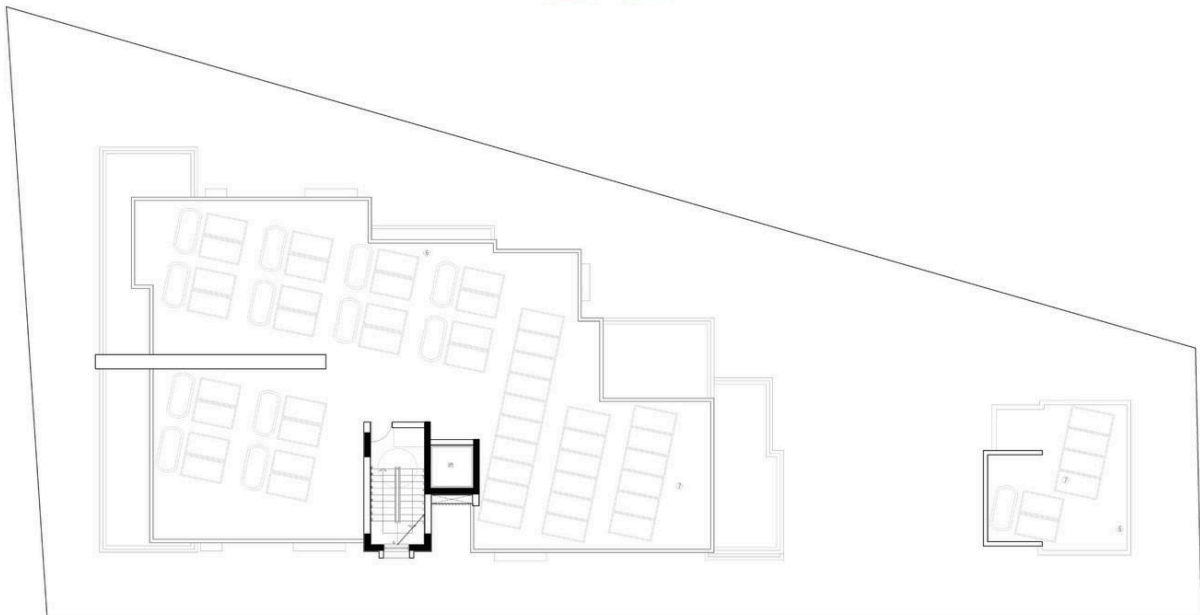


Floor plans

Second Floor Plan



Roof Plan



Additional information

Facilities

Aircondition, Central system

Heating, Central

Parking, Covered

Storage

Features

Bright

Ceramic tiles

Combined kitchen and dining area

Double glazing

Easy access to highway

Easy access to main roads

En suite bathroom

Entrance gate

Fitted wardrobes

Heart of city center

Laminate flooring

Luxury specifications

Modern design

Near amenities

Pressurized water system

Quiet area

Shower

Veranda

Distances

Airport



48 km

Sea




3.5 km

Contact us



Office Properties

 (+357) 25871010

 info@vivorealty.com.cy

