



**VIVO**  
REALTY



## THREE BEDROOM LUXURY VILLA IN TOMPS OF THE KINGS AREA

 [Paphos, Tombs of the Kings](#)

179539



<b>Price</b>	€650,000 +VAT	<b>Type</b>	Detached Villa
<b>Bedrooms</b>	3	<b>Bathrooms</b>	4
<b>Covered</b>	160 m <sup>2</sup>	<b>Plot</b>	300 m <sup>2</sup>
<b>Status</b>	Key ready	<b>Energy efficiency rating</b>	A
<b>Area</b>	Paphos, Tombs of the Kings		

---

## Description

This Villa is a spectacular modern villa with all the luxury you could ever need.  
An attractive contemporary design focused on modern open-plan living.

It is located within walking distance to the beach in a quite neighborhood, a few minutes walk from the main roads but set back enough to hear the birds singing and for you to admire the view from your balcony.

You couldn't wish for a better location, close to all amenities, including two beaches, Lidl supermarket, and public buses.

Ideal for long-term investment.

Features:

- . 2 Stories
- . Air Conditioning
- . Barbeque
- . Central Cooling
- . Cloakroom
- . Energy Efficiency Certificate A
- . Fountain
- . Infinity Pool
- . Laundry Room
- . Lawn
- . Marble Flooring
- . Parking
- . Pressurizing System
- . Prime Location
- . Remote Controlled Gate
- . Seaview
- . Smart Home
- . Suitable for Permanent Residency
- . Underfloor Heating
- . Video Entry System
- . VRV Air-conditioning
- . Walking distant to the beach



[vivorealty.com.cy](http://vivorealty.com.cy)



## Office Properties

Office Administrator

✉ [info@vivorealty.com.cy](mailto:info@vivorealty.com.cy)

☎ (+357) 25871010

## Facilities

Aircondition, Provision

Pool, Private, Infinity

Maid's room

Parking, Uncovered

Gated complex

---

## Features

Smart home

Connected to electric mains

Entrance gate, automated

Investment opportunity

Bright

Double glazing

Marble flooring

Modern design

Walking distance to beach

Barbeque

Easy access to main roads

Utility room

Pressurized water system

Internal stairs

Stone flooring

Quiet Area

Luxury specifications

Sea view

Near amenities

Laundry room

---

## Distances

**Amenities**

3 km

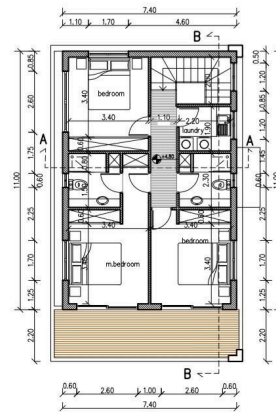
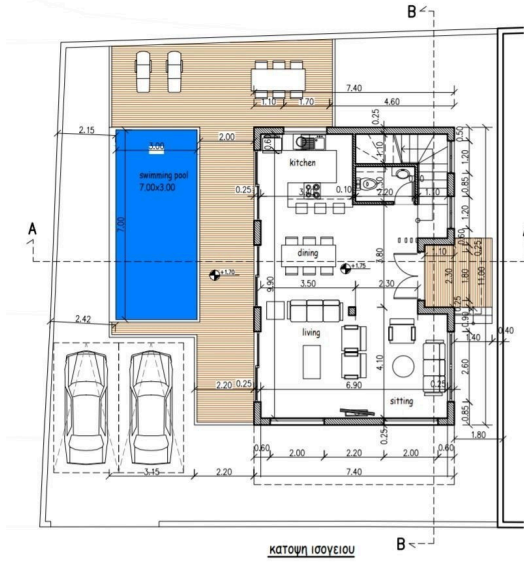
**Airport**

15 km

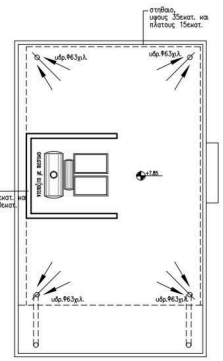
**Sea**

500 m

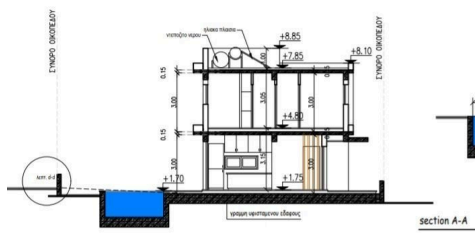
## Floor plans



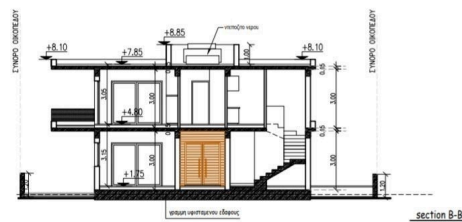
ground floor plan



roof plan



section A-A



section B-B

