

179453

# SEAFRONT 2 BEDROOM APARTMENT IN DASSOUDI AREA

📍 Potamos Germasogeias, Limassol

€1,866,000 +VAT







# Overview

## Specifications

Bedrooms

 2

Bathrooms

 2

Covered

 119 m<sup>2</sup>

Type

**Apartment**

Status

**Under construction**

Furnished

**Unfurnished**

Energy efficiency rating

 **A**

## Description

Seafront 2 bedroom apartment, located in Dassoudi area in Limassol. Some of the key features it has are: spectacular sea views, ultra modern design and specifications, high quality materials and finishes, designer interiors, latest technology appliances, common swimming pool and pool area, playground, residents lounge, private underground parking, reception/lobby, 24 hour concierge and security, secure in house vault with safe deposits, hotel style services and garden.

Nearest points:

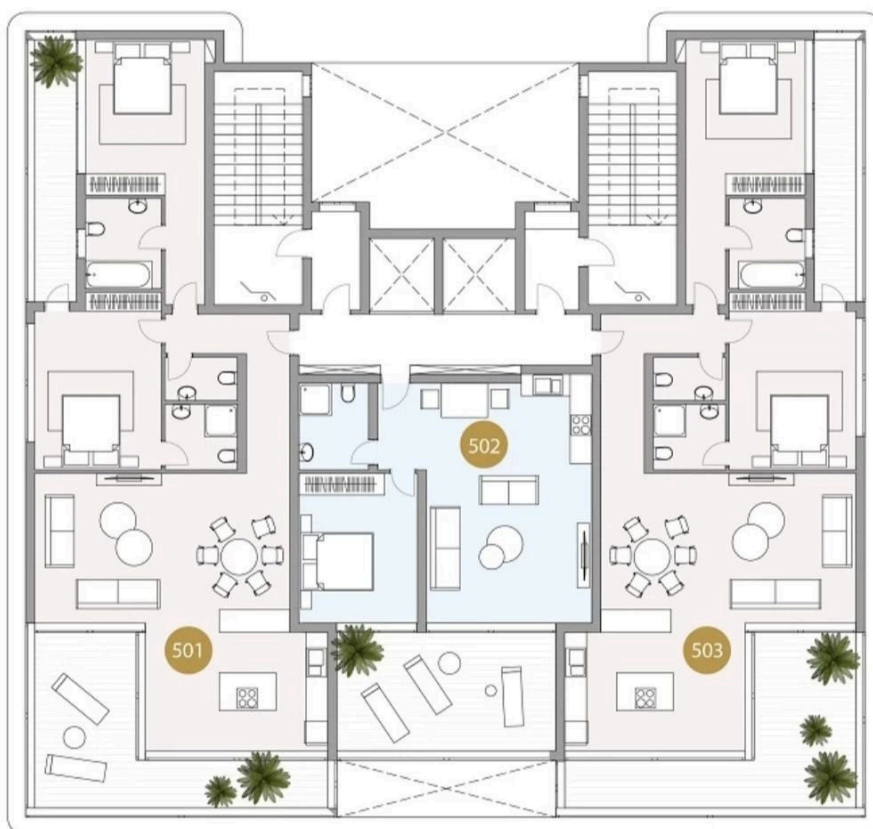
- . Dassoudi park 0.01 km
- . Caffè Nero 0.01 km
- . Tennis Court 0.2 km
- . Lidl 0.6 km
- . Columbia Beach 0.6 km
- . Shell 0.65 km

Estimated Delivery: December 2024





# Floor plans



## Masterplan



1 - Main entrance

2 - Sports area

3 - Playground

4 - Parking area

5 - Lobby

6 - Residential complex

7 - Garden



# Additional information

## Facilities

Aircondition, Split system

Childrens playground

Elevator

Parking, Underground

Pool, Communal

## Features

24-hour security

Bright

City view

Double glazing

Easy access to highway

Easy access to main roads

Garden

Luxury specifications

Modern design

Near amenities

Sea front

Sea view


Veranda

Walking distance to beach

## Contact us



### Office Properties

 (+357) 25871010

 [info@vivorealty.com.cy](mailto:info@vivorealty.com.cy)

