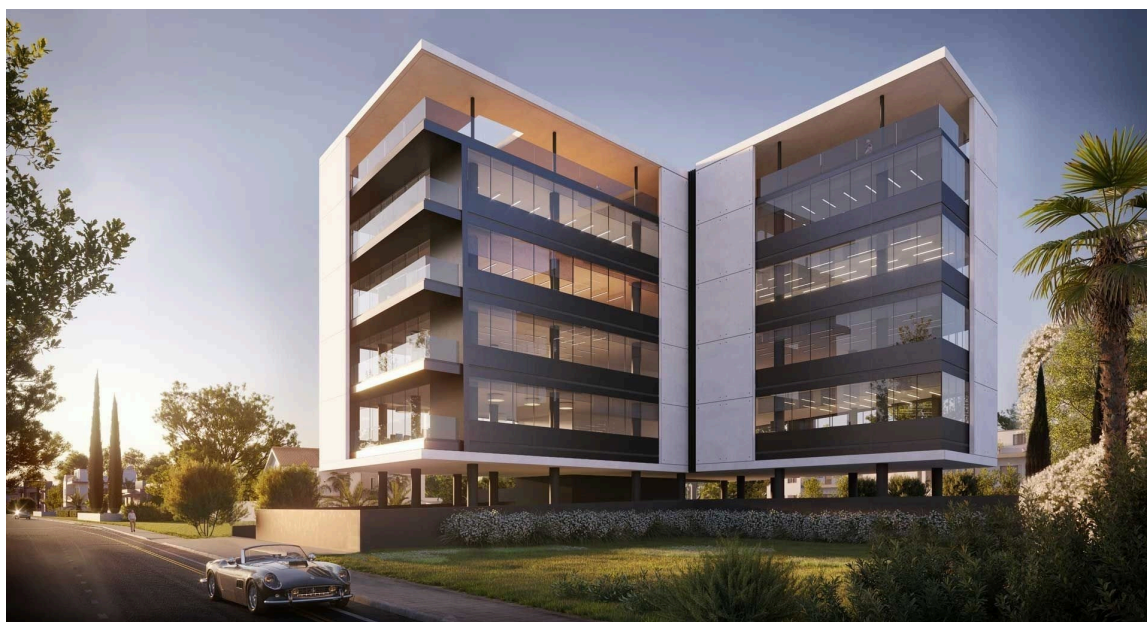


VIVO  
REALTY

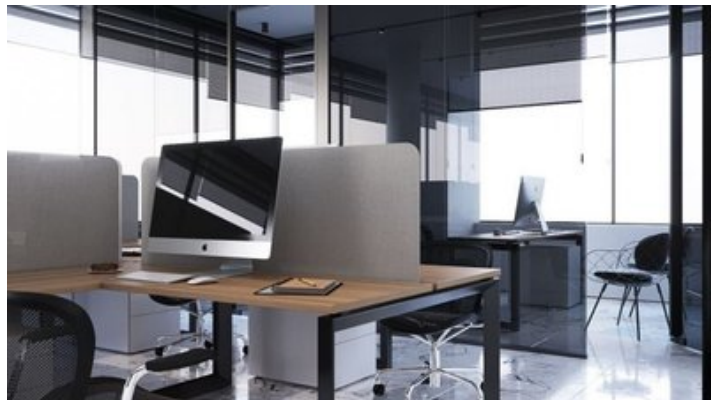


## LUXURY OFFICE OF 428.4 SQ.M. IN LIMASSOL CITY CENTER

 [Limassol, Mesa Geitonia](#)

179415





<b>Price</b>	€4,796,000 +VAT	<b>Type</b>	Office
<b>Covered</b>	428.4 m <sup>2</sup>	<b>Covered veranda</b>	285.6 m <sup>2</sup>
<b>Uncovered veranda</b>	3 m <sup>2</sup>	<b>Status</b>	Under construction
<b>Energy efficiency rating</b>	A	<b>Floor</b>	Top floor / 4
<b>Area</b>	Limassol, Mesa Geitonia		

## Description

Luxury top floor Office in Limassol city center - on a building under construction which consists of a reception area on the ground floor, spacious professional working areas with an exquisite sophisticated design and spacious verandas which enjoy city views.

This property provides easy access to all modern infrastructures and amenities from fine dining to business centers and from high end shopping boutiques to leisure centers. This area simply provides an ease of accessibility to anywhere in Limassol which is an important benefit of this astounding destination.

### MAJOR BENEFITS:

- . Stunning business centre designed by one of the best architects
- . Located in the heart of a well known business area
- . 2 spacious offices per floor
- . Common facilities include a reception area and 23 parking spaces
- . Within easy reach to all necessary infrastructure
- . Stylish cafeterias, luxurious restaurants, banks, schools, and shops are only moments away

### INTERIOR SPECIFICATION

- . Shell & Core construction
- . High ceilings (3.20 m)
- . Provision for VRV at raised floor and suspended ceiling
- . Thermal aluminum window frames with double glazing

NOTE: All the finishes, movable furniture, home appliances & interior items are extras.

Completion date: March 2025



### Office Properties

Office Administrator

✉ info@vivorealty.com.cy  
☎ (+357) 25871010

## Facilities

Aircondition, Provision  
Parking, Covered

Heating, Central  
Elevator

---

## Features

Raised floors  
Easy access to main roads  
High ceilings  
City view  
Reception  
Double glazing  
Marble flooring  
Near amenities

Heart of city center  
Easy access to highway  
Connected to electric mains  
Business facilities  
Main road  
Veranda  
Luxury specifications

---

## Distances

**Sea** 2 km

## Floor plans

