

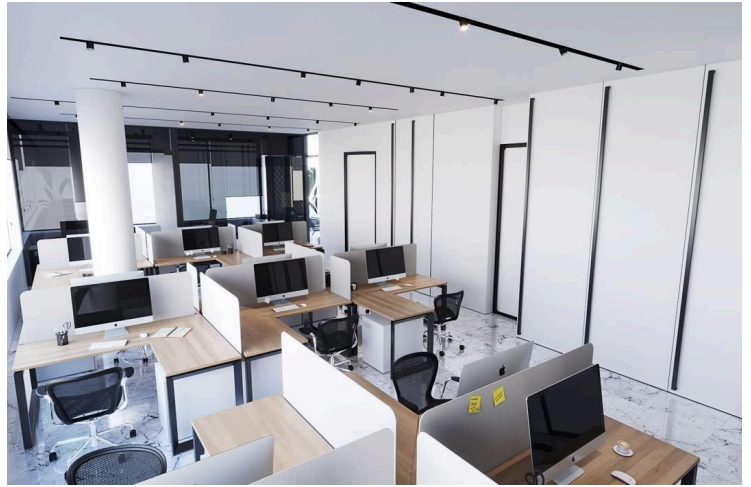
179414

# LUXURY 2ND FLOOR OFFICE OF 343.9 SQ.M. IN LIMASSOL CITY CENTER

 Mesa Geitonia, Limassol

**€2,988,000** +VAT






# Overview

## Specifications

Covered

 **343.9 m<sup>2</sup>**

Type	<b>Office</b>
Covered veranda	<b>31.4 m<sup>2</sup></b>
Uncovered veranda	<b>0 m<sup>2</sup></b>

Status	<b>Under construction</b>
Furnished	<b>Unfurnished</b>
Energy efficiency rating	 <b>A</b>

## Description

Luxury Office on the 2nd floor in Limassol city center - on a building under construction which consists of a reception area on the ground floor, spacious professional working areas with an exquisite sophisticated design and spacious verandas which enjoy city views.

This property provides easy access to all modern infrastructures and amenities from fine dining to business centers and from high end shopping boutiques to leisure centers. This area simply provides an ease of accessibility to anywhere in Limassol which is an important benefit of this astounding destination.

### MAJOR BENEFITS:

- . Stunning business centre designed by one of the best architects
- . Located in the heart of a well known business area
- . 2 spacious offices per floor
- . Common facilities include a reception area and 23 parking spaces
- . Within easy reach to all necessary infrastructure
- . Stylish cafeterias, luxurious restaurants, banks, schools, and shops are only moments away

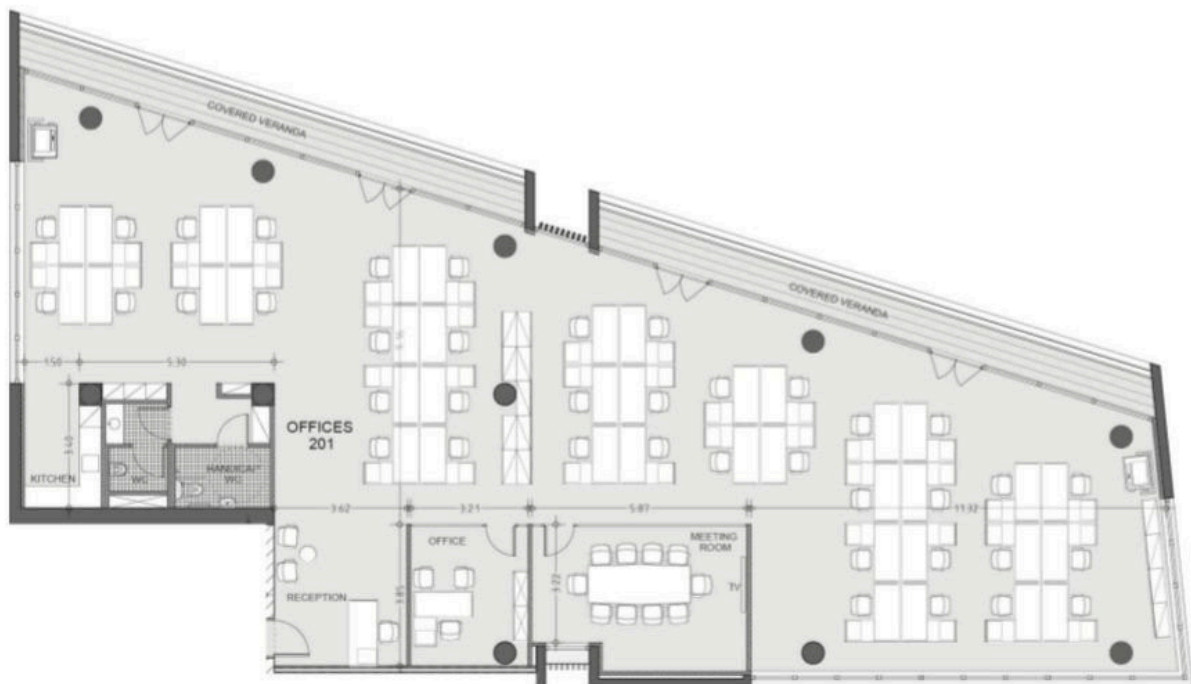
### INTERIOR SPECIFICATION

- . Shell & Core construction
- . High ceilings (3.20 m)
- . Provision for VRV at raised floor and suspended ceiling
- . Thermal aluminum window frames with double glazing

NOTE: All the finishes, movable furniture, home appliances & interior items are extras.



# Floor plans



# Additional information

## Facilities

Aircondition, Provision

Elevator

Heating, Central

Parking, Covered

## Features

Business facilities

City view

Connected to electric mains

Double glazing

Earthquake-resistant structure

Easy access to highway

Easy access to main roads

Energy efficient doors/windows

Heart of city center

High ceilings

Internal stairs

Luxury specifications

Main road

Marble flooring

Near amenities

Raised floors

Reception

Spacious rooms

Veranda

## Distances


Sea

 **2 km**

## Contact us



### Office Properties

 (+357) 25871010

 [info@vivorealty.com.cy](mailto:info@vivorealty.com.cy)

