



VIVO  
REALTY

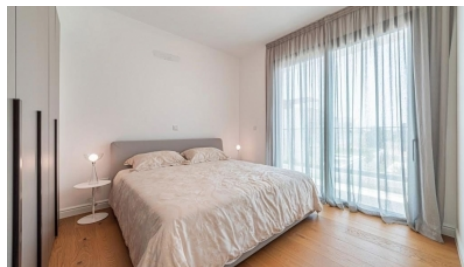
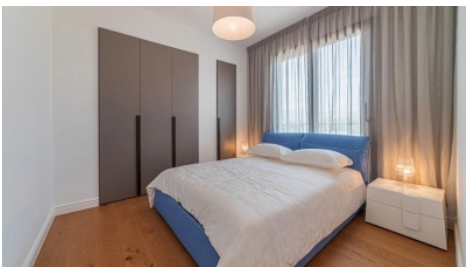


## MODERN 2-BEDROOM APARTMENT IN ZAKAKI AREA NEXT TO THE CITY OF DREAMS!

[📍 Limassol, Zakaki](#)

179134





<b>Price</b>	€449,000 +VAT	<b>Type</b>	Apartment
<b>Bedrooms</b>	2	<b>Bathrooms</b>	1
<b>Covered</b>	76.6 m <sup>2</sup>	<b>Covered veranda</b>	26 m <sup>2</sup>
<b>Uncovered veranda</b>	0 m <sup>2</sup>	<b>Status</b>	Off plan
<b>Floor</b>	2 / 4	<b>Area</b>	Limassol, Zakaki

## Description

Two bedroom 2nd floor apartment for sale in a gated complex with in-house facilities such as pool, gym and sauna, consisting of six blocks, located in one of the most prestigious areas of Limassol, Zakaki.

### MAJOR BENEFITS

- . Gated community with in-house facilities: pool, gym and sauna
- . Prestigious upcoming area of Limassol with rapidly rising demand
- . 2 minutes from a newly built 18-hole golf course
- . Next to Cyprus biggest and only casino resort "City of Dreams"
- . 2 minutes from the famous beach Lady's Mile
- . Across the road from Limassol's biggest shopping and leisure mall
- . 15 minutes drive from Cyprus' cultural icon - Ancient Kourion
- . 5 minutes drive from Limassol's old town and Cyprus biggest yacht club

### INTERIOR SPECIFICATION

- Fully completed finishings
- Laminated parquet in living areas and bedrooms
- Ceramic tiles in the toilets and bathrooms
- Security and fireproof entrance doors
- Provisions for A/C
- High standard sanitary ware from European brands
- Thermal aluminum window frames with double glazing
- High standard kitchen cabinets

NOTE: Movable furniture, home appliances & interior items are extras.

Completion date: October 2025



## Office Properties

Office Administrator

✉ info@vivorealty.com.cy  
☎ (+357) 25871010

## Facilities

Aircondition, Provision

Pool, Communal

Gym

Gated complex

Heating, Provision

Elevator

Sauna

Landscaped garden

---

## Features

Bath

Easy access to highway

Connected to electric mains

Ceramic tiles

Double glazing

Luxury specifications

Near bus route

Easy access to main roads

Combined kitchen and dining area

Entrance gate

Laminate flooring

Veranda

Modern design

Near amenities

## Floor plans

