



**VIVO**  
REALTY

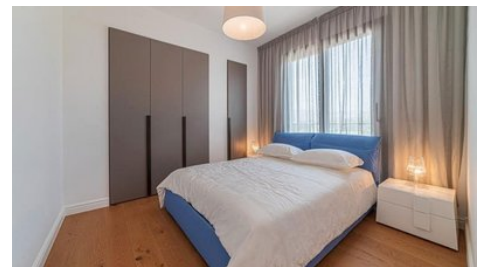
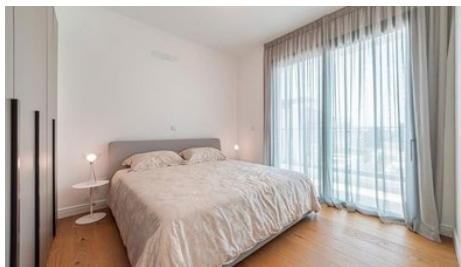


## MODERN TWO BEDROOM APARTMENT IN PANO POLEMIDIA

 [Limassol, Pano Polemidia](#)

178871





<b>Price</b>	€392,000 +VAT	<b>Type</b>	Apartment
<b>Bedrooms</b>	2	<b>Covered</b>	89 m <sup>2</sup>
<b>Covered veranda</b>	23 m <sup>2</sup>	<b>Status</b>	Off plan
<b>Energy efficiency rating</b>	A	<b>Floor</b>	2 / 3
<b>Area</b>	Limassol, Pano Polemidia		

---

## Description

Modern two bedroom apartment, located in Pano Polemidia. Has breathtaking sea and city panoramic views, situated in a gated complex, with indoor facilities like gym, communal swimming pool, and resident roof garden. Built with modern architecture, has spacious layouts, provision for underfloor heating and provision for air conditioning, laminated parquet in the living area and bedrooms, ceramic tiles in the bathrooms, double glazing windows and close to all city amenities.

Delivery: December 2025



### Office Properties

Office Administrator

✉ info@vivorealty.com.cy

☎ (+357) 25871010

## Facilities

Aircondition, Provision

Parking, Covered

Elevator

Storage

Heating, Provision

Pool, Communal

Gym

Gated complex

---

## Features

Easy access to main roads

Bright

Ceramic tiles

Double glazing

Modern design

Sea view

Easy access to highway

City view

Laminate flooring

Veranda

Panoramic view

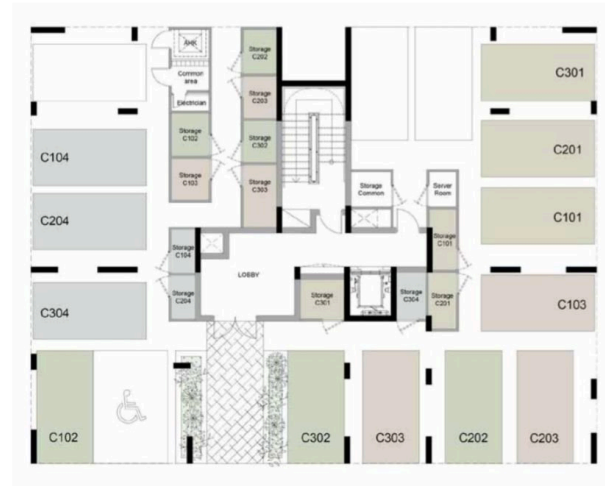
Near amenities

## Floor plans

MASTERPLAN



GROUND FLOOR BLOCK C



## FLOOR 2 BLOCK C



Unit No	Total Area, m <sup>2</sup>
201	180.88
202	147.83
203	143.62
204	90.25

