



**VIVO**  
REALTY



## MODERN TWO BEDROOM APARTMENT IN PANO POLEMIDIA

 [Limassol, Pano Polemidia](#)

178865



<b>Price</b>	€377,000 +VAT	<b>Type</b>	Apartment
<b>Bedrooms</b>	2	<b>Covered</b>	84 m <sup>2</sup>
<b>Covered veranda</b>	18.1 m <sup>2</sup>	<b>Uncovered veranda</b>	0 m <sup>2</sup>
<b>Status</b>	Off plan	<b>Energy efficiency rating</b>	A
<b>Floor</b>	2 / 4	<b>Area</b>	Limassol, Pano Polemidia

---

## Description

Modern two bedroom apartment, located in Pano Polemidia. Has breathtaking sea and city panoramic views, situated in a gated complex, with indoor facilities like gym, communal swimming pool, and resident roof garden. Built with modern architecture, has spacious layouts, provision for underfloor heating and provision for air conditioning, laminated parquet in the living area and bedrooms, ceramic tiles in the bathrooms, double glazing windows and close to all city amenities.

Delivery: July 2025



### Office Properties

Office Administrator

✉ info@vivorealty.com.cy

☎ (+357) 25871010

## Facilities

Aircondition, Provision

Pool, Communal

Gym

Gated complex

Heating, Provision

Elevator

Storage

---

## Features

Easy access to main roads

Bright

Ceramic tiles

Double glazing

Modern design

Sea view

Easy access to highway

City view

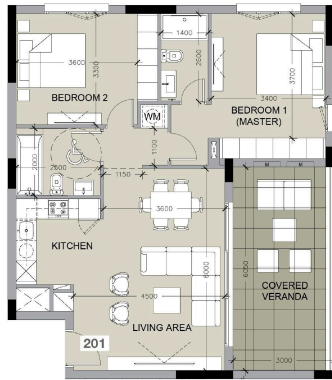
Laminate flooring

Veranda

Panoramic view

Near amenities

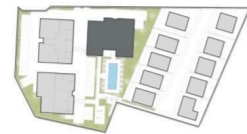
## Floor plans



MASTERPLAN



GROUND FLOOR BLOCK A



## FLOOR 2 BLOCK A



Unit No	Total Area, m <sup>2</sup>
201	124.61
202	127.30
203	89.09
204	186.16
205	83.28

