

**VIVO**  
REALTY

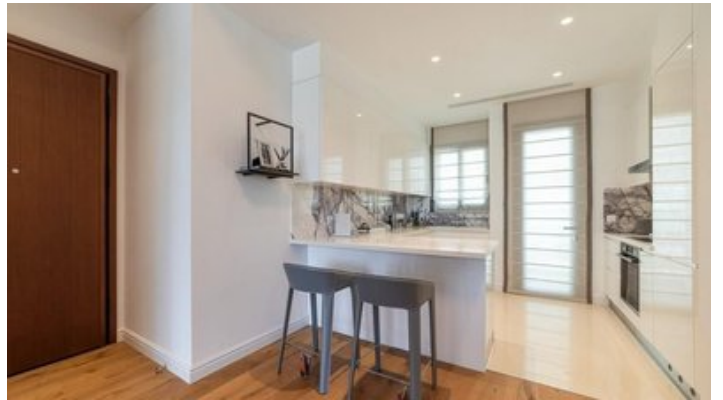


## LUXURY TWO BEDROOM APARTMENT IN POTAMOS GERMASOGEIAS

📍 Limassol, Potamos Germasogeias

178856





|                        |                   |                |                                   |
|------------------------|-------------------|----------------|-----------------------------------|
| <b>Price</b>           | €920,000 +VAT     | <b>Type</b>    | Apartment                         |
| <b>Bedrooms</b>        | 2                 | <b>Covered</b> | 90 m <sup>2</sup>                 |
| <b>Covered veranda</b> | 22 m <sup>2</sup> | <b>Status</b>  | Under construction                |
| <b>Floor</b>           | 2 / 4             | <b>Area</b>    | Limassol, Potamos<br>Germasogeias |

---

## Description

Two bedroom luxury apartment in a complex under construction in the very center of the Limassol tourist zone, in Potamos Germasogeias. The project is located in the most prestigious and quiet residential area of Limassol - Papas. 500 meters to the sandy beach of Dasoudi with eucalyptus park. The complex has a communal swimming pool, gym, sauna and covered parking.

The apartment also has:

- Fully completed finishings
- Semi-solid parquet floors in each room
- Marble floor and walls in the toilets and bathrooms
- High ceilings (3.15 m)
- Security and fireproof entrance doors
- Water heated floors
- Air conditioning
- High standard sanitary ware from European brands
- Thermal aluminum window frames with double glazing
- High standard kitchen cabinets
- High standard wardrobes from European brands
- Soft closers
- Door stoppers

Delivery Date: February 2025



### Office Properties

Office Administrator

✉ info@vivorealty.com.cy

☎ (+357) 25871010

## Facilities

Aircondition, Split system

Parking, Covered

Elevator

Sauna

Gated complex

Heating, Underfloor

Pool, Communal

Gym

Storage

---

## Features

Easy access to main roads

High ceilings

Semi-solid parquet flooring

Veranda

Marble flooring

Modern design

Walking distance to beach

Easy access to highway

Bright

Double glazing

Quiet Area

Luxury specifications

Sea view

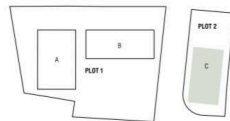
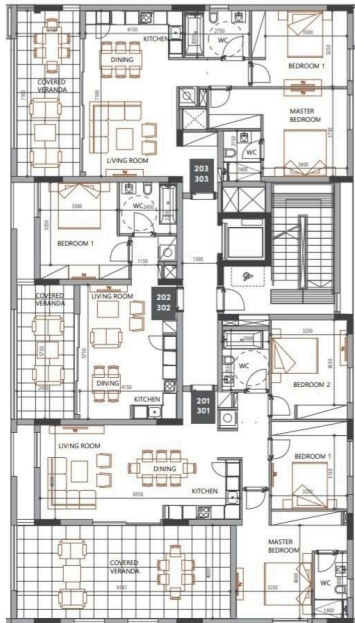
Near amenities



## Floor plans

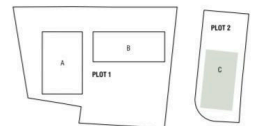
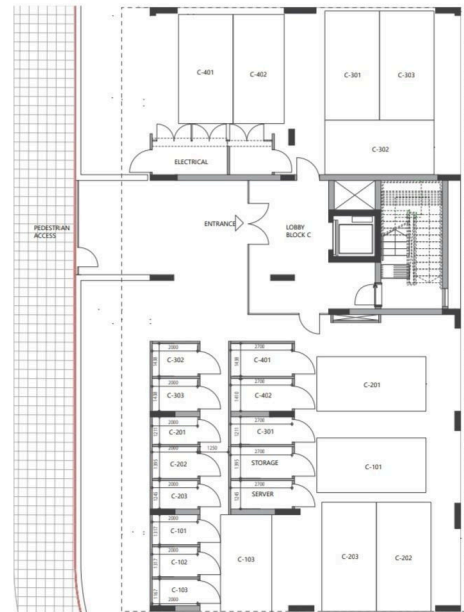
### •block c

floor 2, 3



### •block c

ground floor



### •master plan

