

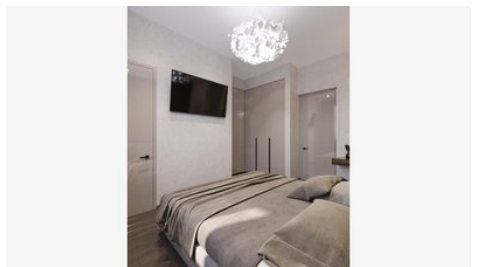
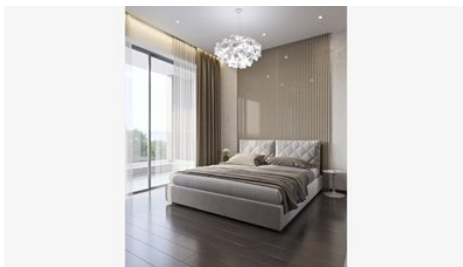
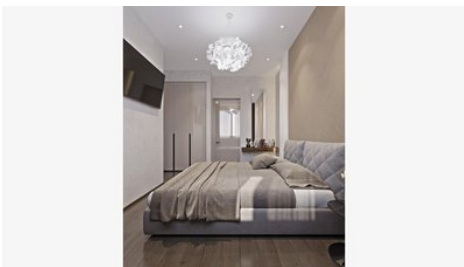
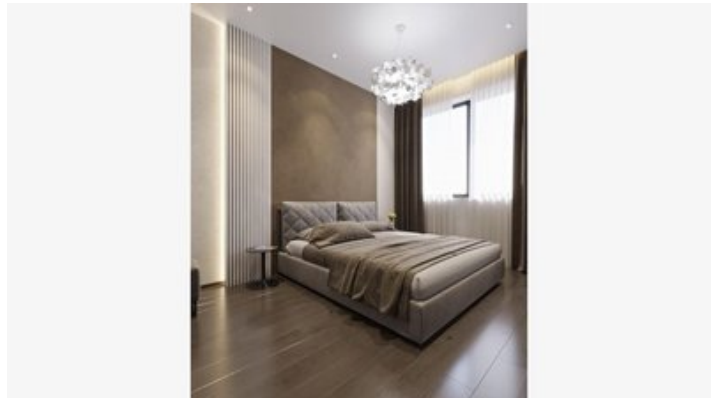
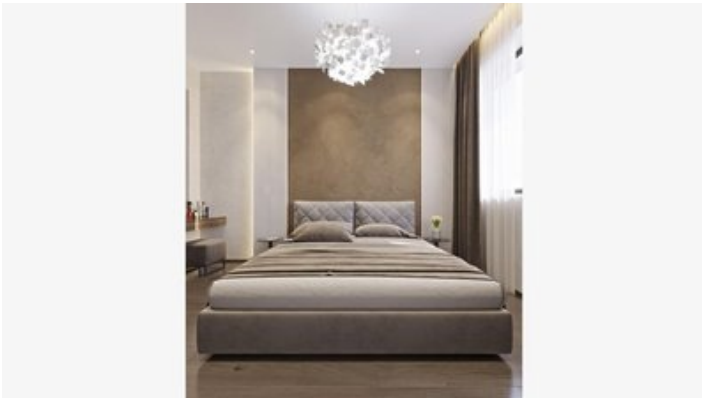
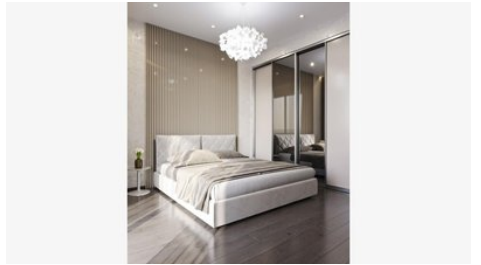
**VIVO**  
REALTY



## MODERN TWO BEDROOM APARTMENT IN LINOPETRA AREA

 [Limassol, Linopetra](#)

178482



<b>Price</b>	€600,000 +VAT	<b>Type</b>	Apartment
<b>Bedrooms</b>	2	<b>Bathrooms</b>	2
<b>Covered</b>	93.89 m <sup>2</sup>	<b>Covered veranda</b>	29.48 m <sup>2</sup>
<b>Status</b>	Off plan	<b>Area</b>	Limassol, Linopetra

---

## Description

Modern two bedroom apartment, locate in Linopetra Tourist area. Only 700 meters from the sea and in close proximity from all city amenities. Situated in a gated controlled complex, with storage, parking space, gym, green areas and also electrical vehicle charging point. The apartment has city and sea views, high ceilings, underfloor heating, solar panels, air conditioning split units. Located in a quiet area.



### Office Properties

Office Administrator

✉ info@vivorealty.com.cy

☎ (+357) 25871010

## Facilities

Aircondition, Split system

Parking, Uncovered

Gym

Solar water heater

Heating, Underfloor

Elevator

Storage

---

## Features

High ceilings

City view

Veranda

Modern design

Walking distance to beach

Entrance gate

Double glazing

Quiet Area

Sea view

Near amenities