

177919

MODERN THREE BEDROOM APARTMENT IN PANTHEA AREA

 Panthea, Limassol

€590,000 +VAT





Overview

Specifications

Bedrooms

 3

Covered

 122.7 m²

Type

Apartment

Furnished

Unfurnished

Status

Key ready

Description

Modern three bedroom apartment, located in Panthea area. Minutes away from the heart of Limassol and close to all city amenities. Has covered covered parking space and storage room. The central entrance of the building is controlled by video intercom system.

Some of the specifications it has are: underfloor heating (full installation), conceal air condition in the living room (full installation), split unit air conditions in all the other areas (full installation), false ceiling in the living room with hidden lights, hot water circulation system and security cameras with one week digital recording around the building and the entrance.

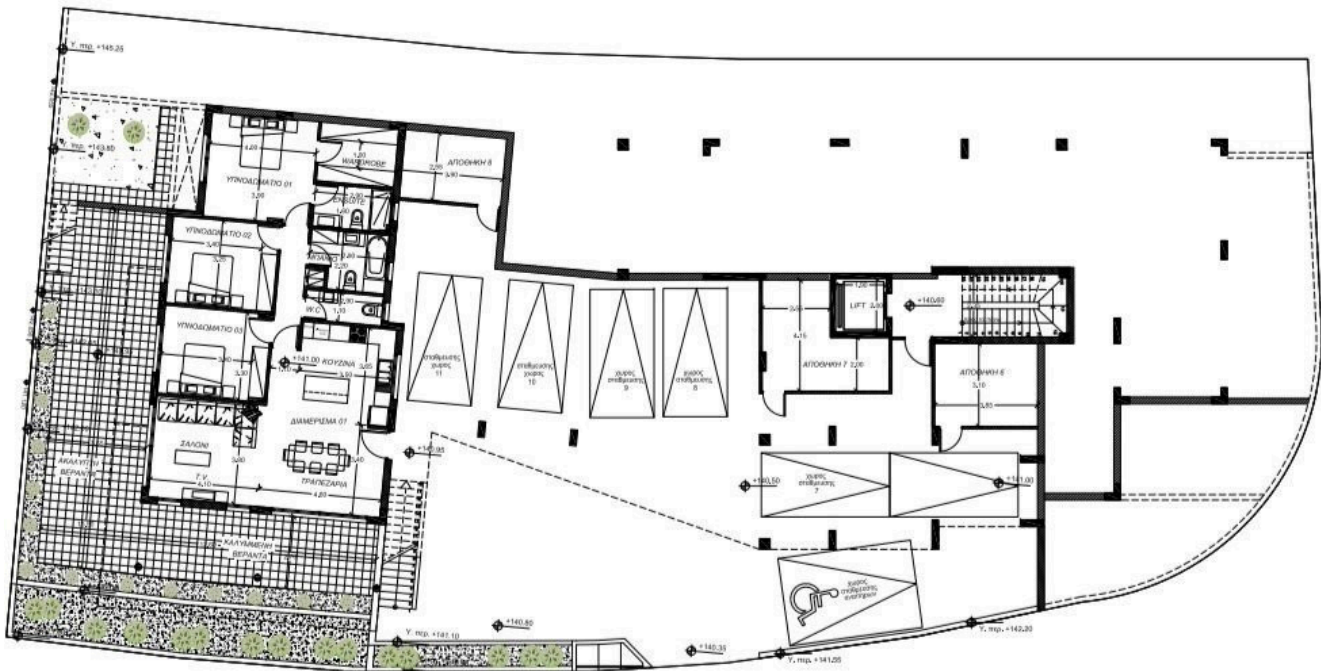
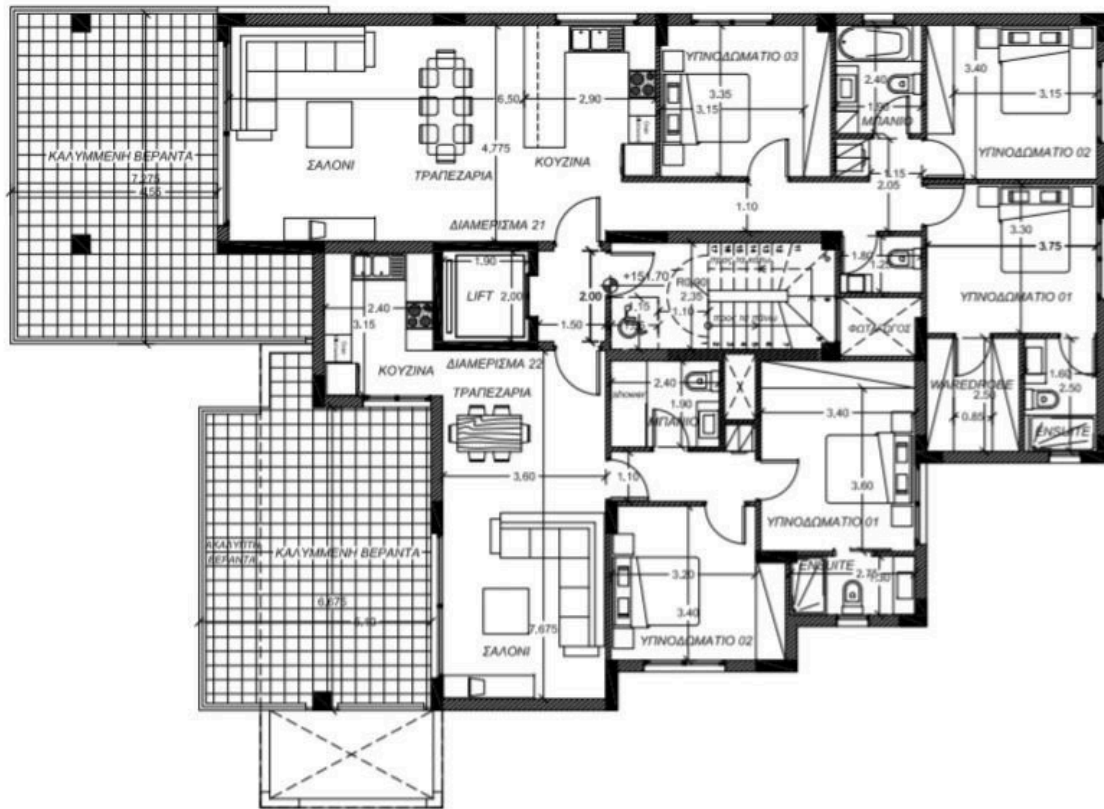
Provisions

- . Security system – Burglar Alarm sensors to cover all main areas of the apartment.
- . Dishwasher in the kitchen.
- . Satellite antenna.
- . Structure cabling.
- . Home cinema in the living room.
- . Wall mounted plasma TV in the living room and bedrooms.
- . Fly screens

Delivery Date: September 2023

If you require any other information please don't hesitate to contact us.

Floor plans



Additional information

Facilities

Aircondition, Split system

Heating, Underfloor

Elevator

Parking, Covered

Gated complex

Storage

Features

Alarm system (provision)

Ceramic tiles

Modern design

Sea view

Balcony

Easy access to highway

Mountain view

Veranda

CCTV


Easy access to main roads

Near amenities

Contact us



Office Properties

 (+357) 25871010

 info@vivorealty.com.cy