



**VIVO**  
REALTY



## THREE BEDROOM PENTHOUSE APARTMENT IN PETROU AND PAVLOU AREA

📍 [Limassol, Petrou & Pavlou](#)

177089



<b>Price</b>	€590,000 +VAT	<b>Type</b>	Apartment
<b>Bedrooms</b>	3	<b>Covered</b>	95 m <sup>2</sup>
<b>Covered veranda</b>	21 m <sup>2</sup>	<b>Status</b>	Under construction
<b>Energy efficiency rating</b>	B	<b>Floor</b>	Penthouse / 3
<b>Area</b>	Limassol, Petrou & Pavlou		

## Description

Three bedroom penthouse apartment located in one of the most developed areas in the center of the city of Limassol's, in the Petrou & Pavlou area.

Situated on the 3rd floor in an under construction building of 3 floors with a total of 7 apartments. This apartment is spacious and has a modern design, high quality of construction and finishing materials, Italian cuisine, high-quality plumbing, covered veranda, and storage area. It features an astonishing combination of wood and marble elements. It includes an en-suite master bathroom while has a covered parking space and storage room on the ground floor. It also has spacious living area, double glazed windows and it is close to all city amenities.

It also has:

- Provision for VRV System in living room and split units in bedrooms which are included in the price.
- Provision for Air conditioning units cooling / heating
- Provision for charging electrical cars for each unit
- Entrance video phone
- Possibility of an optional roof garden of 57 sqm
- Provision of pipework only for hot water wall radiators

Location:

- . Sea: 2 km
- . Larnaca Airport: 68 km
- . Paphos Airport: 62 km
- . Shops: 200 m
- . Restaurants: 350 m

Completion Date: Dec 2023



### Office Properties

Office Administrator

✉ info@vivorealty.com.cy  
☎ (+357) 25871010

## Facilities

Aircondition, Provision

Parking, Covered

Storage

Solar water heater

Heating, Provision

Elevator

Landscaped garden

---

## Features

Thermal insulation

Easy access to highway

Bright

Ceramic tiles

Parquet flooring

Double glazing

En suite Bathroom

Near amenities

Easy access to main roads

Spacious rooms

City view

Mountain view

Laminate flooring

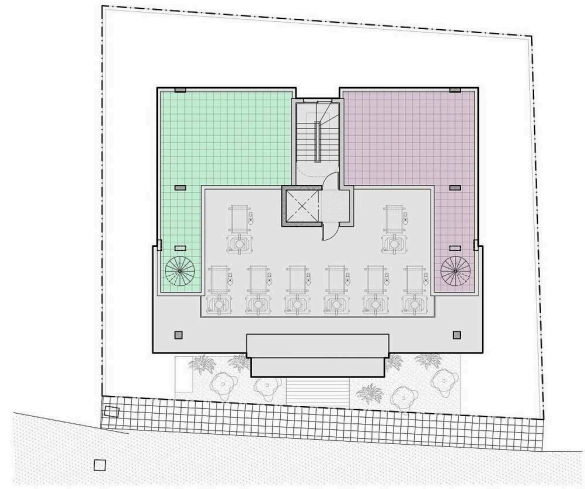
Veranda

Modern design

## Floor plans



**3rd Floor**



**Roof**