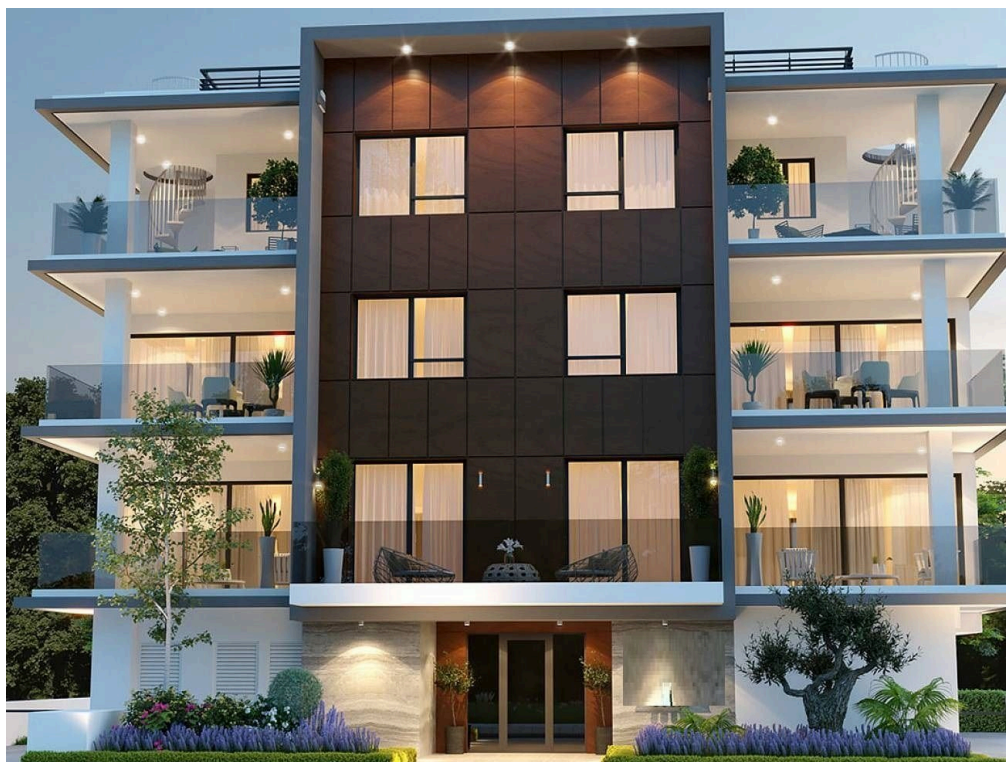




VIVO  
REALTY



## TWO BEDROOM DUPLEX APARTMENT IN PETROU AND PAVLOU AREA

📍 Limassol, Petrou & Pavlou

177009





<b>Price</b>	€385,000 +VAT	<b>Type</b>	Apartment
<b>Bedrooms</b>	2	<b>Covered</b>	80 m <sup>2</sup>
<b>Covered veranda</b>	16 m <sup>2</sup>	<b>Status</b>	Under construction
<b>Energy efficiency rating</b>	B	<b>Floor</b>	1 / 3
<b>Area</b>	Limassol, Petrou & Pavlou		

## Description

Two bedroom duplex apartment located in one of the most developed areas in the center of the city of Limassol's, in the Petrou & Pavlou area.

Situated on the 1st floor in an under construction building of 3 floors with a total of 7 apartments. This apartment is spacious and has a modern design, high quality of construction and finishing materials, Italian cuisine, high-quality plumbing, covered veranda, and storage area. It features an astonishing combination of wood and marble elements. It has a covered parking space and storage room on the ground floor. It also has spacious living area, double glazed windows and it is close to all city amenities.

It also has:

- Provision for VRV System in living room and split units in bedrooms
- Provision for Air conditioning units cooling / heating
- Provision for charging electrical cars for each unit
- Entrance video phone
- Provision of pipework only for hot water wall radiators

Location:

- . Sea: 2 km
- . Larnaca Airport: 68 km
- . Paphos Airport: 62 km
- . Shops: 200 m
- . Restaurants: 350 m

Completion Date: Dec 2023



### Office Properties

Office Administrator

✉ info@vivorealty.com.cy  
☎ (+357) 25871010

## Facilities

Aircondition, Provision

Parking, Covered

Storage

Solar water heater

Heating, Provision

Elevator

Landscaped garden

---

## Features

Thermal insulation

Easy access to highway

Bright

Ceramic tiles

Parquet flooring

Double glazing

Modern design

Easy access to main roads

Spacious rooms

City view

Mountain view

Laminate flooring

Veranda

Near amenities

## Floor plans

1st Floor



Roof

