

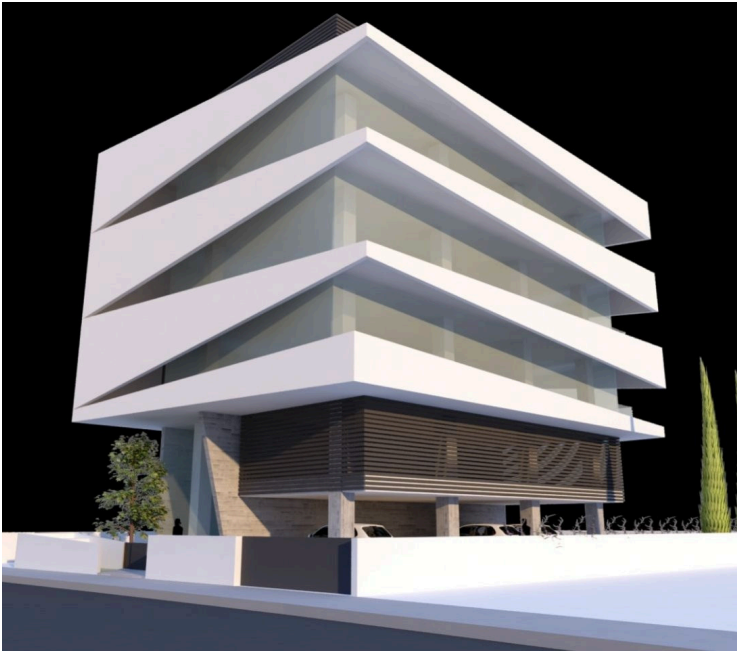
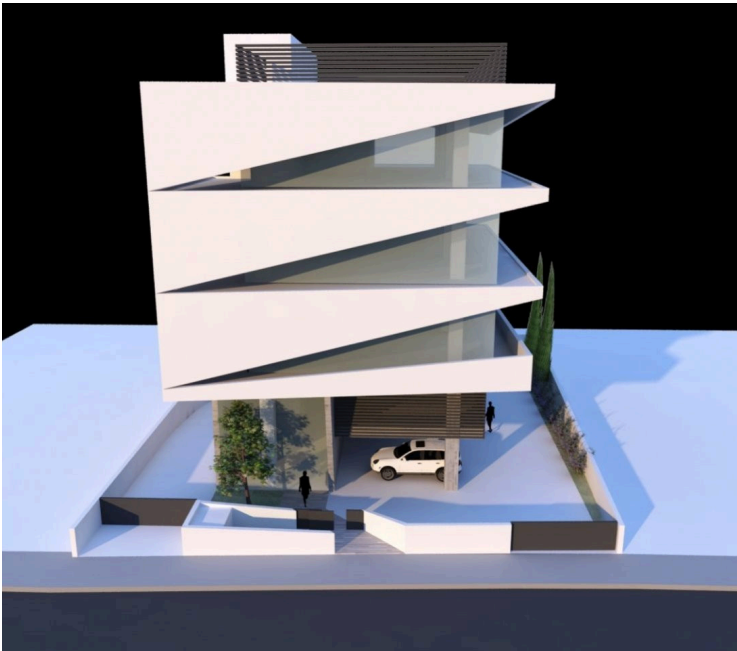
176567

# OFFICE OF TOTAL AREA 272 SQM IN ZAKAKI AREA

 Zakaki, Limassol

**€1,075,000** +VAT





# Overview

## Specifications

Covered

 **181 m<sup>2</sup>**

Type

**Office**

Status

**Off plan**

## Description

Office of total area of 272 sqm, located in Zakaki area, near all city amenities. Situated in a unique building is very close to the New Casino, New port and the Mall of Limassol. It also has very easy access to the city center and the Limassol Marina.

It has covered area of 181 sqm, covered verandas of 59 sqm, circulation of 32 sqm and total area of 272 sqm.

It is an open plan office with large covered veranda, high ceilings and thermal windows, VRV air conditioning system, raised access flooring system, built with high quality materials, has fire alarm and also video phone entry system.



# Additional information

## Facilities

Aircondition, Split system

## Features

Double glazing

Easy access to highway

Easy access to main roads

Fire detector

Raised floors

Reception

## Contact us



### Office Properties

 (+357) 25871010

 [info@vivorealty.com.cy](mailto:info@vivorealty.com.cy)

