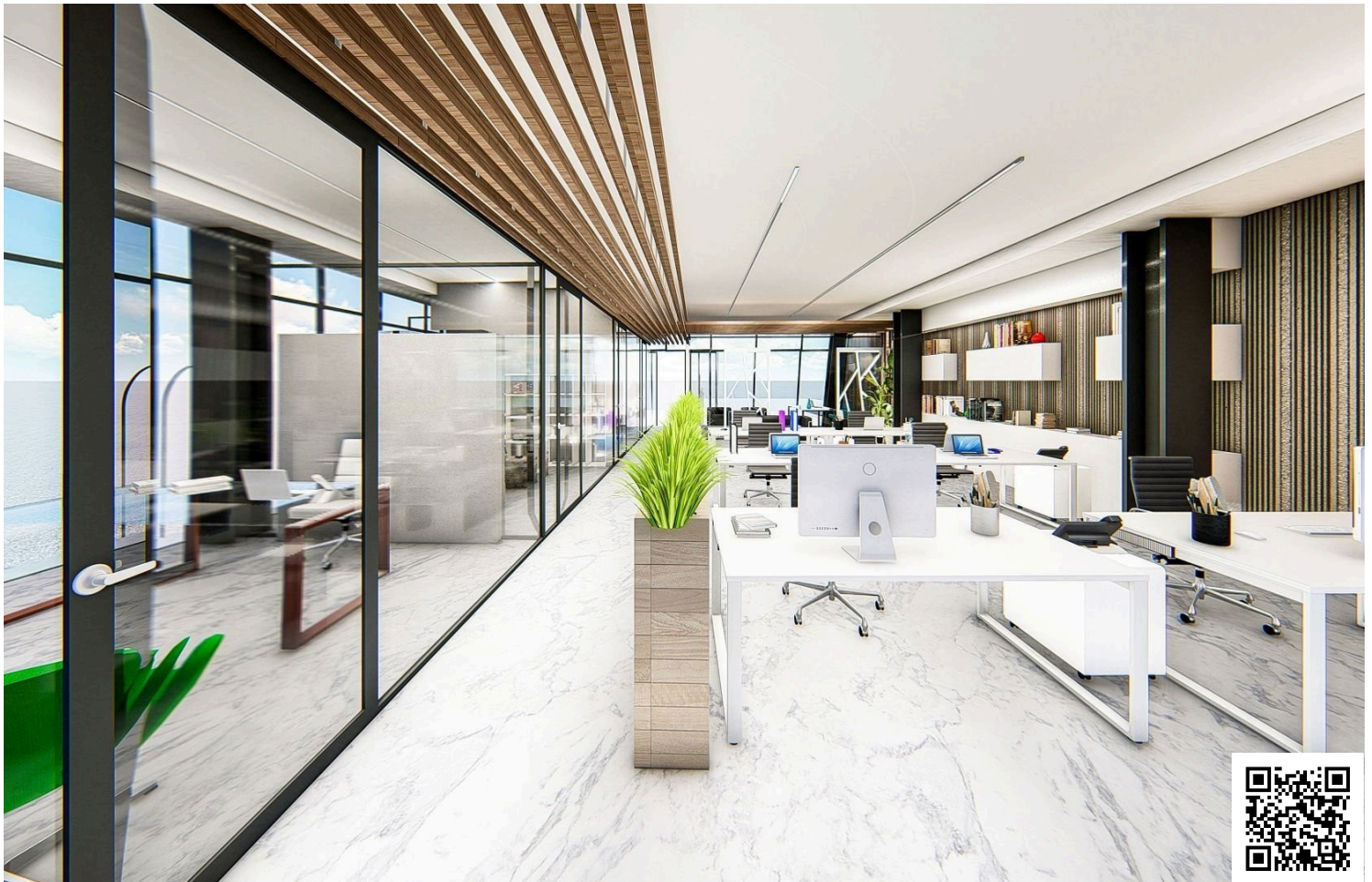


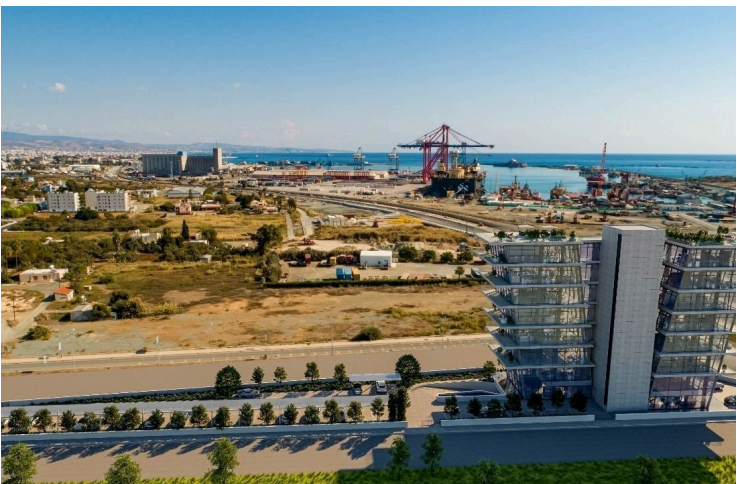
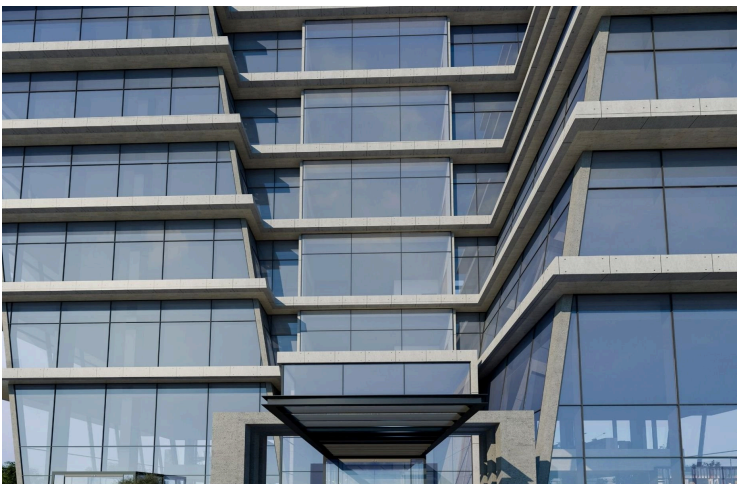
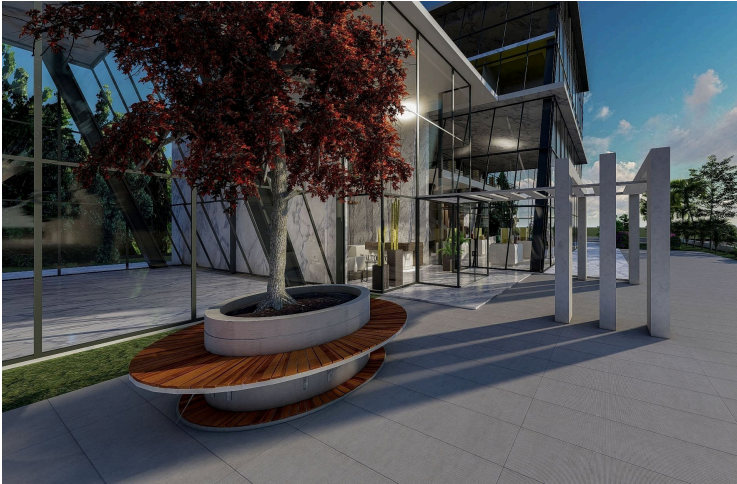
175872

OFFICE NEAR THE LIMASSOL PORT IN ZAKAKI AREA

 Zakaki, Limassol

€2,338,710 +VAT





Overview

Specifications

Covered

 **157.97 m²**

Type	Office
Toilets	2

Plot	194.61 m²
Status	Off plan

Description

Office located near the Limassol port in Zakaki area. This office has panoramic views, 3 bathrooms, 2 parking spaces and covered veranda.

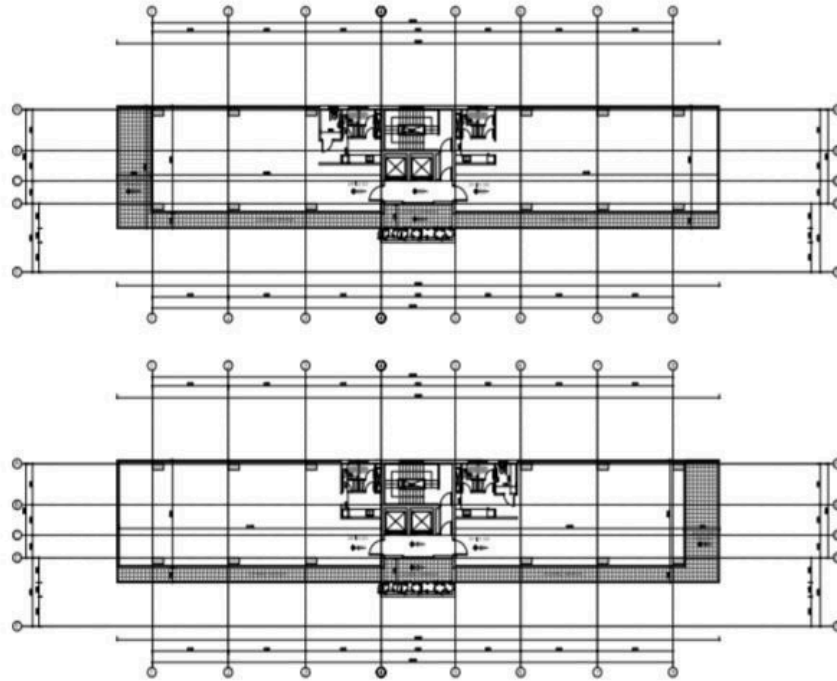
Some of the features it has are: fully completed finishings, marble floors and walls in the toilets and bathrooms, high ceilings, provision for VRV system, double glazed thermal aluminium window frames, and high-quality built-in office cabinets from Italy.

Delivery Date: 2025

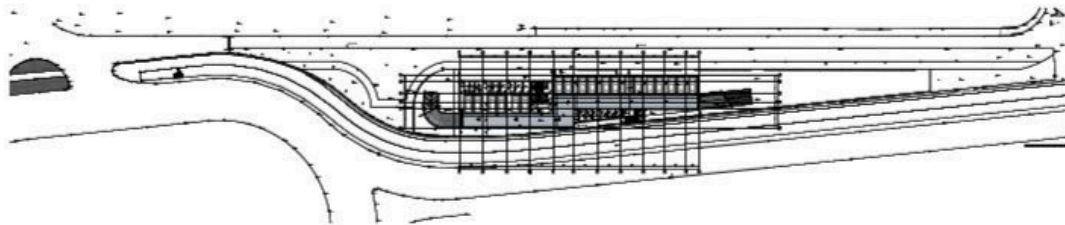


Floor plans

2nd & 3rd FLOOR



BASEMENT



Additional information

Facilities

Aircondition, Provision

Elevator

Heating, Provision

Parking, Uncovered

Features

Double glazing

Easy access to highway

Easy access to main roads

Marble flooring

Near amenities

Contact us



Office Properties

 (+357) 25871010

 info@vivorealty.com.cy

