

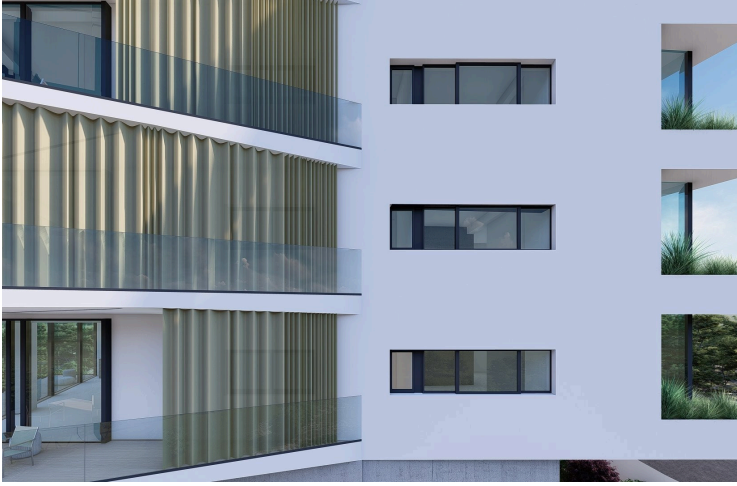
174662

MODERN THREE BEDROOM APARTMENT IN PANTHEA HILLS

 Panthea, Limassol

€690,000 +VAT





Overview

Specifications

Bedrooms

 3

Bathrooms

 2

Covered

 161 m²

Type

Apartment

Furnished

Unfurnished

Status

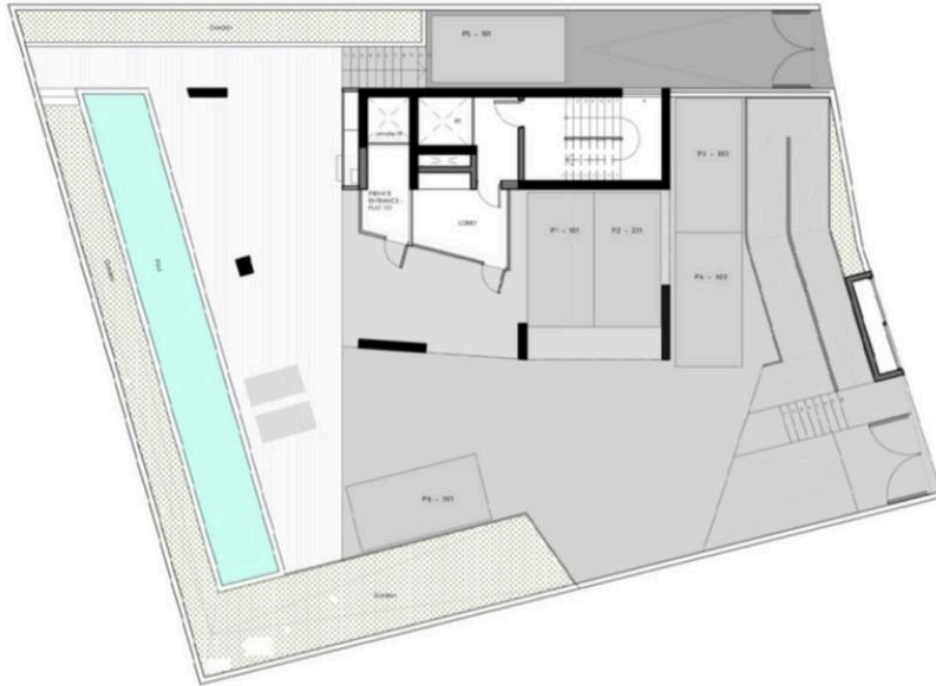
Off plan

Description

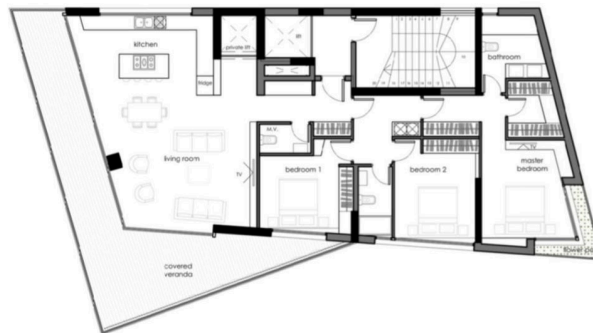
Modern three bedroom apartment situated along Limassol's prestigious Panthea Hills. Situated on a building with a total of 3 whole floor apartments, has panoramic city views, easy access to the highway, located in a suburban area, has communal swimming pool, covered veranda, storage area and close to all city amenities.

Floor plans

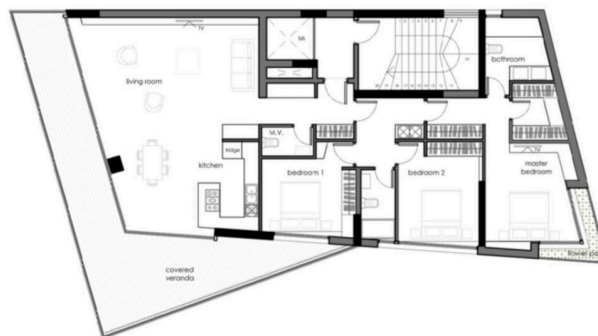
ground floor



first floor



second floor



Additional information

Facilities

Parking, Uncovered

Pool, Communal

Storage

Features

City view

Double glazing

Easy access to highway


Panoramic view

Veranda

Contact us



Office Properties

 (+357) 25871010

 info@vivorealty.com.cy