

174626

FOUR BEDROOM LUXURY APARTMENT IN LIMASSOL MARINA

 Limassol - Marina, Limassol

€5,700,000 +VAT





Overview


Specifications

Bedrooms

 4

Covered

 201 m²

Type	Apartment	Status	Key ready
Covered veranda	45 m²	Year of construction	2021
Uncovered veranda	6 m²	Energy efficiency rating	 A

Description

Four bedroom apartment on the fourth floor, located in Limassol Marina, just a few meters from a private sandy beach and has incomparable views of the harbor and city. The eastern part of the artificial island is framed by marinas for yachts, and the owners of the apartments retain the priority right to purchase them.

Features:

It has 45 m² covered and 6 m² uncovered terraces and is located within walking distance of luxury boutiques, shops, restaurants and bars, recreation areas and cultural sites. The living dining kitchen and bathroom areas are from marble, the verandas are from ceramic tiles, the bedrooms have parquet floors, the entrance door of the apartment is security metal door, has double glazing windows, pressurized system and video phone in the main entrance. The kitchen is pre-fitted with ceramic hobs, refrigerator, electric oven, extractor hood, microwave oven, washing machine, dishwasher and tumble dryer. It also has parking and storage room.

In addition, it has spotlights in the bathroom, WIFI will be supplied and installed, has air conditioning units, underfloor heating and heated towel rails. The apartment has sea view and also city view.

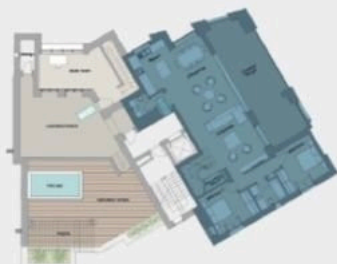
Marina services and facilities:

- Monitoring VHF Channel 12
- Stable power provision up to 630 amps, 415v at 50Hz
- Fresh water
- 24-hour berthing assistance
- 24-hour security and CCTV
- Concierge services
- High speed fibre internet, telephone and IPTV
- WI-FI access



Floor plans

Bedrooms	4
Floor	3-4
Pool	COMMUNAL
Covered Area	201m ²
Covered Terraces	45m ²
Total Covered Area	246m ²
Common Area	41m ²
Uncovered Terrace	6m ²
Sundeck	127m ²
Pool Spa	YES



Additional information

Facilities

Aircondition, Split system

Gym

Parking, Covered

Solar water heater

Elevator

Heating, Underfloor

Pool, Communal

Spa

Gated complex

Landscaped garden

Solar photovoltaic panels

Storage

Features

24-hour security

Ceramic tiles

Easy access to highway

Heart of city center

Modern design

Quiet area

Sea view

Walking distance to beach

Bright

City view

Easy access to main roads

Luxury specifications

Near amenities

Rental potential

Spacious rooms

CCTV

Double glazing

En suite bathroom

Marble flooring

Parquet flooring


Sea front

Veranda

Contact us



Office Properties

 (+357) 25871010

 info@vivorealty.com.cy

