

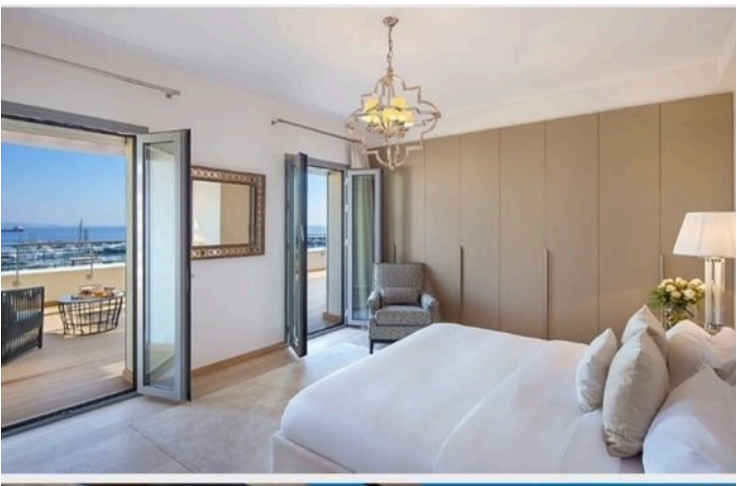
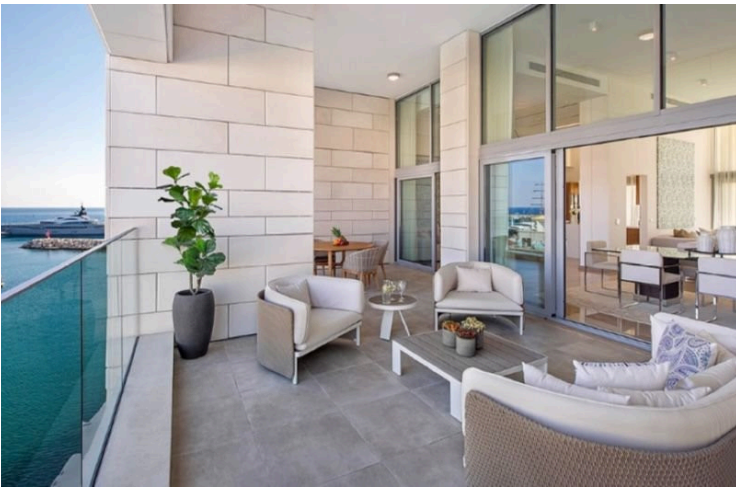
174622

FOUR BEDROOM DUPLEX LUXURY APARTMENT WITH STUNNING VIEWS IN LIMASSOL MARINA

📍 Limassol - Marina, Limassol

€7,200,000 +VAT





Overview

Specifications

Bedrooms



4

Covered

236 m²

Type

Apartment

Status

Key ready

Year of construction

2021

Energy efficiency rating

A

Description

Four bedroom duplex apartment on 3rd and 4th floor, located in Limassol Marina, just a few meters from a private sandy beach and has incomparable views of the harbor and city. The eastern part of the artificial island is framed by marinas for yachts, and the owners of the apartments retain the priority right to purchase them.

Features:

It has 92m² covered veranda with pool spa and is located within walking distance of luxury boutiques, shops, restaurants and bars, recreation areas and cultural sites. The living dining kitchen and bathroom areas are from marble, the verandas are from ceramic tiles, the bedrooms have parquet floors, the entrance door of the apartment is security metal door, has double glazing windows, pressurized system and video phone in the main entrance. The kitchen is pre-fitted with ceramic hobs, refrigerator, electric oven, extractor hood, microwave oven, washing machine, dishwasher and tumble dryer.

In addition, it has spotlights in the bathroom, WIFI will be supplied and installed, has air conditioning units and underfloor heating and heated towel rails. The apartment has sea view and also city view.

Marina services and facilities

- Monitoring VHF Channel 12
- Stable power provision up to 630 amps, 415v at 50Hz
- Fresh water
- 24-hour berthing assistance
- 24-hour security and CCTV
- Concierge services
- High speed fibre internet, telephone and IPTV
- WI-FI access
- Fuel station and bunker service
- Grey and black water pump-out system



Floor plans

Bedrooms	4
Floor	3-4
Pool	COMMUNAL
Covered Area	230m²
Covered Terraces	92m²
Total Covered Area	328m²
Common Area	33m²
Sundeck	163m²
Pool Spa	YES



Additional information

Facilities

Aircondition, Split system

Gym

Parking, Covered

Spa

Elevator

Heating, Underfloor

Pool, Communal

Storage

Gated complex

Landscaped garden

Solar photovoltaic panels

Features

24-hour security

Ceramic tiles

Easy access to highway

Heart of city center

Marble flooring

Panoramic view

Rental potential

Veranda

Bright

City view

Easy access to main roads

Internal stairs

Modern design

Parquet flooring

Sea front

Walking distance to beach

CCTV

Double glazing

En suite bathroom

Luxury specifications

Near amenities


Quiet area

Sea view

Contact us



Office Properties

 (+357) 25871010

 info@vivorealty.com.cy

