



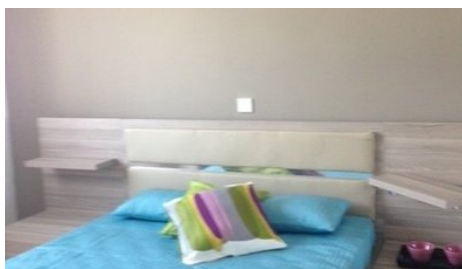
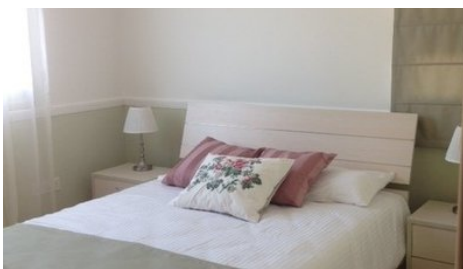
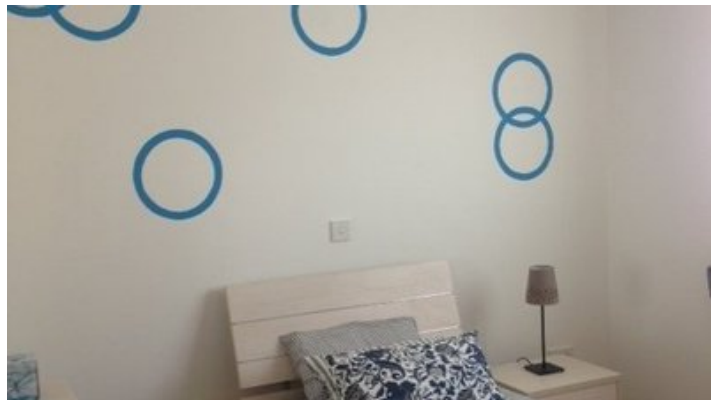
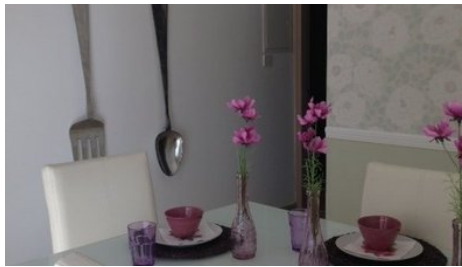
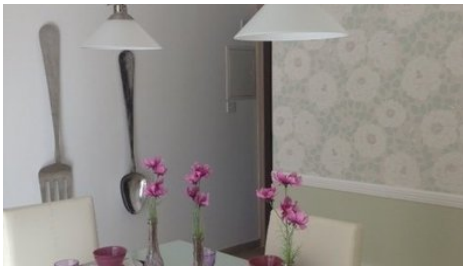
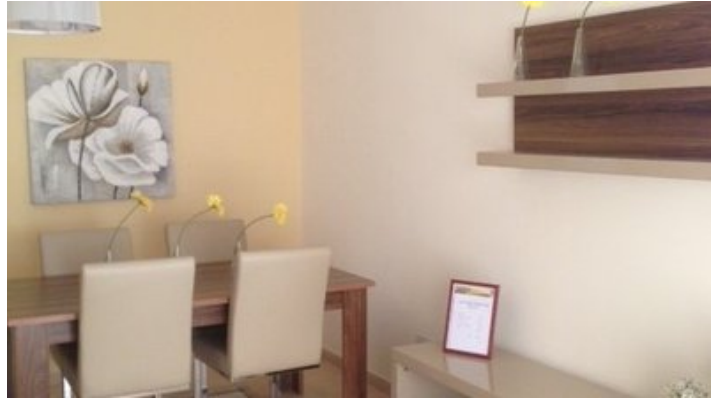
**VIVO**  
REALTY



## GROUND FLOOR 3 BEDROOM APARTMENT IN PISSOURI VILLAGE

 [Limassol, Pissouri](#)

174122



<b>Price</b>	€138,000	<b>Type</b>	Apartment
<b>Bedrooms</b>	3	<b>Covered</b>	115.8 m <sup>2</sup>
<b>Plot</b>	217 m <sup>2</sup>	<b>Status</b>	Key ready
<b>Area</b>	Limassol, Pissouri		

---

## Description

Ground floor 3 bedroom apartment, is located in Pissouri village halfway between Limassol and Paphos, with easy access to the motorway, the International airport of Paphos and the nearby golf courses which are only 6 Km away from Pissouri.

It has a parking place, laminated wooden floors in the bedrooms, communal swimming pool, quality ceramic tiles, solar heating and provision for air condition units.

A unique investment opportunity, with its distinctive Mediterranean architecture and design in lush green surroundings offers a truly unique living experience.



### Office Properties

Office Administrator

✉ info@vivorealty.com.cy  
☎ (+357) 25871010

## Facilities

Pool, Private

---

## Features

Near amenities