

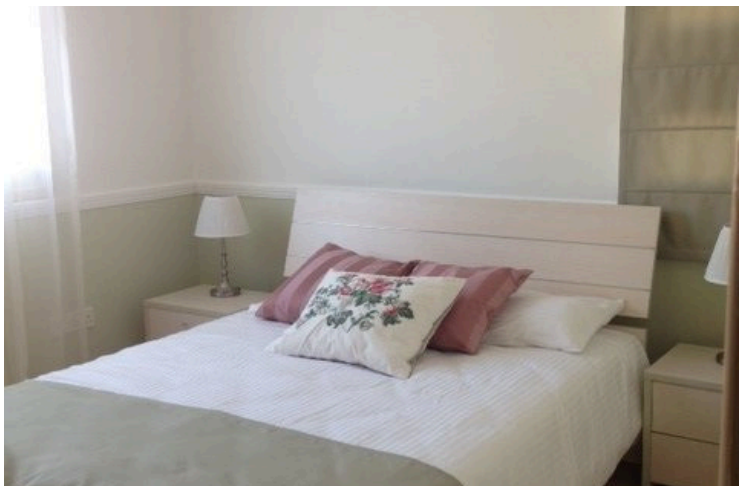
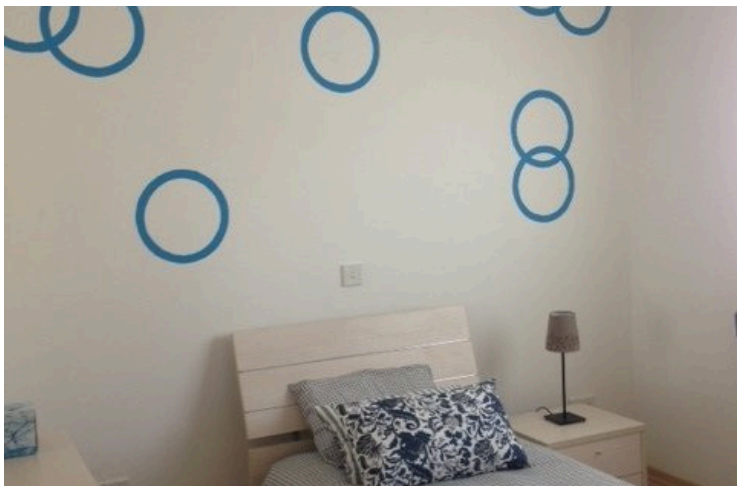
174121

THREE BEDROOM APARTMENT IN PISSOURI VILLAGE

 Pissouri, Limassol

€132,000





Overview

Specifications

Bedrooms



Covered

 126 m²

Type

Apartment

Status

Key ready

Description

Three bedroom apartment is located in Pissouri village halfway between Limassol and Paphos, with easy access to the motorway, the International airport of Paphos and the nearby golf courses which are only 6 Km away from Pissouri.

This exceptional three bedroom apartment, is truly a unique investment opportunity, offering residents the perfect blend of country living and a luxury Mediterranean lifestyle and feature distinctive Mediterranean architecture, and is situated in lush green surroundings, boasting a communal swimming pool for all residents.

Additional information

Facilities

Pool, Communal

Features

Investment opportunity

Near amenities

Contact us



Office Properties

 (+357) 25871010

 info@vivorealty.com.cy