

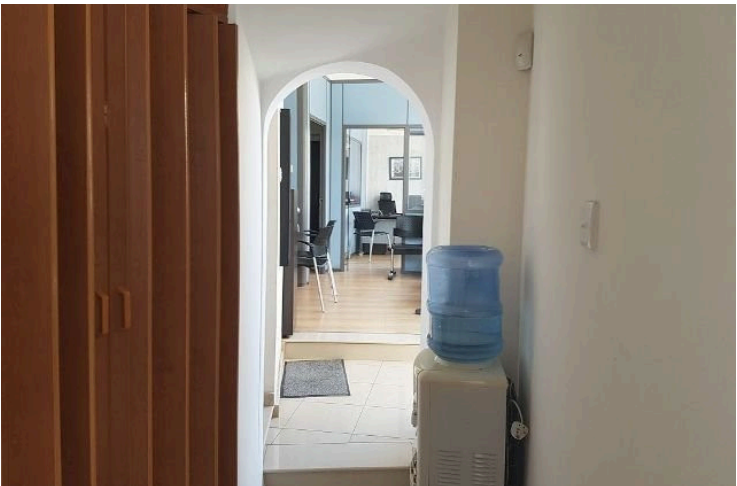
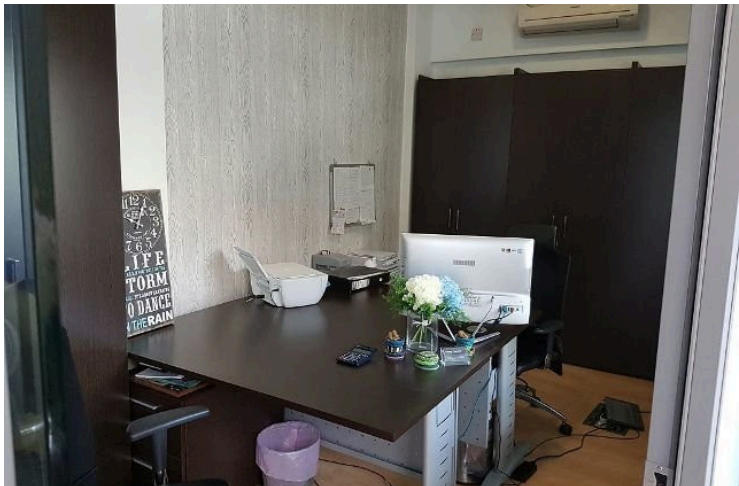
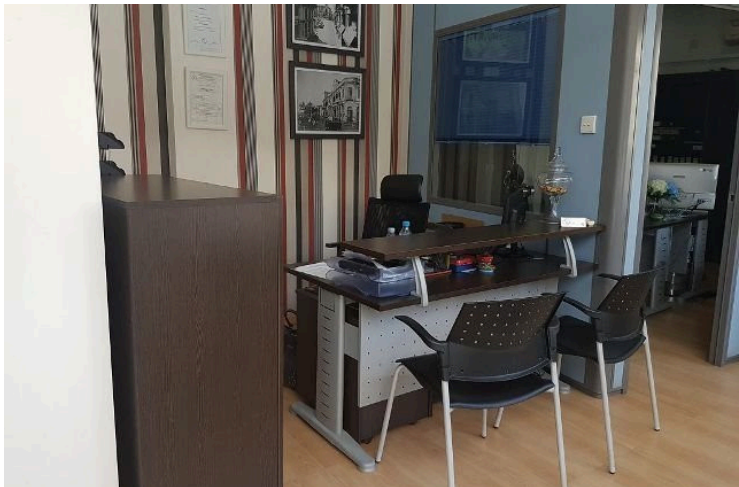
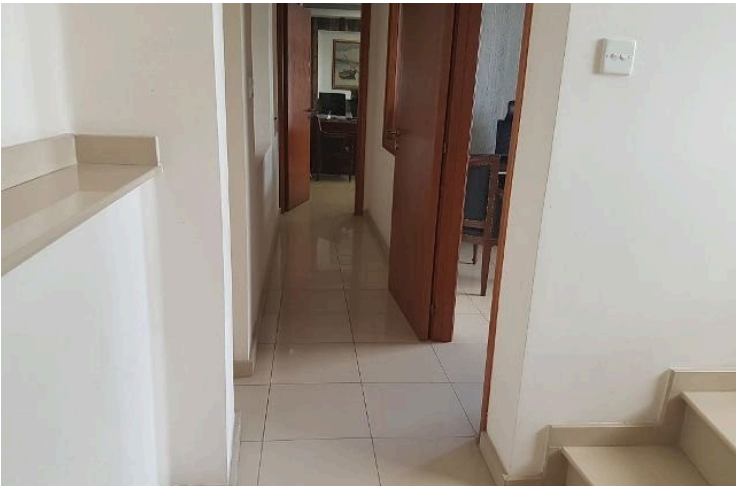
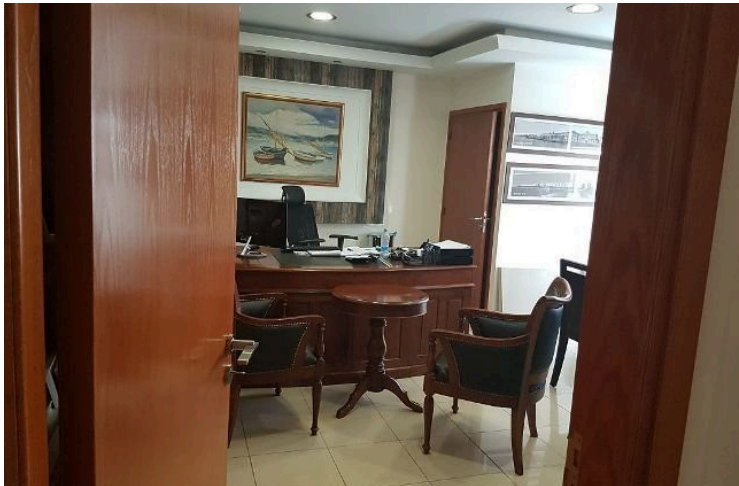
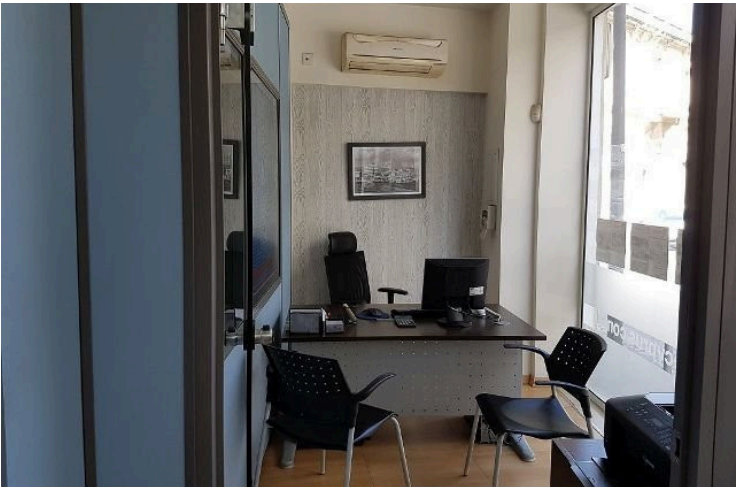
172896

COMMERCIAL BUILDING IN THE HEART OF LIMASSOL AND NEAR TO SEA

📍 Limassol, City Center, Limassol

€750,000






Overview

Specifications

Covered

 175 m²

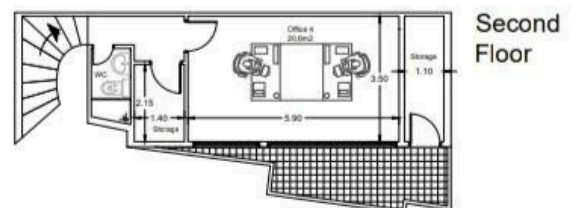
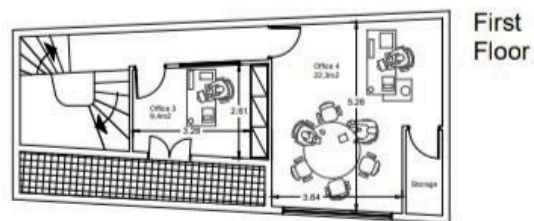
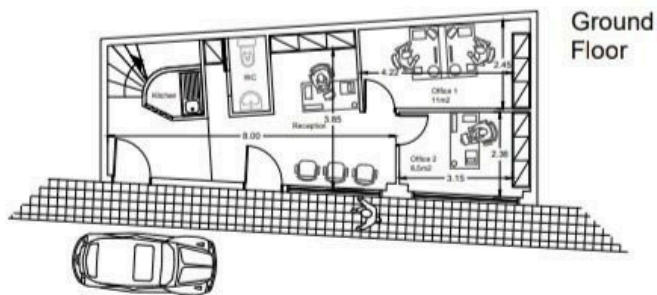
Type	Commercial Building	Status	Resale
Plot	64 m ²	Energy efficiency rating	

Description

Resale Commercial Building of 175 sqm internal area located in the heart of Limassol city on a 3 floor building. The building is in an excellent internal and external condition. The ground floor is consisting of a reception area, wc, kitchen, 2 Offices. On the 1st floor there are another 2 offices and the one of those can be used as a conference area and on the 2nd floor there is a 4th office between 2 store rooms and a second wc.



Floor plans



Scale 1:100



Additional information

Facilities

Aircondition, Split system

Heating, Central

Features

Alarm system

City view

Double glazing

Easy access to highway

Easy access to main roads

Heart of city center

Internal stairs

Kitchenette

Main road


Near amenities

Veranda

Contact us



Office Properties

 (+357) 25871010

 info@vivorealty.com.cy

