

15182233

UNDER CONSTRUCTION 2 BEDROOM APARTMENT IN AG. ATHANASIOS

 Agios Athanasios, Limassol

€390,000 +VAT





Overview

Specifications

Bedrooms

 2


Bathrooms

 1

Covered

 83 m²

Type	Apartment
Showers	1
Toilets	2
Status	Under construction
Year of construction	2027

Furnished	Unfurnished
Structure	Concrete
Facade	Concrete
Energy efficiency rating	 A+

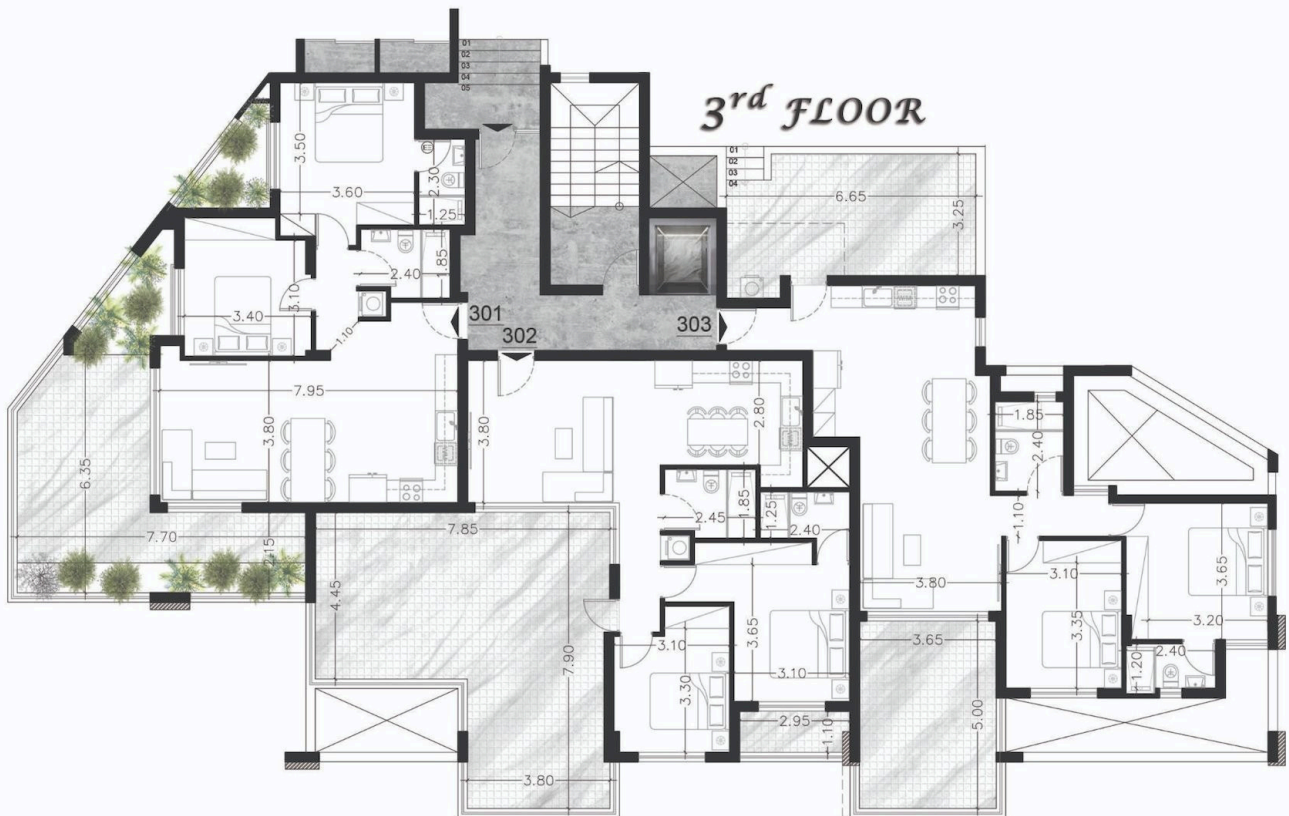
Description

Spacious high quality, high standard under construction two bedroom flat with modern architecture located in a cul de sac of Agios Athanasios Limassol.

Quiet neighborhood with new developments and easy access to the highway and town. Spacious areas, open plan kitchen with dining area, living room with covered veranda and greenery, large bedrooms (one the master with en suite) and family bathroom. Provision for a/c units, underfloor heating & electric shutters. Electric gate entrance, double windows, granite kitchen top, covered parking, storage space and more. Quality is guaranteed.



3rd FLOOR



Additional information

Facilities

Aircondition, Provision

Heating, Underfloor

Solar water heater

Elevator

Parking, Covered

Storage

Gated complex

Solar photovoltaic panels

Features

Balcony

Bright

Combined kitchen and dining area

Double glazing

Elevated

Entrance gate, automated

Fly screens

High ceilings

Modern design

Near amenities

Painted

Pressurized water system

Shower

Thermal insulation

Bath

Ceramic tiles

Connected to electric mains

Easy access to highway

En suite shower

Fireproof entrance doors

Granite countertops

Internet

Mountain view

Next to green area

Panoramic view

Quiet area

Shutters, electric (provision)

Veranda

Bicycle parking

City view

Cul de sac

Easy access to main roads

Energy efficient doors/windows

Fitted wardrobes

Handicap accessible

Luxury specifications

Municipal water/sewage

Open plan

Pipe-in-pipe plumbing system


Rental potential

Spacious rooms

Contact us



Steve Stylianou

 (+357) 99524651

 sstylianou@vivorealty.com.cy

