

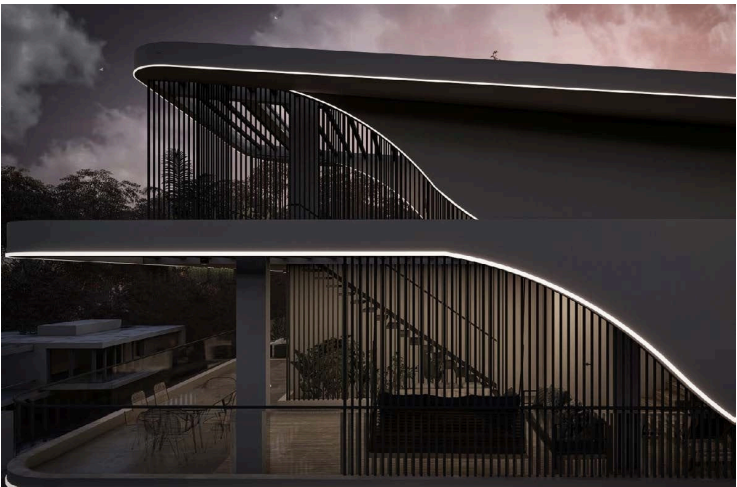
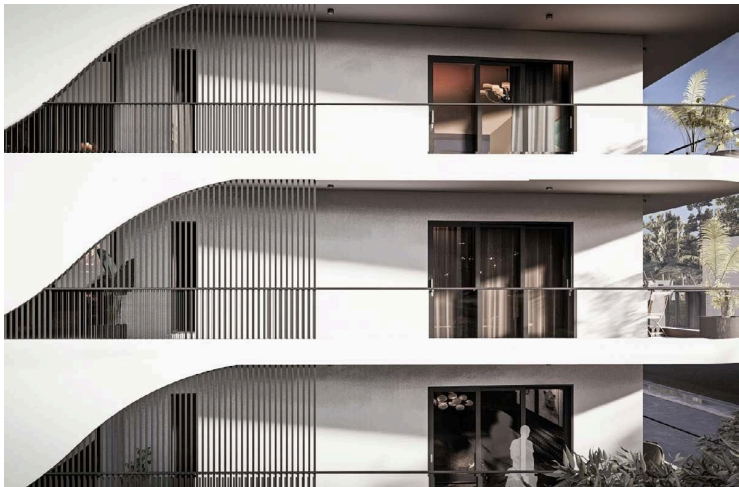
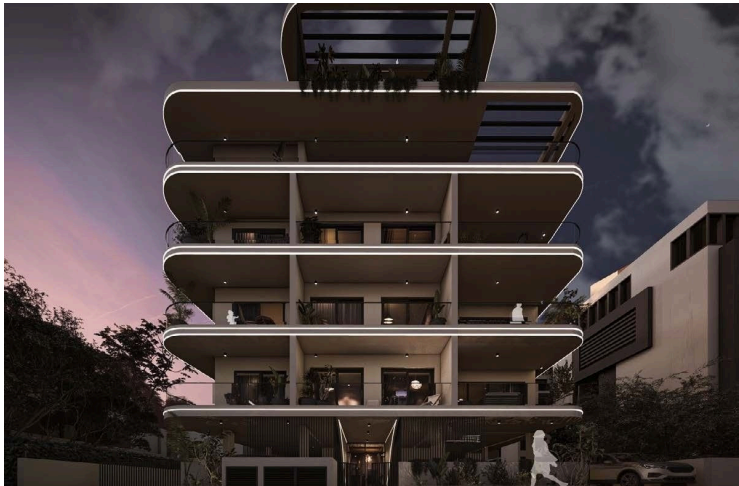
15182155

MODERN 2 BEDROOM APARTMENT IN KATHOLIKI

 Katholiki, Limassol

€350,000 +VAT





Overview

Specifications

Bedrooms

 2


Bathrooms

 1

Covered

 80 m²

Type	Apartment
Showers	1
Toilets	2
Status	Under construction

Year of construction	2025
Furnished	Optional furnished
Structure	Concrete
Energy efficiency rating	 A

Description

Stunning two bedroom apartment in Katholiki, Limassol a vibrant neighborhood known for it's rich culture and convenient access to amenities. This brand-new property, set to be completed in 2026, offers an impressive internal space of 80 m², perfect for modern living.

This flat features an open plan kitchen with living room, two well-sized bedrooms, guest w/c, main bathroom and large verandas. The apartment boasts energy efficiency rating A, ensuring a sustainable living environment with modern comforts.

The location in Katholiki is ideal for those who appreciate city life. You'll be just moments away from local shops, cafes, and parks, providing everything you need within easy reach.

Additionally, the option to furnish the apartment is available, allowing you to personalize your new home. This penthouse represents a remarkable opportunity for anyone looking to invest in modern living.

This listing is proudly presented by Vivo Realty, your trusted partner in finding the perfect home. Don't miss out on this incredible opportunity!



Floor plans



Additional information

Facilities

Aircondition, Provision

Solar photovoltaic panels

Elevator

Solar water heater

Parking, Covered

Storage

Features

Alarm system

Balcony, front

Breakfast bar

City view

Double glazing

Entrance gate, automated

Heart of city center

Luxury specifications

Near amenities

Open plan

Rental potential

Veranda, large

Balcony

Bar

Bright

Combined kitchen and dining area

Easy access to main roads

Fitted wardrobes

Internet

Modern design

Near bus route

Painted

Shower

Balcony, back

Barbeque

Ceramic tiles

Connected to electric mains

Energy efficient doors/windows

Guest WC

Laminate flooring

Municipal water/sewage

Next to green area


Quiet area

Thermal insulation

Contact us



Steve Stylianou

 (+357) 99524651

 ssstylianou@vivorealty.com.cy

