

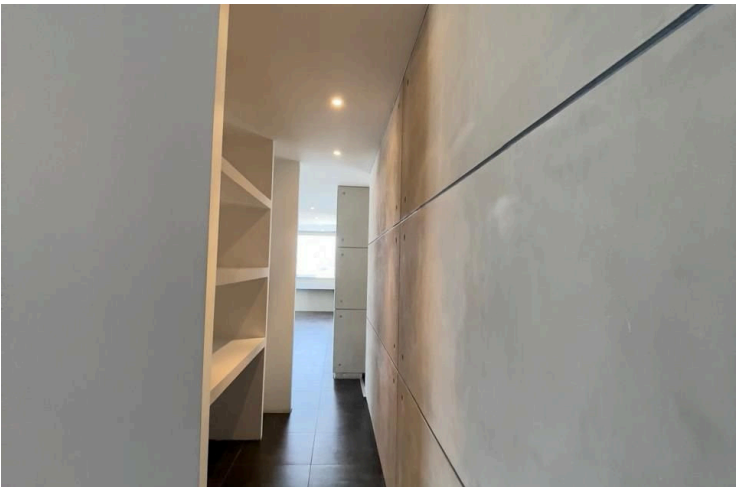
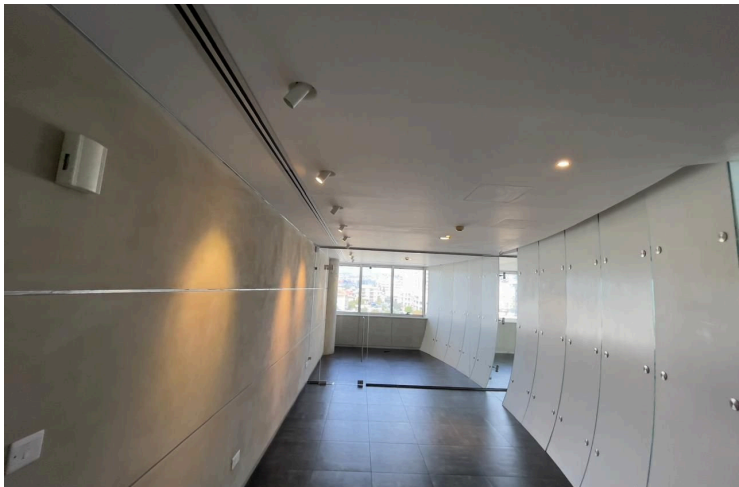
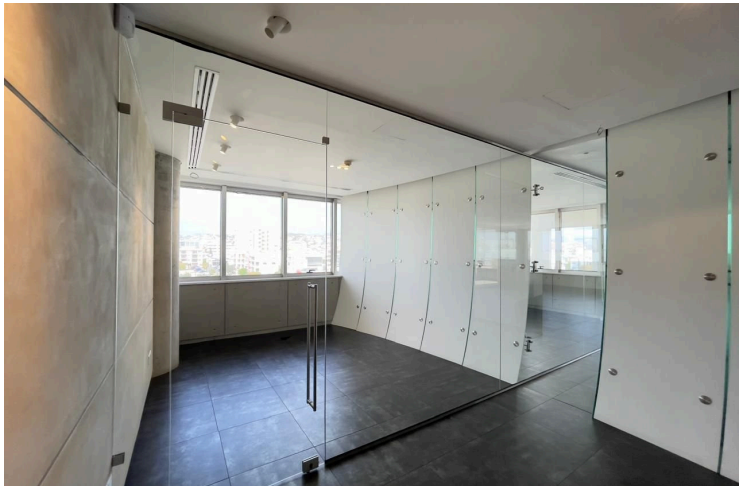
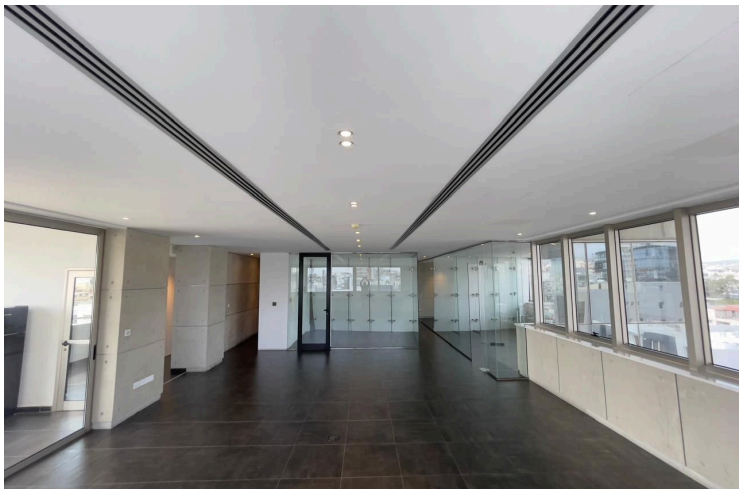
15182049

# MODERN OFFICE FOR RENT IN CENTRAL LIMASSOL

 Petrou & Pavlou, Limassol

**€7,000** /month





# Overview

## Specifications

Covered

 **156 m<sup>2</sup>**

Type **Office**

Toilets **2**

Status **Key ready**

Structure **Concrete**

Energy efficiency rating  **Exempt**

## Description

Luxury office located on Limassol's famous Spyrou Kyprianou Avenue with easy access to all major roads and all amenities within walking distance.

Modern design building in excellent condition with high tech interior design, security entry system and secured underground parking with two entries.

The office itself is located on the top floor giving you nice views all around and bright areas. Carefully designed giving you full use of all areas, raised floor with porcelain ceramics, VRV system with electronic panels, high speed network, server room, 3-phase electricity, LED fittings & designer spot lights, two w/c's , kitchen area and outdoor covered veranda.



# Additional information

## Facilities

Aircondition, Central system

Elevator

Parking, Underground

Solar water heater

## Features

Alarm system

Bicycle parking

Business facilities

CCTV

Ceramic tiles

City view

Closed offices

Conference hall

Connected to electric mains

Country view

Double glazing

Easy access to highway

Easy access to main roads

Energy efficient doors/windows

Excellent condition

Glass partitions

Handicap accessible

Heart of city center

Internal stairs

Internet

Kitchen

Lobby

Luxury specifications

Main road

Meeting room

Mountain view

Municipal water/sewage

Near amenities

Near bus route

Near public transport

Raised floors

Reception

Server room

Structured cabling/wiring


Veranda

Wireless internet

## Contact us



**Steve Stylianou**

 (+357) 99524651

 sstylianou@vivorealty.com.cy

