



VIVO
REALTY



TOP FLOOR 2 BEDROOM APARTMENT IN NEAPOLIS LIMASSOL

 [Limassol, Neapolis](#)

15181176





Price	€610,000 +VAT	Type	Apartment
Bedrooms	2	Bathrooms	1
Covered	88 m ²	Covered veranda	21 m ²
Year of Construction	2024	Status	Under construction
Energy efficiency rating	A	Floor	Top floor / 4
Area	Limassol, Neapolis		

Description

High standard modern design top floor two bedroom apartment just two hundred meters from the beachfront in Neapoli, Limassol. Great location, within walking distance to all amenities such as schools, supermarkets, shops, cafes, restaurants, banks etc. Eight flats in total on four floors. Open plan kitchen with lounge/dining room, very large covered veranda, the two bedrooms with balcony, one of which the master bedroom with en-suite bathroom, guest w/c with shower, and a communal roof garden with swimming pool, barbeque area & extra shower room. Underfloor heating (electric), air conditioning, private covered parking, storage space, photovoltaic system and more.



Steve Stylianou
Property Consultant

✉ sstylianou@vivorealty.com.cy
☎ (+357) 99524651

Facilities

Aircondition, Split system

Parking, Covered

Elevator

Gated complex

Solar water heater

Heating, Underfloor

Pool, Communal

Storage

Outdoor shower

Solar photovoltaic panels

Features

Shower

Thermal insulation

Easy access to main roads

Combined kitchen and dining area

Municipal water/sewage

Balcony, back

Fitted wardrobes

Handicap Accessible

Painted

Open plan

Alarm system

Double glazing

Veranda, large

En suite Bathroom

Modern design

Near bus route

Internet

Roof Garden

Fire detector

Heart of city center

Bathroom underfloor heating

Connected to electric mains

Next to green area

Balcony, front

Entrance gate, automated

Pressurized water system

Bright

Bar

Laminate flooring

Guest WC

Rental Potential

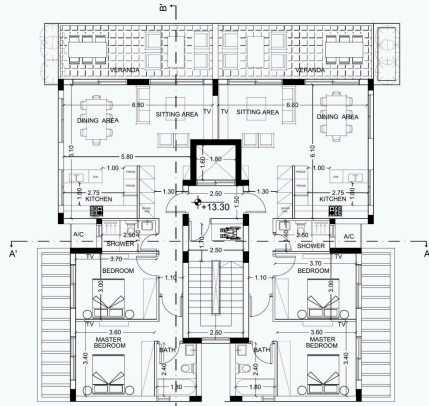
Luxury specifications

Walking distance to beach

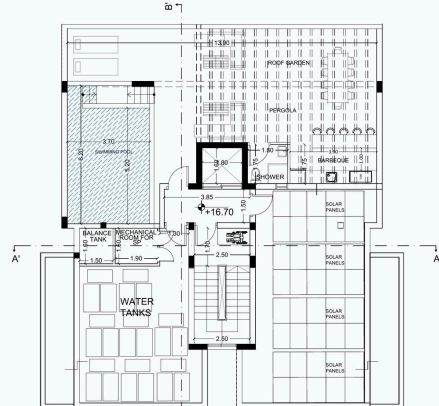
Near amenities

Barbeque

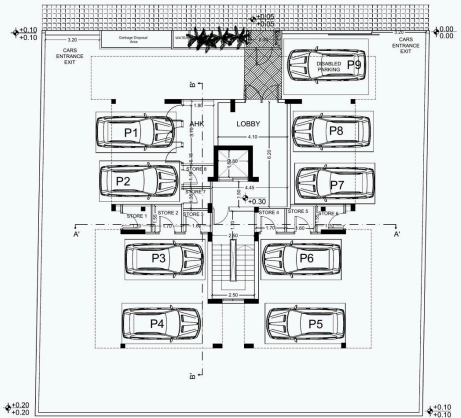
Floor plans



FOURTH FLOOR



ROOF PLAN



GROUND FLOOR