

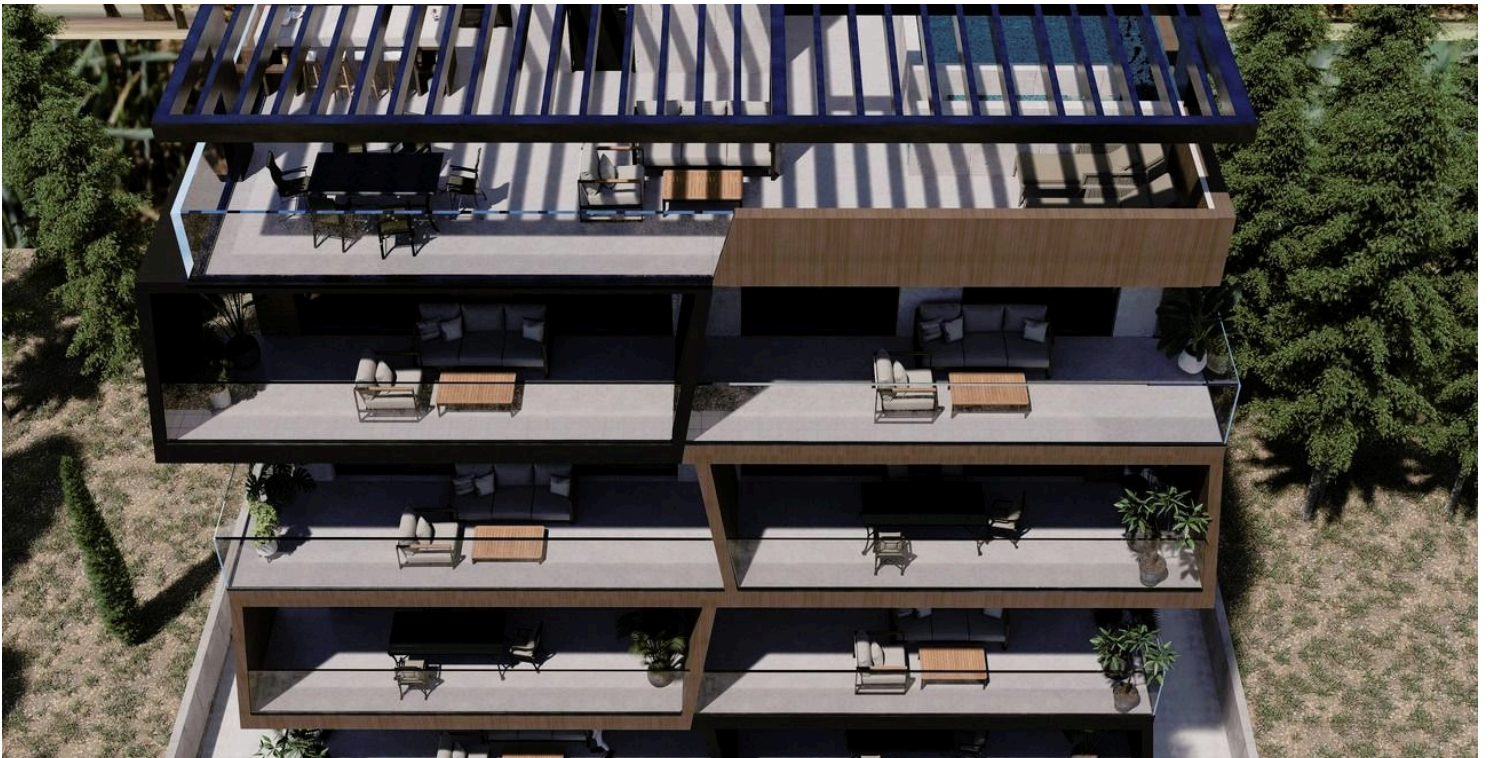
15181175

RESIDENTIAL PLOT WITH BUILDING LICENCE IN NEAPOLIS LIMASSOL

 Neapolis, Limassol

€1,350,000 +VAT





Overview

Specifications

Area

 521 m²

Type

Building Plot

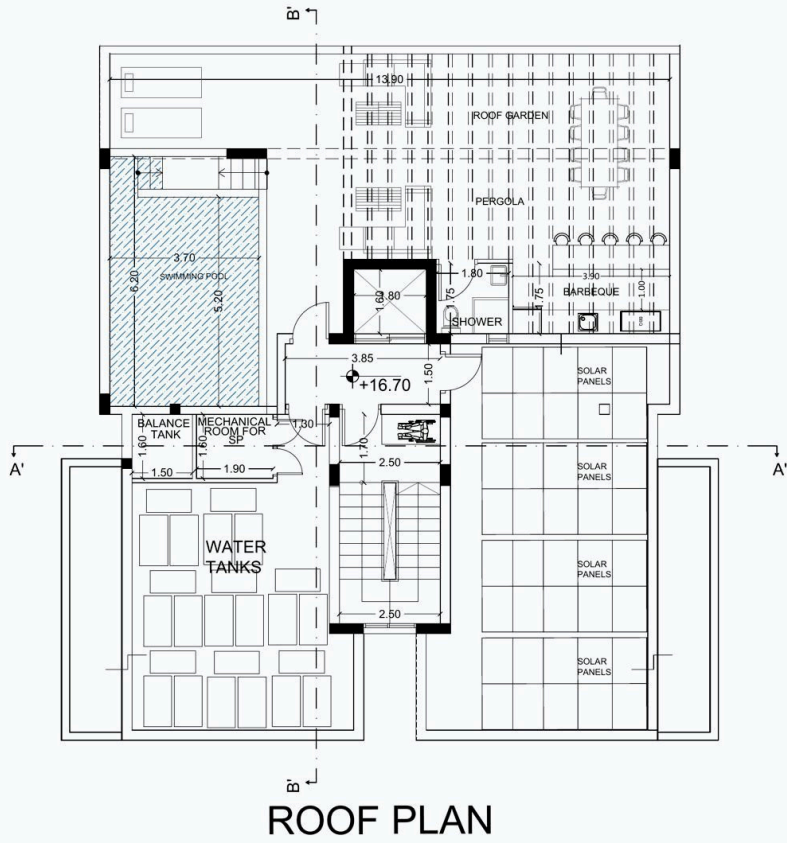
Description

High standard modern design apartment building just two hundred meters from the beachfront in Neapoli, Limassol with ready building permit. Great location, within walking distance to all amenities such as schools, supermarkets, shops, cafes, restaurants, banks etc. Eight two bedroom flats in total on four floors plus roof garden with common pool area.

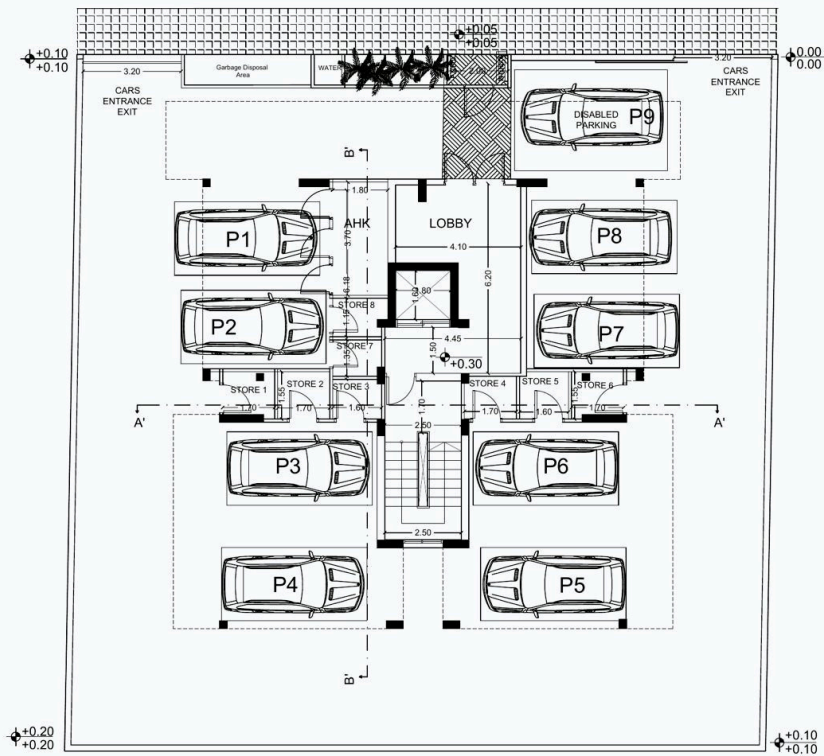
Plot size 521m2, all apartments have 88m2 covered areas plus verandas.



Floor plans



ROOF PLAN



GROUND FLOOR



Additional information

Features

Connected to electric mains

Municipal water/sewage

Next to green area

Easy access to main roads

Near amenities

Walking distance to beach

Heart of city center

Near bus route

Contact us



Steve Stylianou

 (+357) 99524651

 sstylianou@vivorealty.com.cy

