

15180413

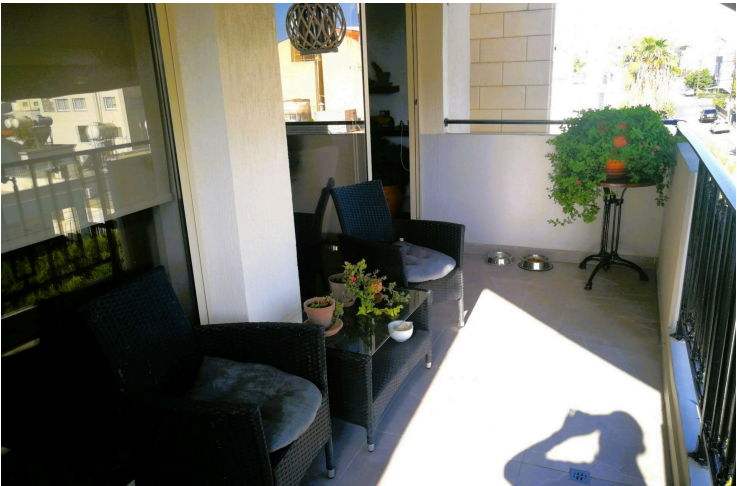
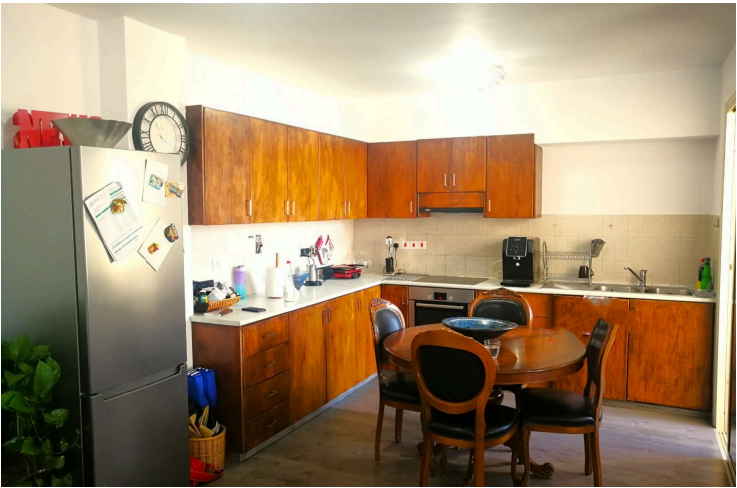
# KEY READY 2 BEDROOM APARTMENT IN PETROU & PAVLOU LIMASSOL

 Petrou & Pavlou, Limassol

€280,000







# Overview

## Specifications

Bedrooms

 2

Bathrooms

 1

Covered

 89 m<sup>2</sup>

Type **Apartment**

Toilets **1**

Status **Key ready**

Year of construction **2004**

Furnished **Partially furnished**

Structure **Concrete**

## Description

Key ready two bedroom apartment located in a quiet neighborhood of Petrou & Pavlou Limassol with easy access to all main roads and walking distance to all amenities and parks.

Building is very well maintained and has a total of just twelve units.

Spacious living/dining area with a good sized veranda with open views, kitchen with lots of cabinets and small veranda, two very large bedrooms and bathroom. A/c units in all areas, store room and covered parking. Title deeds in hand.

# Additional information

## Facilities

Aircondition, Split system

Elevator

Parking, Covered

Solar water heater

Storage

## Features

Balcony

Bicycle parking

Bright

Ceramic tiles

City view

Combined kitchen and dining area

Connected to electric mains

Double glazing

Easy access to highway

Easy access to main roads

Elevated

Fitted wardrobes

Internet

Kitchen appliances

Municipal water/sewage

Near amenities

Near bus route

Next to green area

Open plan

Painted

Quiet area

Rental potential


Shower

Veranda

## Contact us



**Steve Stylianou**

 (+357) 99524651

 sstylianou@vivorealty.com.cy