

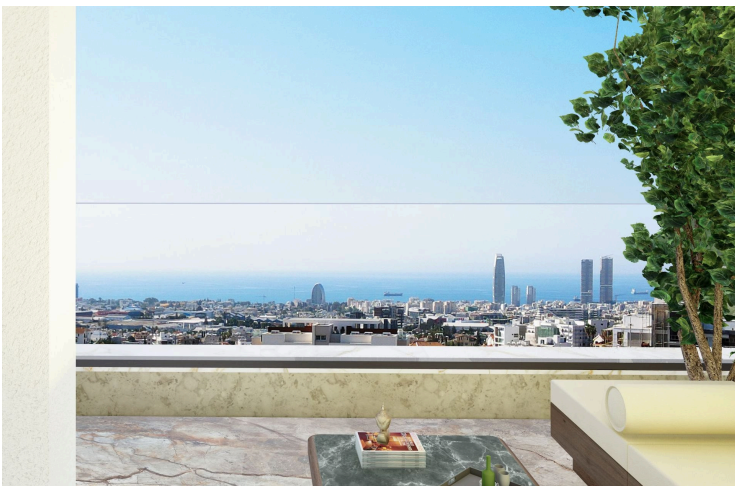
15180303

TOP FLOOR 3 BEDROOM APARTMENT + ROOF GARDEN IN PANTHEA LIMASSOL

 Panthea, Limassol

€640,000 +VAT ~~€790,000~~





Overview

Specifications

Bedrooms

 3


Bathrooms

 1

Covered

 112 m²

Type	Apartment
Showers	2
Toilets	4
Status	Under construction

Year of construction	2024
Furnished	Unfurnished
Structure	Concrete
Energy efficiency rating	 A

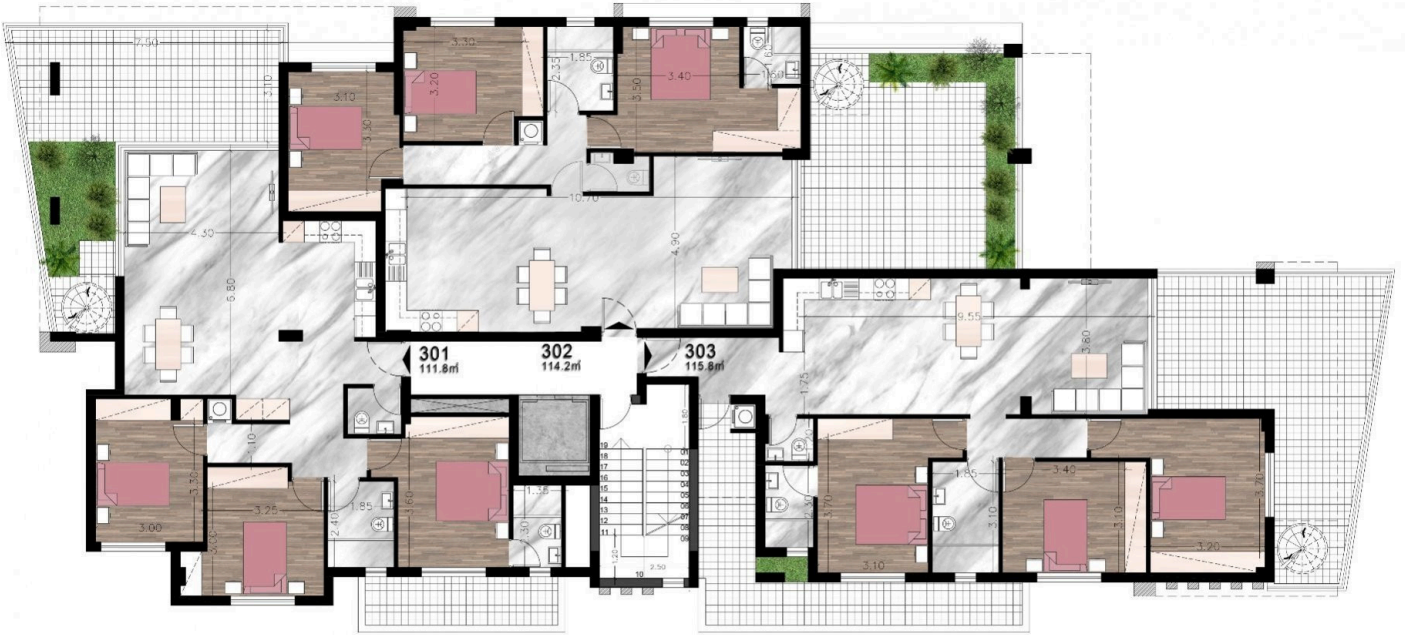
Description

Spacious high quality, high standard under construction top floor three bedroom flat + roof garden with modern architecture located in a quiet area of Panthea Limassol with sea views. Quiet neighborhood with new developments and easy access to the highway and town. Spacious open plan kitchen combined with living/dining area, guest w/c, large covered & uncovered veranda with sea views, the three bedrooms (one with en-suite shower) washing machine closet and family bathroom. Spiral staircase leads to the private roof garden with extra w/c and lots of space for an extra room.

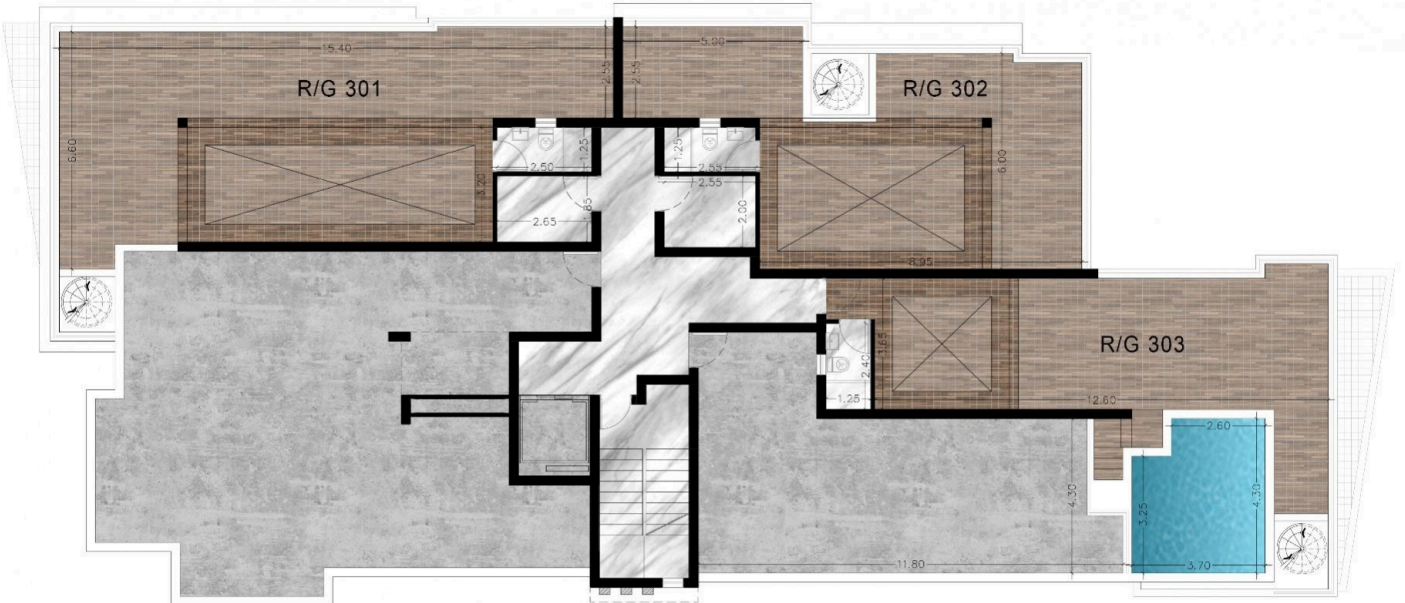
Provision for A/C & Heating, electric gate entrance, double windows, granite kitchen top, covered parking and storage space. Quality is guaranteed.



Floor plans



3rd FLOOR PLAN



ROOF GARDENS PLAN



Additional information

Facilities

Aircondition, Provision

Parking, Covered

Storage

Elevator

Solar photovoltaic panels,
provision

Heating, Provision

Solar water heater

Features

Balcony

Ceramic tiles

Double glazing

Elevated

Handicap accessible

Municipal water/sewage

Next to green area

Roof garden

Thermal insulation

Bath

Combined kitchen and dining
area

Easy access to highway

Entrance gate, automated

Internet

Near amenities

Open plan

Sea view

Veranda

Bright

Connected to electric mains

Easy access to main roads

Fitted wardrobes

Modern design

Near bus route


Quiet area

Shower

Contact us



Steve Stylianou

 (+357) 99524651

 sstylianou@vivorealty.com.cy

