

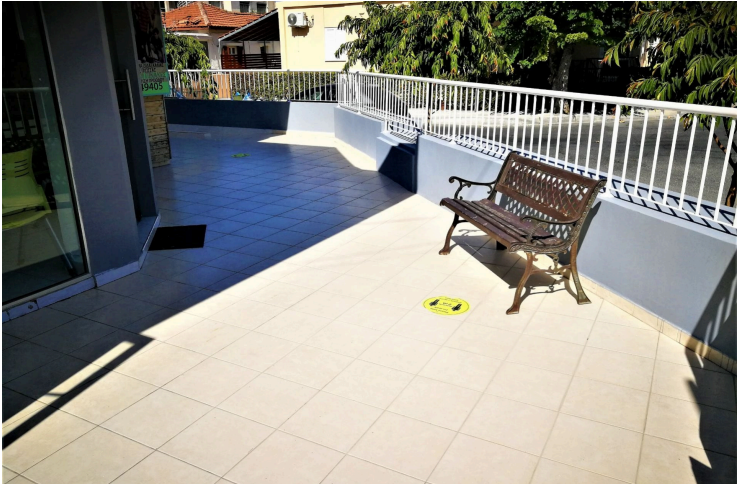
15179229

SEMI DETACHED HOUSE IN CHALKOUTSA LIMASSOL

📍 Chalkoutsa, Limassol

€300,000





Overview

Specifications

Bedrooms

 3

Bathrooms

 1

Covered

 100 m²

Type	Semi-Detached Villa
Showers	1
Toilets	2
Plot	208 m²

Status	Resale
Furnished	Unfurnished
Structure	Concrete

Description

Corner semi detached house located in the center of Limassol on a residential & commercial road with permission to build up to three floors.

The property is currently used for commercial purposes and will need minor adjustments to be transferred into a house.

Bright areas, large separate kitchen with access to a side veranda and parking area, three separate rooms, two w/c's and a large front veranda.

Additional information

Facilities

Aircondition, Split system

Parking, Uncovered

Solar water heater

Storage

Features

Alarm system

Balcony, front

Bicycle parking

Bright

Ceramic tiles

Connected to electric mains

Corner

Double glazing

Easy access to highway

Easy access to main roads

Fire detector

Fitted wardrobes

Guest WC

Handicap accessible

Heart of city center

Internet

Investment opportunity

Municipal water/sewage

Near amenities

Near bus route

Next to green area

Office

Rental potential

Shower


Shutters

Veranda, large

Contact us



Steve Stylianou

 (+357) 99524651

 sstylianou@vivorealty.com.cy