

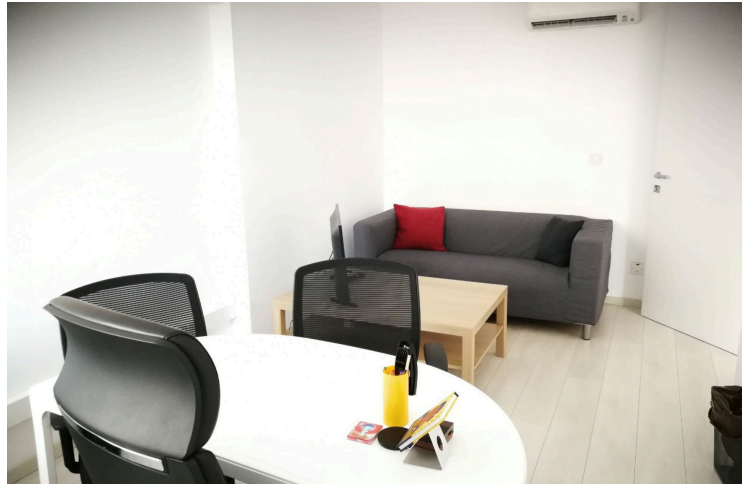
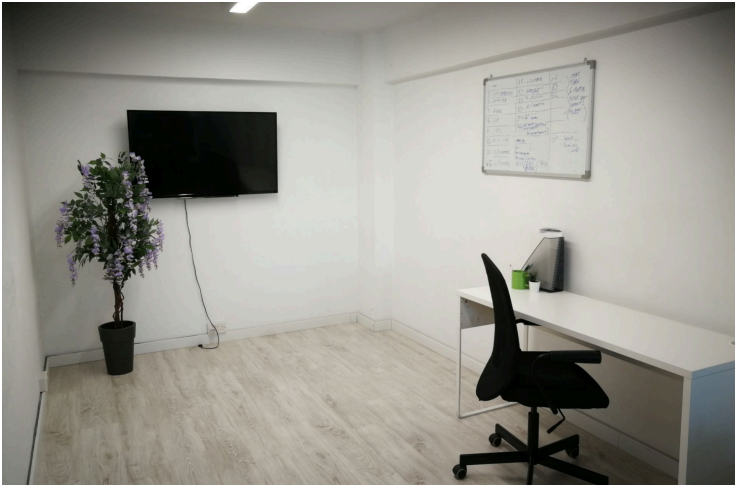
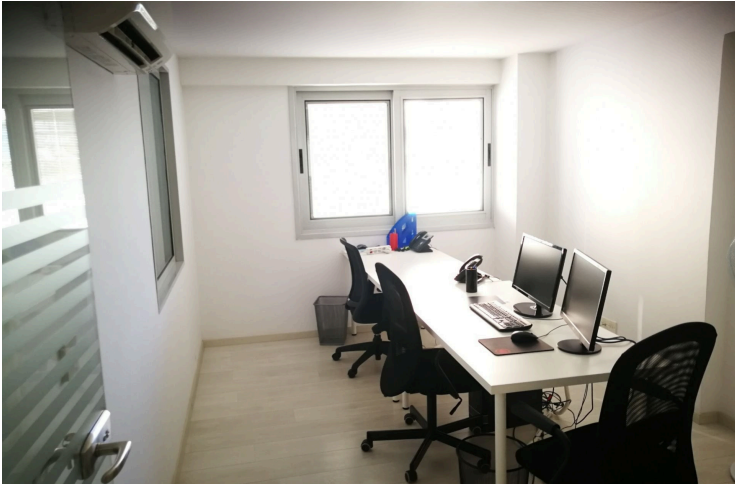
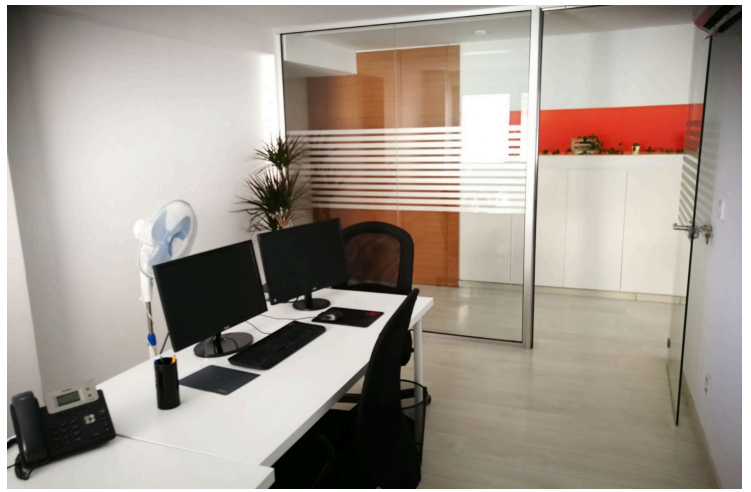
15178725

# SEAFRONT OFFICE SPACE OF 138M2 IN OLD TOWN LIMASSOL

 Molos, Limassol

**€3,000** /month





# Overview

## Specifications

Covered

 **138 m<sup>2</sup>**

Type

**Office**

Energy efficiency rating

 **Exempt**

Status

**Key ready**

## Description

The office is located on a commercial building located in a prime location on the famous waterfront.

The seafront is considered as one of the most commercial roads in Limassol with numerous retail and commercial buildings and establishments.

Great accessibility towards the city center, Limassol Marina, and the old port. The surrounding area has experienced substantial development over the past year and is the place to be.

Glass separated offices, two w/c's, kitchen area, six office rooms.

This office has covered areas of 137m2.





# Additional information

## Facilities

Aircondition, Split system

Elevator

## Features

Closed offices

Connected to electric mains

Double glazing

Easy access to main roads

Excellent condition

Glass partitions

Heart of city center

Internet

Kitchenette

Laminate flooring

Lounge area

Main road

Meeting room


Municipal water/sewage

Near public transport

## Contact us



**Steve Stylianou**

 (+357) 99524651

 [sstylianou@vivorealty.com.cy](mailto:sstylianou@vivorealty.com.cy)

