



**VIVO**  
REALTY



## UNDER CONSTRUCTION 2 BEDROOM FLAT IN KATHOLIKI

 [Limassol, Katholiki](#)

15177054



<b>Price</b>	€220,000 +VAT	<b>Type</b>	Apartment
<b>Bedrooms</b>	2	<b>Bathrooms</b>	1
<b>Covered</b>	86 m <sup>2</sup>	<b>Covered veranda</b>	18 m <sup>2</sup>
<b>Year of Construction</b>	2021	<b>Status</b>	Under construction
<b>Energy efficiency rating</b>	A	<b>Floor</b>	3 / 4
<b>Area</b>	Limassol, Katholiki		

## Description

Under construction 2 bedroom apartment located in the sought after area of Katholiki Limassol, within walking distance to all amenities and right next to the Garyllis River linear park which leads all the way to the Limassol Marina in just a couple minutes.

The flat is located on the first floor of a four storey building with nine flats in total. Separate kitchen with dining area, separate sitting area which leads to a large covered veranda the family bathroom and the two bedrooms of which one the master with en-suite. Electric shutters in the bedrooms, installation of photovoltaic system on the roof, provision for A/C & C/H, covered parking and store room. Energy efficiency certificate A.



### Steve Stylianou

Property Consultant

✉ sstylianou@vivorealty.com.cy

☎ (+357) 99524651

## Facilities

Aircondition, Provision

Parking, Covered

Storage

Heating, Provision

Elevator

Solar photovoltaic panels

---

## Features

Bath

Sound insulation

Easy access to main roads

Connected to electric mains

Next to green area

Fitted wardrobes

Shutters, electric

Bright

Ceramic tiles

Laminate flooring

Veranda, front

Quiet Area

En suite Shower

Near bus route

Internet

Bicycle parking

Thermal insulation

Combined kitchen and dining area

Municipal water/sewage

Balcony

Entrance gate, automated

Handicap Accessible

Open plan

Alarm system, Provision

Double glazing

Veranda

Rental Potential

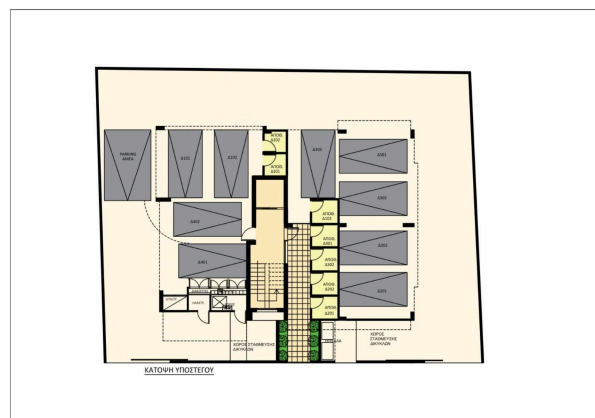
Modern design

Near amenities

## Floor plans



KATOPI 1ΟΥ ΟΡΟΦΟΥ



KATOPI 2ΟΥ ΟΡΟΦΟΥ