

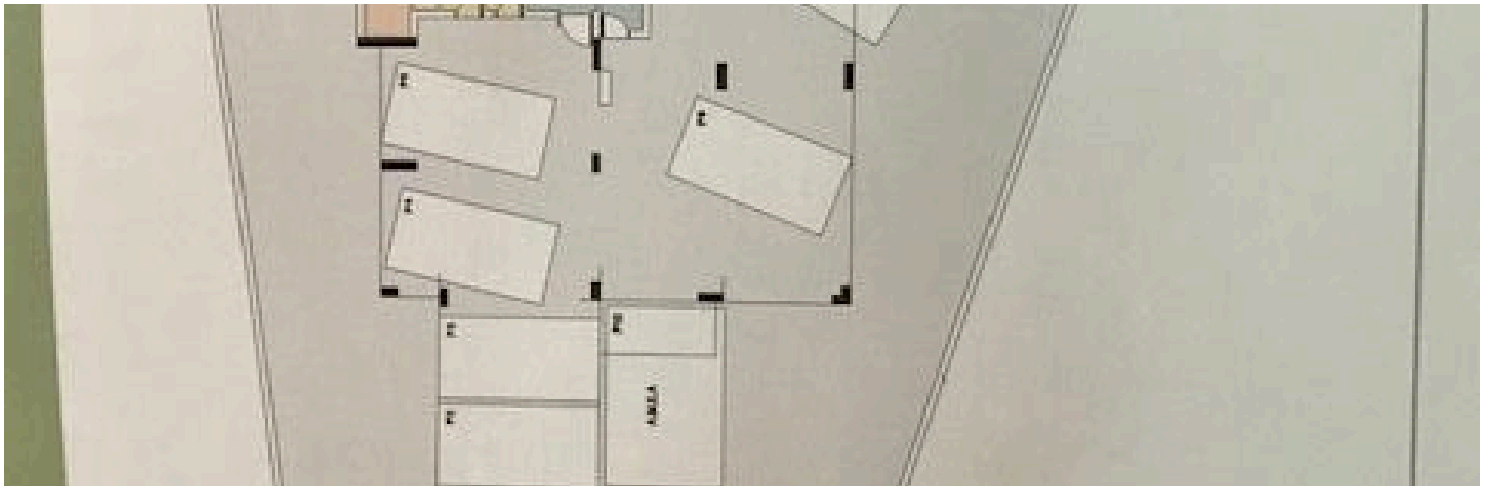
15176539

2 BEDROOM FLAT IN EPISKOPI LIMASSOL

 Episkopi, Limassol

€185,000 +VAT





Overview

Specifications

Bedrooms

 2


Bathrooms

 1

Covered

 91 m²

| | |
|----------------------|--------------------|
| Type | Apartment |
| Toilets | 2 |
| Status | Under construction |
| Year of construction | 2022 |

| | |
|--------------------------|---|
| Furnished | Unfurnished |
| Structure | Concrete |
| Energy efficiency rating |  A |

Description

Under construction very spacious two bedroom apartment located in a very quiet area of Episkopi Limassol surrounded by fields and greenery. Open plan design with combined kitchen/dining/living area and big covered veranda. Guest w/c, family bathroom and two large bedrooms. Nice design, quality material, provision for a/c, covered parking & storage space. Energy certificate A+.

Additional information

Facilities

Aircondition, Provision

Parking, Covered

Elevator

Solar photovoltaic panels
(provision)

Heating, Provision

Storage

Features

Balcony

Connected to electric mains

Easy access to highway

Guest WC

Municipal water/sewage

Open plan

Veranda

Bright

Country view

Fitted wardrobes

Internet

Near amenities

Quiet area

Combined kitchen and dining area

Double glazing

Granite countertops

Modern design


Next to green area

Thermal insulation

Contact us



Steve Stylianou

 (+357) 99524651

 sstylianou@vivorealty.com.cy