



VIVO
REALTY

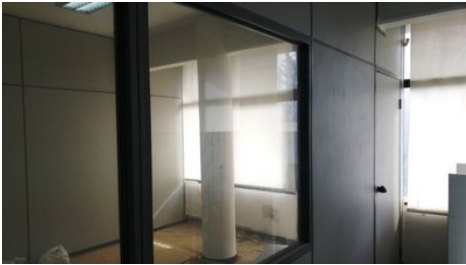


250 SQM OF PARTINIONED OFFICE CLOSE TO THE PORT

 [Limassol, Omonoia](#)

13168605





| | | | |
|---------------------|--------------------|---------------------------------|--------|
| Rent | €5,000 /month | Type | Office |
| Covered Area | 250 m ² | Energy efficiency rating | C |
| Area | Limassol, Omonoia | | |

Description

250 sqm of partitioned and renovated office close to the port. Has covered parking, air conditioning, separated offices, alarm system, internet, toilet and its close to all city amenities.



Office Properties

Office Administrator

✉ info@vivorealty.com.cy
☎ (+357) 25871010

Facilities

Aircondition, Split system

Parking, Uncovered

Features

Kitchenette

Alarm system

Fiber optics

Internet